

## Giant G1200 ROPS Cab



Note: Cab may be shown with optional accessories.

### Giant G1200-01 ROPS Cab.

This ROPS cab is designed and built to fit:

Giant G1200 tractor.

Designed and built by:

Tektite Manufacturing Inc:  
P.O. Box 639 - 427 Buffalo Street  
Winkler, MB, Canada  
R6W 4A8  
PH: 204-331-3463  
[parts@tektite.ca](mailto:parts@tektite.ca)

One-year standard product warranty provided by Tektite Manufacturing Inc.  
[www.tektite.ca](http://www.tektite.ca) / [www.tektitecabs.com](http://www.tektitecabs.com)



**DO NOT PROCEED FURTHER UNTIL YOU HAVE READ THE  
INFORMATION BELOW.**

- 1) Always wear personal protective equipment.
- 2) A minimum of two people is necessary to safely install the cab.
- 3) This ROPS cab is heavy. A lift assist device such as an overhead hoist or high lift forklift is required.
- 4) Ensure your work area is well ventilated. The installation requires the starting of the tractor which will produce dangerous carbon monoxide fumes.
- 5) Read through the entire installation manual first.
- 6) Follow the installation instructions in order.
- 7) Reading the operators manual prior to using the ROPS cab.

Tektite Manufacturing Incorporated thanks you for purchasing a Giant G1200 ROPS/FOPS cab! Tektite has worked very hard to design and build this ROPS product and we hope that it provides you with many years of protection.

Tektite products are designed to provide safe and dependable service during operation when they are properly maintained according to the instructions. Please read this installation manual carefully before installing and using this product.

The photos/illustrations provided in this manual may not provide all the detail needed and are for reference only.

All directions provided are from the reference point of the tractor seat facing the steering wheel. All left and right references are from this viewpoint.

For reference, please fill in the information below. This will assist your dealer in providing service for this product. It is advisable that this information be provided to your insurance company as well in the event that the tractor is lost or damaged.

Vehicle Model: \_\_\_\_\_

Tektite Serial Number: \_\_\_\_\_

Date of Purchase: \_\_\_\_\_

Dealer Name: \_\_\_\_\_



## Parts List Standard Cab:

## Mounting Parts Bag:

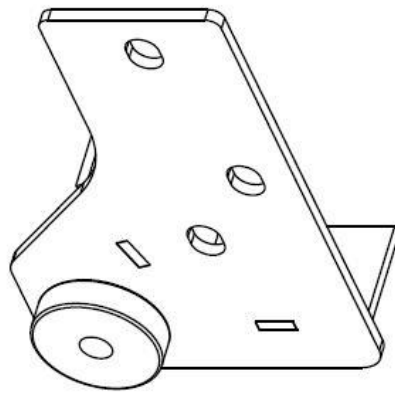
Description	Qty
Bolt, Carriage, 5/16" x 1", YD	4
Nut, Flange, 5/16", YD	4
Bolt, Hex, 5/8" x 3", Gr. 8, YD	2
Washer, Flat, 1/4" thick	2
Nut, Flange, 5/8", Gr. 8, YD	2
Bolt, Hex, 1/2" x 4 1/2"	2
Wire Loop, 1/4"	2
Wire Loop, 3/8"	2
UKC-X Foam, 3/8" x 3/4"	72"

## Loose components:

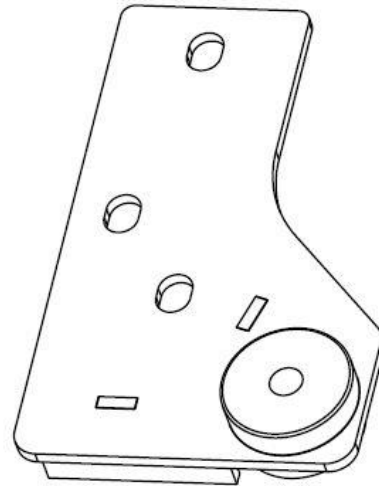
Description	Qty
Floormat, Main Platform	1
Step Bracket	1
Rear Mounting Brackets	L&R

## Water Heater Kit components:

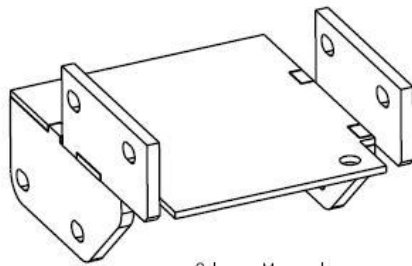
Description	Qty
Hose Clamps, HS-6	8
Round Grommet, 1", #8 (RB-249)	2
3/8" ID Heater Hose	8 FT
Zip Ties	6
5/8" to 3/8" Reducer	2
5/8" Heater Hose, 3" Long	2



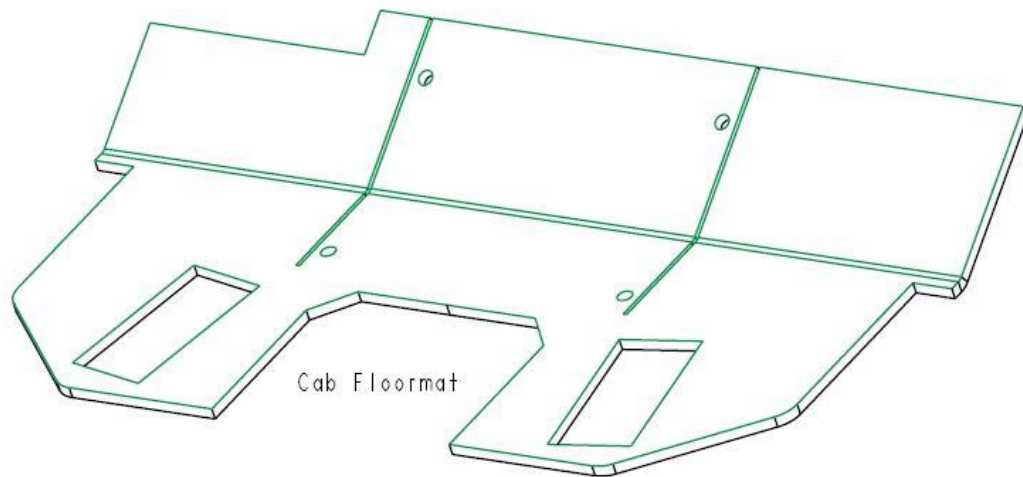
LH Rear Bracket



RH Rear Bracket



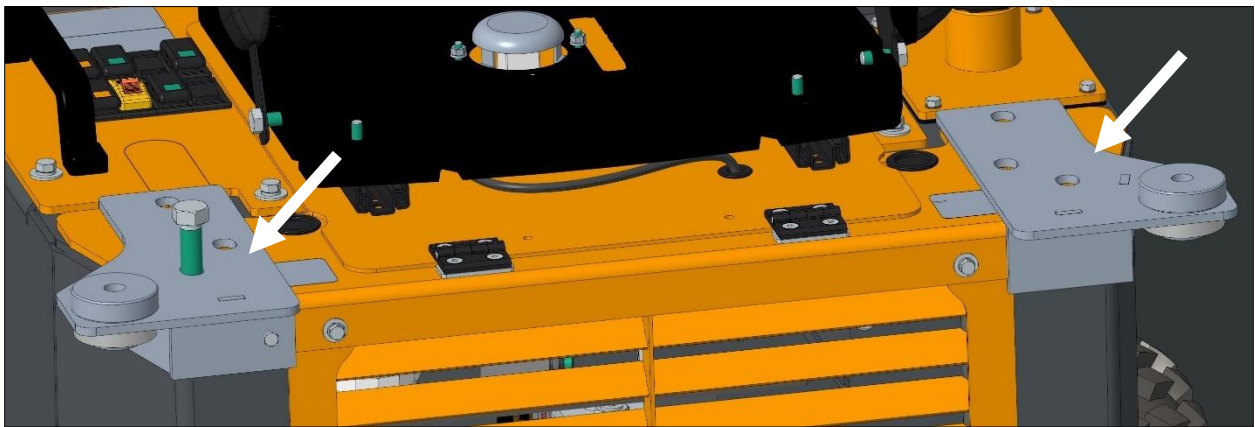
Step Mount  
Bracket



Cab Floormat

**Standard Cab Installation Instructions:**

- \*\* Prior to starting, park tractor in a well-ventilated location, lower all tractor attachments.
- \*\* Disconnect tractor battery.
- \*\* Un-bolt and remove the factory 4-post ROPS from the operator platform.
- \*\* Disconnect and remove wire harness going to the lights on the 4-post ROPS.
- \*\* Take the left rear bracket and position onto the left rear of the machine where the 4-post ROPS was mounted. Re-use factory hardware and fasten into place.

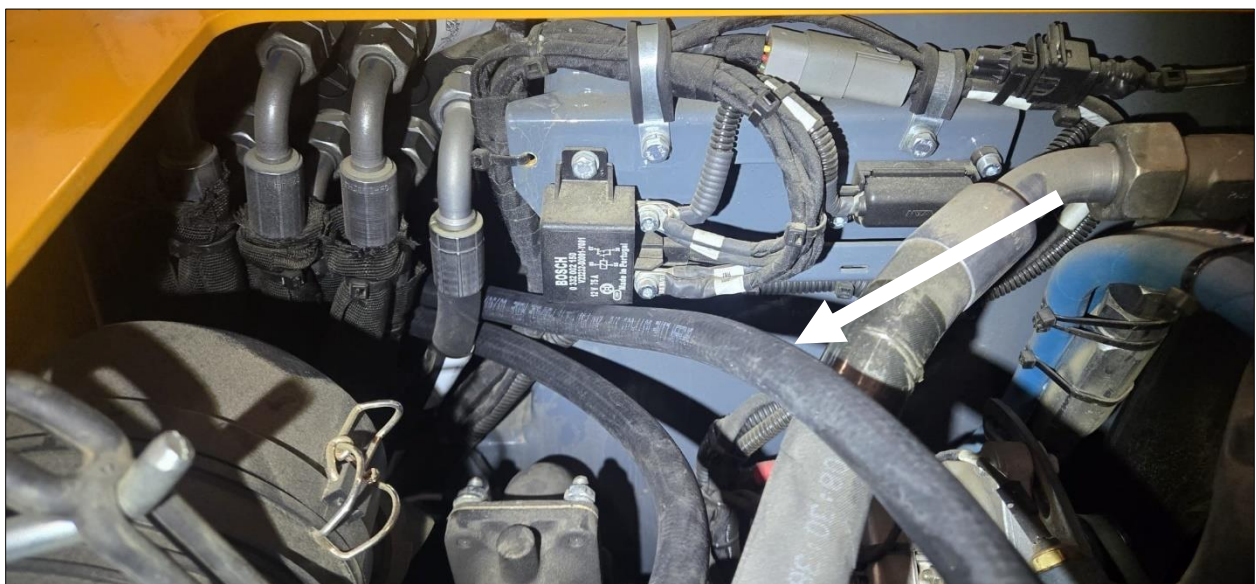


- \*\* Take the right rear bracket and position onto the right rear of the machine where the 4-post ROPS was mounted. Re-use factory hardware and fasten into place.
- \*\* Un-bolt the cover on the right hand console below joystick control. It will be necessary to drill to 1" holes into that plate for the heater hoses.





\*\* Ensure the holes for hoses will clear the hydraulic hoses behind the panel, then mark and drill two 1" hoses as shown. Note location of routed hoses in picture below.



\*\* Install the two round grommets into place.



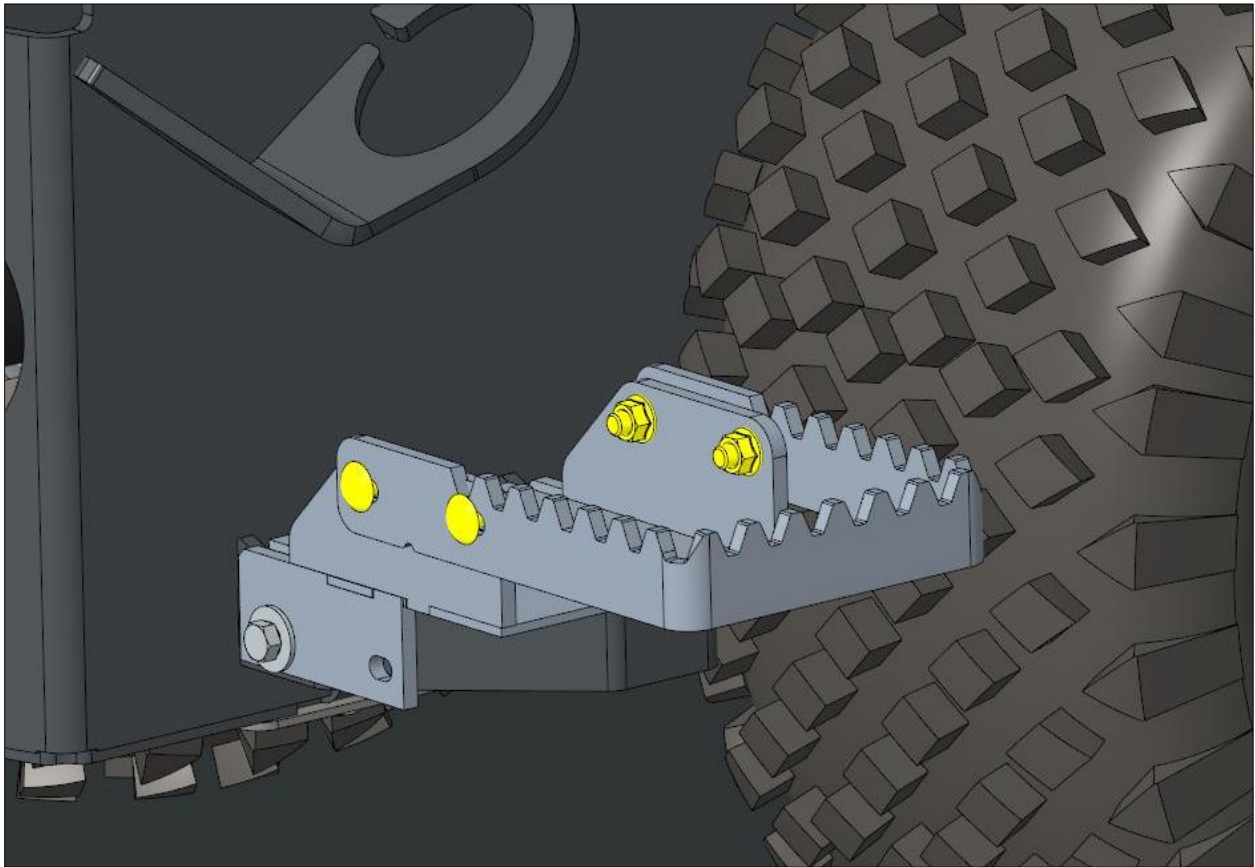
\*\* It is recommended to route the heater hoses through the plate just re-installed now, prior to cab being installed onto tractor unit.





\*\* Unbolt the factory step on the left side of the tractor.

\*\* Take provided step mount bracket and bolt into original place with factory hardware. Ensure that the step is being raised up.



\*\* Fasten step to the mount bracket with provided 5/16" x 1" carriage bolts and flange nuts.

\*\* Tilt the seat plate up. Clean the outer perimeter underneath at the outside edge. Use the provided open cell foam and attach to bottom of plate.



\*\* Return to cab to install lift brackets next. To remove the gas shock on the left cab door, slide a flat screwdriver underneath the small clip on the end cap that must be pulled UP in order to pop the shock off of the ball stud. **The shock will release VERY easily when this is accomplished.** Lift the door straight up and off of the cab and put aside for now.



\*\* Repeat for the right door as well.

\*\* Take one of the ½" x 4 ½" hex bolts and fasten to the weld nut lift tab located at the top of the door b-post. Repeat for the other side.

\*\* Take a lift strap or chain, and connect both lift bolts to an over-head hoist or forklift.

\*\* Carefully un-bolt the cab from the front and rear shipping brackets and then slowly lift cab off of the shipping pallet.

\*\* Position the cab over the machine. Use **soapy water** on the cab rubber seals to make them slide into position easier. The rear vertical side seals need as much assistance as possible.

\*\* It will be necessary to start the machine and extend front loader boom while lowering cab down into place. Also, pull steering wheel in as close to seat as possible to make it easier to get the cab into position.

\*\* Lower cab down into position until isolators are contacting the rear mount plates. Front fastener will align with where the 4-post ROPS was attached to rear the steering column, re-use factory hardware at the front bolts.





\*\* For the rear ROPS fasteners, use the provided 5/8" x 3" hex bolts, heavy 1/4" flat washer and flange nut. Flat washer goes underneath against the isolator. Get both fasteners started and the two front bolts started.



\*\* Once everything is started, release all pressure high over-head hoist and commence applying torque to all fasteners. ROPS isolator bolts need 204 ft-lbs. The rear bracket fasteners will require 175 ft-lbs of torque. The front fasteners will require 136 ft-lbs of torque.

**\*\* Un-bolt and remove chain or lift strap.**

**\*\* Remove lift bolts from cab on both sides. Store for future if you think you may remove cab from machine.**

**\*\* Power for the cab will be connected next. We recommend connecting directly to the tractor battery which is located in front of the front axle. Lift front telehandler extension up to provide access to the battery.**

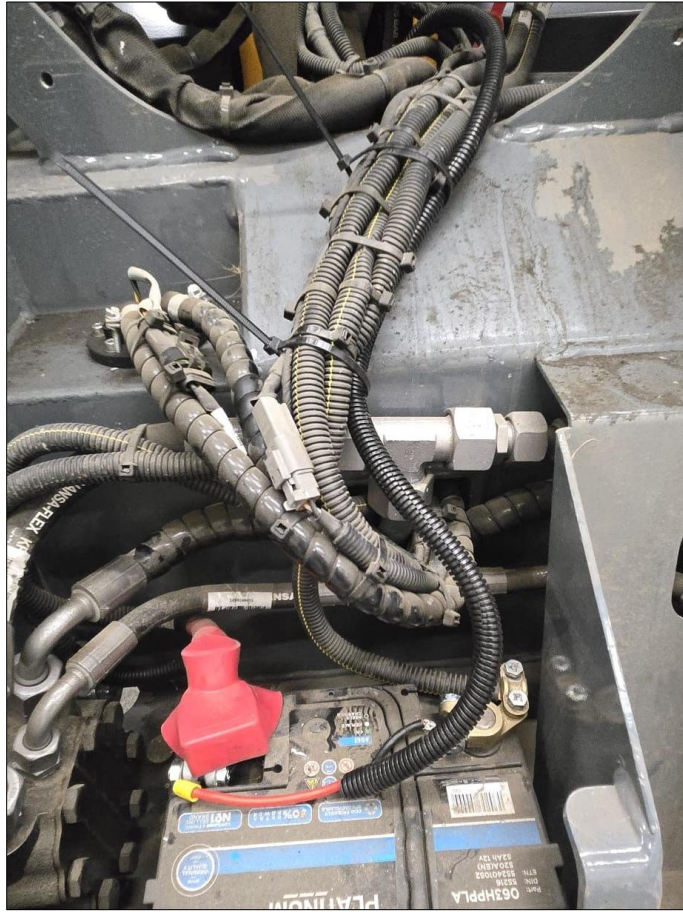


**\*\* Route the loomed power and ground harness from the bottom of the front left A-post of the cab. Use provided zip ties to secure to chassis and hose bundle as routing towards the battery.**



**\*\* Route wires forward all the way to the battery. Use provided loop connectors. Black to ground, red goes to 12V side of battery. Shorten if necessary, then crimp on connectors. Connect to battery.**





\*\* Drain the engine coolant.

\*\* Connect the 5/8" heater hoses to the bottom of the heater with provided hose clamps, along with the reducers.

\*\* Connect the heater hoses coming out of the panel installed earlier onto the bottom of the reducers on the heater. It doesn't matter which side is connected to which hose, there is no valve.



**\*\* Locate the engine bypass hose and remove.**



**\*\* Route the heater hoses to the bypass valve location. Ensure adequate length, then cut hose. Secure onto open end of one side of the bypass connection. Secure into place with zip ties. Ensure, no contact with hot surfaces or moving components.**





\*\* Repeat for the other end of the heater hose.



\*\* Ensure that the heater hoses are properly retained into place before re-filling engine coolant.

\*\* Re-fill coolant.

\*\* Start engine, and run with radiator cap off to allow the air bubbles in the coolant system to evacuate. This may take a little while, but the air at the heater should be very HOT when air is fully purged. If necessary, drive the G1200 around some uneven surfaces to loosen up any air bubbles that are not coming out of the system.

\*\* Take the provided cab floormat and position onto the operator platform. Slide floormat around the left and right front pedals on the foot platform. It may be necessary to notch the material. Ensure the bolt holes for the loose panel align properly, and fasten bolts through floormat.

\*\* Use 3M aerosol glue and glue down the floormat to the rest of the platform. ENSURE that upper panel can be opened for service and maintenance.

\*\* To ensure a proper seal, use a black silicone around all the small open cracks between the cab weather stripping and the tractor.

## Giant G1200 ROPS Cab



Note: Cab may be shown with optional accessories.

### Giant G1200 ROPS Cab.

This ROPS cab is designed and built to fit:

Giant G1200 tractors.

#### Designed and built by:

Tektite Manufacturing Inc:  
P.O. Box 639 - 427 Buffalo Street  
Winkler, MB, Canada  
R6W 4A8  
PH: 204-331-3463  
[parts@tektite.ca](mailto:parts@tektite.ca)

One-year standard product warranty provided by Tektite Manufacturing Inc.  
[www.tektite.ca](http://www.tektite.ca) / [www.tektitecabs.com](http://www.tektitecabs.com)



**DO NOT PROCEED FURTHER UNTIL YOU HAVE READ THE  
INFORMATION BELOW.**

- 1) Always wear personal protective equipment.
- 2) A minimum of two people is necessary to safely install the cab.
- 3) This ROPS cab is heavy. A lift assist device such as an overhead hoist or high lift forklift is required.
- 4) Ensure your work area is well ventilated. The installation requires the starting of the tractor which will produce dangerous carbon monoxide fumes.
- 5) Read through the entire installation manual first.
- 6) Follow the installation instructions in order.
- 7) Reading the operators manual prior to using the ROPS cab.



### **Tektite Limited Warranty**

Tektite Manufacturing Inc. ("Tektite") warrants to the original purchaser (the "Claimant"), that Tektite products will be free from defective materials or workmanship, under normal use and service, for a period of (1) full year from the original invoice date. Tektite's liability under this Limited Warranty is limited to the repair or (at the discretion of Tektite) the replacement of those components of its products, which were manufactured by Tektite that are defective in materials or workmanship. Tektite shall have no liability under this Limited Warranty unless Tektite is notified of the defect during the stated Warranty Period.

Limitations and Exclusions: Tektite has no responsibility to a Claimant under this Limited Warranty or on any other basis for any of the following:

- a) defects caused, in whole or in part, by accident or misuse, negligence or failure to maintain the product or component;
- b) products or components sold to a customer on an "as is" basis;
- c) wiper blades, light bulbs, fuses, clear vinyl or other consumables;
- d) glass where the point of failure has not been preserved intact and delivered to Tektite for analysis of the cause of the failure;
- e) products or components which have been modified after shipping from Tektite to its customer;
- f) transportation charges for returned, repaired or replacement items;
- g) defects that are subject of a Tektite initiated recall where the Claimant fails to comply with the terms of the recall notice that comes to the attention of the Claimant;
- h) components of Tektite products that are manufactured by third parties (Tektite's only obligation in relation to such components shall be to accord to the Claimant the benefit of any transferable warranty accorded to Tektite by third party manufacturer);
- i) defects in workmanship or materials in products or components that are repaired or replaced by Tektite unless Tektite is notified of the new defect within the Warranty Period that applied to the original product or component that has been repaired or replaced;
- j) defects that result, in whole or in part, from inadequate engineering or specifications provided to Tektite by its customer;
- k) any actual or alleged deficiency in technical or engineering services or advice provided by Tektite to its customer whether provided for valuable consideration or otherwise;
- l) consequential damages, or any other damages whether foreseeable or not, resulting from the defect or any delay in remedying the defect;
- m) any breach or alleged breach of any implied warranty of merchantability or fitness for particular purpose of use;
- n) defects or part failure due to misuse or failure to follow recommended cab installation procedures; and
- o) travel expenses, including mileage.

This Limited Warranty expresses the entire obligation of Tektite, its officers, directors, agents and employees, to its customer or any Claimant in respect of any defect in workmanship, or materials of any product or component sold or manufactured by Tektite whether on grounds of breach of contract, negligence or other tortious liability, breach of express or implied warranty or other basis in law of any jurisdiction.

Acceptance by a customer of delivery of products of Tektite constitutes acceptance of this Limited Warranty in lieu of all other warranties express or implied including without limitation all implied warranties of merchantability or fitness for particular purpose or use and constitutes acceptance by customer of the exclusions and limitations of the liability of Tektite set out above. Once received, the cab should have ALL exterior cardboard, Styrofoam wrapping removed for immediate inspection of product to ensure that no damages have occurred during transportation. Outer coverings should stay off the cab and the cab be stored indoors in a controlled environment. The warranty card must be completed and returned to Tektite.

Warranty claims should be reported to [parts@tektite.ca](mailto:parts@tektite.ca). A warranty claim form and instructions will be provided at this time. Warranty work not pre-authorized by Tektite may not be covered by this warranty agreement. Labor rate and time allowances are fixed by Tektite. Approved warranty claims will be issued in the form of credits applied to customer account.

## Safety Precautions

### *Safety First*

Read these instructions carefully. It is essential that you read the instructions and safety regulations before you attempt to assemble or use the features that are on this cab/ROPS.

**Danger:** Indicates an immediate hazardous situation which, if not avoided, will result in death or serious injury.

**Warning:** Indicates a potentially hazardous situation which, if not avoided, may result in death or serious injury.

**Caution:** Indicates a potentially hazardous situation which, if not avoided, may result in minor or moderate injury.

**Important:** Indicates that cab or property damage may result if instructions are not carefully followed.

**NOTE:** All products are designed to give safe, dependable service if they are operated and maintained according to instructions. It is the owner's responsibility to be certain anyone operating this product reads this manual, and all other applicable manuals, to become familiar with this cab and all safety precautions. Failure to do so could result in serious personal injury or cab damage. If you have any questions, consult your dealer. Read and understand this manual before operation.

**NOTE:** A safe operator is the best assurance against accidents. All operators, no matter how experienced they may be, should read this operator manual and all other related manuals before attempting to operate features in this cab/ROPS and operate the base tractor. Please read the following section and pay particular attention to all safety recommendations contained in this manual and those labelled on the cab and on the tractor.

## **General Safety**

1. Never let an unqualified or untrained driver operate the tractor.
2. Keep a fire extinguisher, with ABC rating securely fastened in the ROPS. Maintain it and be familiar with its use.
3. Do not carry passengers.
4. Never operate the tractor in a closed building for a prolonged period. Ensure adequate ventilation is present, as engine exhaust fumes are poisonous and can kill.
5. Always keep sleeves, jackets or other loose clothing relatively tight and belted. Loose clothing may catch on moving parts and result in severe personal injury or death.
6. Provide a first-aid kit, securely attached inside of the ROPS for use in case of accident.
7. Never jump from the tractor. There is a danger of tripping or falling on protruding parts.
8. Use steps and hand holds when mounting and dismounting the tractor, or for servicing components too high to reach from the ground.
9. When seated in the ROPS, fasten seat belt before starting the engine. A proper seat belt must be worn at all times when using a ROPS.
10. Safety devices and shields are intended to protect operators from injury or death. Under no circumstances should they be modified, disabled or removed.

## **Operating Safety**

1. Always operate the tractor controls while sitting in the operator's seat.
2. Lock seat in position and buckle seat belt before operating the tractor.
3. Avoid abrupt sharp turns at high speeds.
4. On sloped terrain, do not make sharp turns as machine stability could be compromised.
5. Operate the tractor smoothly, avoid abrupt starts and stops.
6. Keep all shields in place when operating the tractor.
7. Do not operate the tractor when you are tired, sick, or impaired.
8. Never operate the tractor in confined areas; visibility next to the tractor is reduced. Injury to bystanders or damage to the ROPS or equipment may result.

## **Safety**

Carefully review the procedures given in this manual and the tractor operator's manual with all operators annually. It is important that all operators become familiar with, and follow safety precautions. Operating instructions must be given to everyone using the tractor before operation and at least once yearly thereafter in compliance with OSHA Regulations 1928.57 (United States).

### **Safe Operation on Rough Terrain**

1. Drive the tractor slowly on hillsides and curves to eliminate the danger of tipping. Avoid slopes which are too steep for safe operation. Avoid sharp uphill turns.
2. Always drive slowly enough over rough ground or obstructions. Drive at speeds slow enough to ensure your safety.
3. When driving out of a ditch, gully, or up a steep hillside, engage the clutch slowly. Avoid sharp uphill turns.
4. When descending steep grades, select a sufficiently low gear to maintain control with minimum use of braking.
5. Use caution when driving near the edge of a ditch or gully. It may cave in, causing the tractor to roll over.
6. Be alert when operating near trees, slopes and around obstructions. Tree branches can cause damage to ROPS components.

### **Maintenance Safety**

1. Remove mud, crop residue, chains, and tools from steps and operator's platform. They may interfere with pedal operation or entry/exit from tractor.
2. When servicing components are too high to reach from the ground use steps and handholds. Do not use fenders or shields that are not designed as steps.

### **Safe Highway Operation**

1. Before operating the tractor on, or near, public roadways check with your local authorities for any local regulations that will affect you.
2. Equip towed implements with slow moving vehicle (SMV) signs when traveling on public roads.
3. Install additional lights on implement rear to safeguard against rear end collisions.
4. Use hazard warning flashers as required by law when transporting or driving on public roads. If the tractor had warning flashers removed when mounting the ROPS, they must be replaced prior to operation on public roads.
5. Keep to the right, yielding right-of-way traffic, especially if pulling implements. Pull off the road and stop to allow motorists to pass. Drive on the road shoulder, if permitted by law.
6. Use extreme caution when pulling heavy loads at road speeds. Avoid hard application of the tractor brakes at high speed.
7. Always drive slowly near curbs, approaches or ditches.
8. If equipped, ensure headlights are aligned so they will not blind the operators of oncoming vehicles. If the tractor is not equipped with turn signals and law requires them, install them prior to operating on or near public roads.
9. Use your turn signals, checking for traffic well in advance of turning. If the tractor is not equipped with turn signals and law requires them, install them prior to operating on or near public roads.

## **Safety Decals**

1. Keep decals clean. Remove dirt with a wet clean cloth when necessary.
2. Replace safety decals if destroyed, missing, painted over or unreadable. If any safety decals are covered or obscured when the ROPS is mounted, it is recommended that you purchase replacement decals from the tractor manufacturer. Mount them in a readable location at, or near, their original location before operating the tractor.
3. New ROPS decals and tractor decals are available from your tractor dealer.

## **ROPS Safety**

1. Install the ROPS in accordance with Tektite mounting instructions. Failure to do so may affect the ROPS ability to withstand a roll over.
2. If the ROPS is subjected to alteration, structural damage or involved in an over turn accident, the entire structure must be replaced. Failure to do so may result in injury or death in the event of a roll over.
3. If the tractor is not equipped with seat belts, purchase approved seat belts from the tractor manufacturer or Tektite prior to operating the tractor.
4. Always fasten seat belts prior to operating the tractor.
5. Always operate the tractor from the operator's seat.
6. Remove mud, crop residue, chains and tools from steps and operator's platform. They may interfere with pedal operation or entry/exit from the tractor.
7. Remove all loose chains, tools, and equipment from the operator's platform. Failure to do so may cause injury or death in the event of a roll over.
8. Do not install the ROPS on a tractor model that the ROPS is not designated for (compatible tractor designations are printed on the ROPS serial number plate). The ROPS is designed specifically for individual models to ensure ROPS requirements will be met. Installing the ROPS on a non designated tractor may result in injury or death.

## **Emergency Exits**

The ROPS cab has two doors. Either one can be used during an emergency.

## Operating Instructions

### Important

The following section locates, identifies, and briefly describes the functions of all cab controls. All operators should familiarize themselves with control location and function prior to operating the tractor. Failure to do so may result in unsafe operation of the tractor and possible injury or death to operators and bystanders.

There is one switch plate located in the cab. The following switches are available, and their functionality is described.



### Cab Switch Plate

#### 1. Front Wiper Rocker Switch (standard)

Low position: Off

High position: On

Note: indicator light activates when wiper is on.

#### 2. Rear Wiper Rocker Switch (not available on all models)

Low position: Off

High position: On

Note: indicator light activates when wiper is on.

#### 3. Front Work Light Rocker Switch (standard)

Low position: Off

High position: On

Note: indicator light activates when work lights are on.

#### 4. Rear Work Light Rocker Switch (optional)

Low position: Off

High position: On

Note: indicator light activates when work light is on.



**5. Washer Momentary Switch (Front and Rear optional)**

Low position: On

Mid position: Off

High Position: On

**6. Beacon Rocker Switch (optional)**

Low position: Off

High position: On

Note: indicator light activates when work lights are on.

**7. Water Heater Fan Rocker Switch (standard)**

Low position: Off

High position: On

Note: indicator light activates when the water heater is on.

Standard and optional features are individually fused, and the fuses can be accessed behind the plug in the middle of the switch-plate.

**Cab Circuit Protection**

The Tektite ROPS cab is wired to provide maximum protection against individual circuit overload. All optional components are fused internally behind the cab switch plate. Cab wiring is direct to the tractor battery. DO NOT leave options activated when tractor is not running as battery run down can occur.

Please note: Tektite does have a key switch power option to provide maximum protection against accidental battery rundown and circuit overload. A relay is ignition activated and prevents the operator from accidentally leaving fan motors, lights on after turning the tractor off and leaving for the day. A circuit breaker is provided to prevent the cab electrical components from drawing more power than they should be able to from a dead short. This option can come with your cab if selected or field installed later.

**Giant 1200 ROPS Cab**

The Giant G1200 cab is designed to provide ROPS and FOPS protection, along with reasonable winter weather protection. The cab design for this model features glass windows at all window locations.

If you are going to be running the tractor with the cab on during the summer months, un-hook the gas shocks on each door, and then lift the doors off the pin hinges.

**After your ROPS Cab has been installed:**

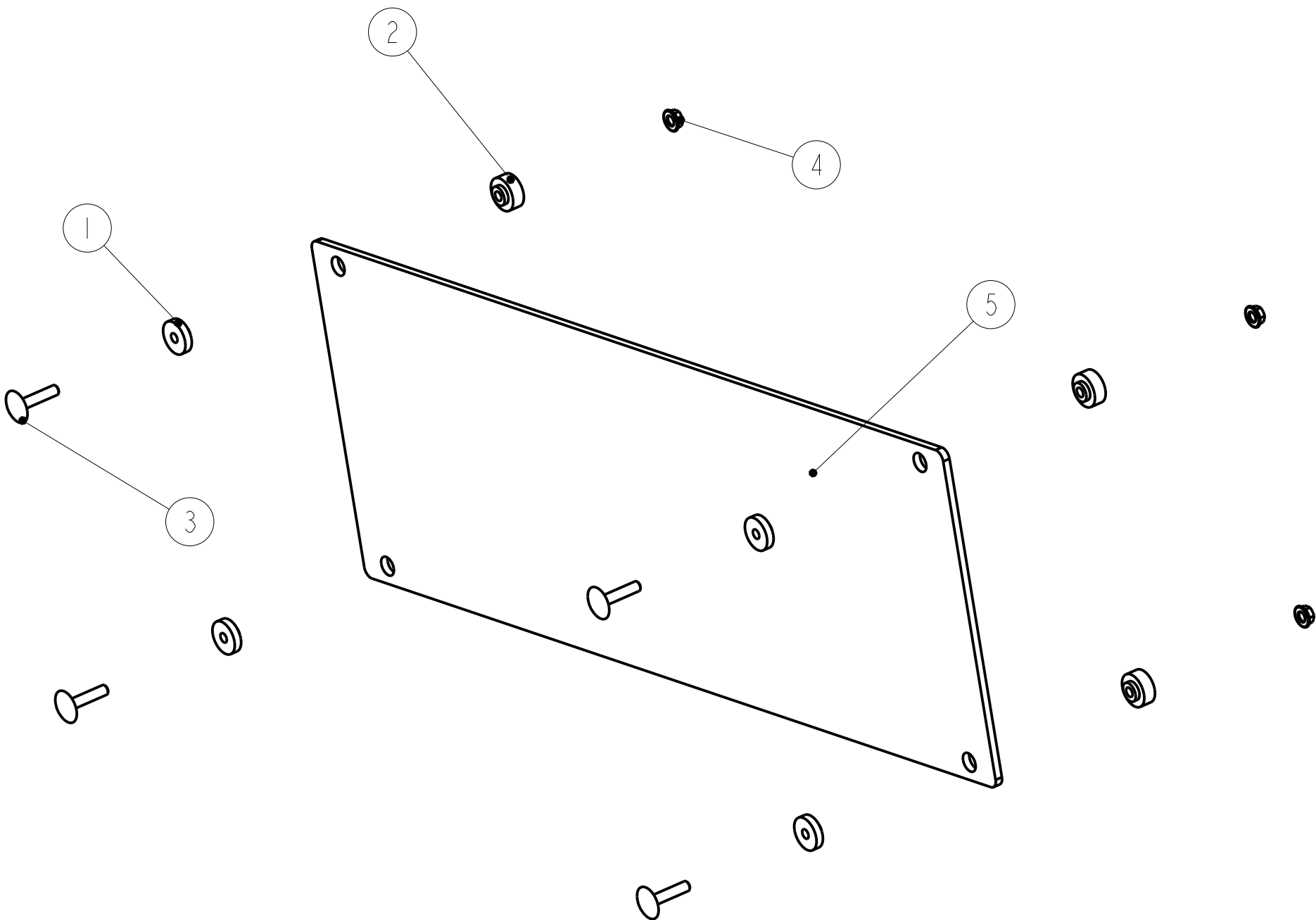
Before starting a tractor equipped with a Tektite ROPS cab:

1. Clear the operator platform of all tools. Tools left in or around the ROPS and tractor can cause operator interference which could lead to bodily injury and/or damage the machine.
2. Inspect the ROPS and tractor to ensure all bolts are tight and re-tighten if required.
3. Ensure that all pedals, levers, and controls have adequate clearance for normal operation.
4. Ensure that all electrical components of both the ROPS and tractor operate normally.
5. Ensure your door latches properly onto the striker pin. Immediately after installation, the ROPS frame may flex slightly from installation, and the door latch will need to be re-aligned for proper operation. Loosen the striker pin, striker mounting plate and door latch as necessary to get a proper alignment of the door striker.

**Service Parts Breakdowns:**

Following are parts breakdowns for components that may require service parts replacement during the life of the ROPS. If you require replacement parts, please contact the dealer that you purchased the ROPS from and indicate which parts you require.

Index	Service Part #	File Name	Description	Qty
1	A00-0013	TEKT-0009	5MM Bushing	4
2	A00-0014	TEKT-0092	Thick Bushing	4
3	A00-0020	STEP-BOLT1-4X1-1-4	Step Bolt, 1/4" x 1 1/4", MB	4
4	A00-0021	FLANGE-NUT-1-4	Flange Nut, 1/4", YD	4
5	G01-0015	G1200-089	Roof Window Lexan	1



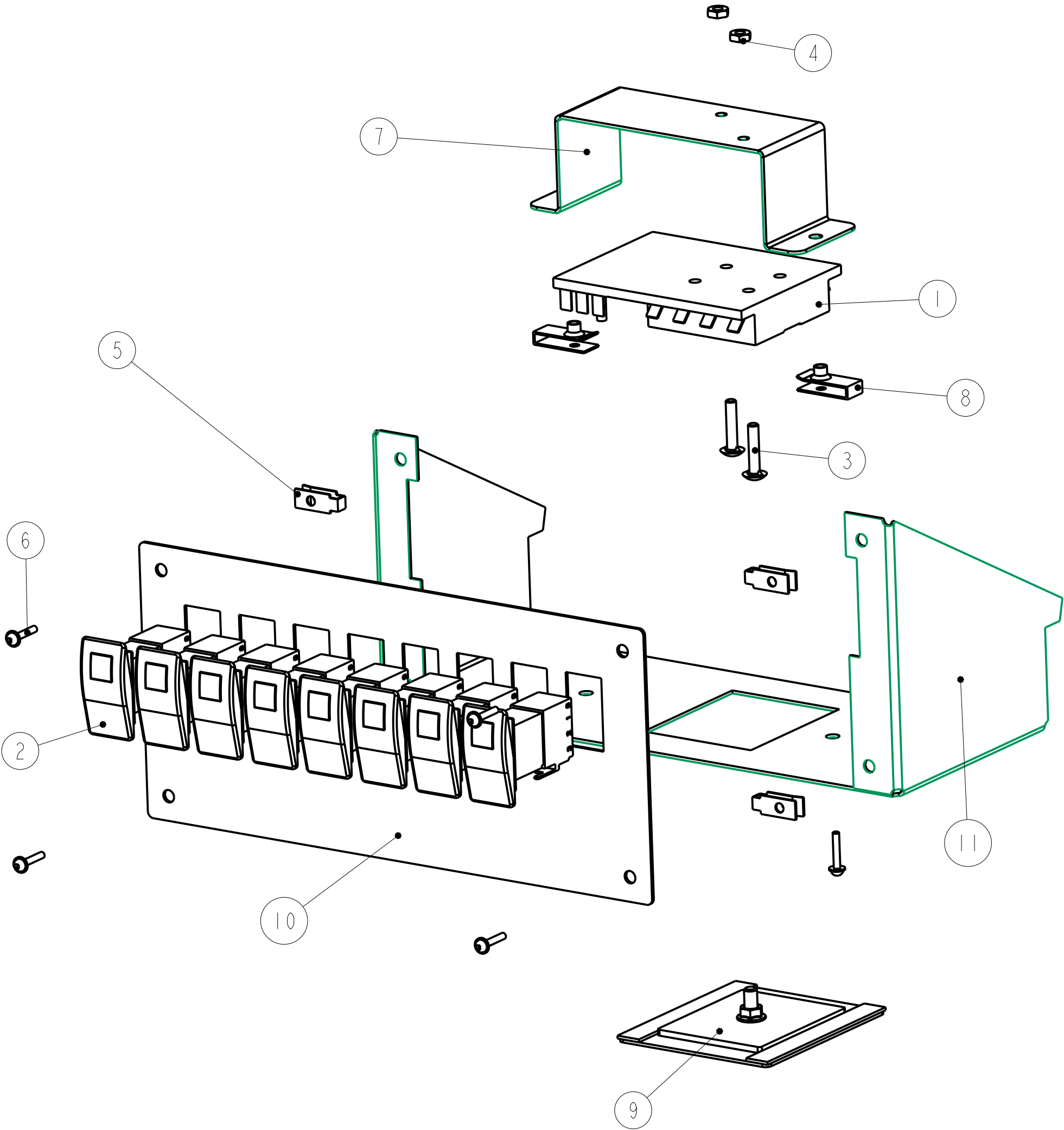
Notice of Confidentiality

This material is property of Tektite Manufacturing Inc and is not to be used by the recipient for any purpose other than the purpose for which it was transmitted. The material remains the property of Tektite and shall be returned upon request. The material may not be reproduced or disclosed to third parties without the written consent of Tektite.

Tolerances:  
Unless otherwise specified  
X.X = ±1/16"  
Angular = ± 1.0°

Tektite Manufacturing Inc. 427 Buffalo Str, Box 639, Winkler MB, R6W 4A8, Canada				
Req'd:	CNC:	Description:		
1 req		Roof Window Seal		
Drawn By:	Date:	Units:	File Name:	
	2025-03-06	Imp.	G1200-ASM-16	
Checked By:	Date:	Size:		
		B		

Index	Service Part #	File Name	Description	Qty
1	A00-0024	BUSS-15600-08-11	Power Block/Ground	1
2	A00-0065	TEKT-ASM-005	On-Off Switch w/Lens	8
3	A00-0180	BOLT_10-32X1	Fuse Block Bolts	2
4	A00-0181	HEX-NUT-10-32	Fuse Block Nuts	2
5	A00-0218	TEKT-0218	10-24 Panel Nut	4
6	A00-0354	SCREW-10-24X3-4	Screw, 10-24 x 3/4",MB	6
7	A00-0418	TEKT-0010	Fuse Block Retainer Bracket	1
8	A00-0494	TEKT-0221	10-24 Panel Nut, Thick	2
9	A00-0531	TEKT-ASM-086	2023 Fuse Cover, Magnet Assembly	1
10	A00-0539	TEKT-0248	Switch Plate, V5 ST	1
11	n/a	TEKT-0247	Switchplate Mount V7	1



**Tektite Manufacturing Inc.**  
427 Buffalo Str, Box 639, Winkler MB, R6W 4A8, Canada

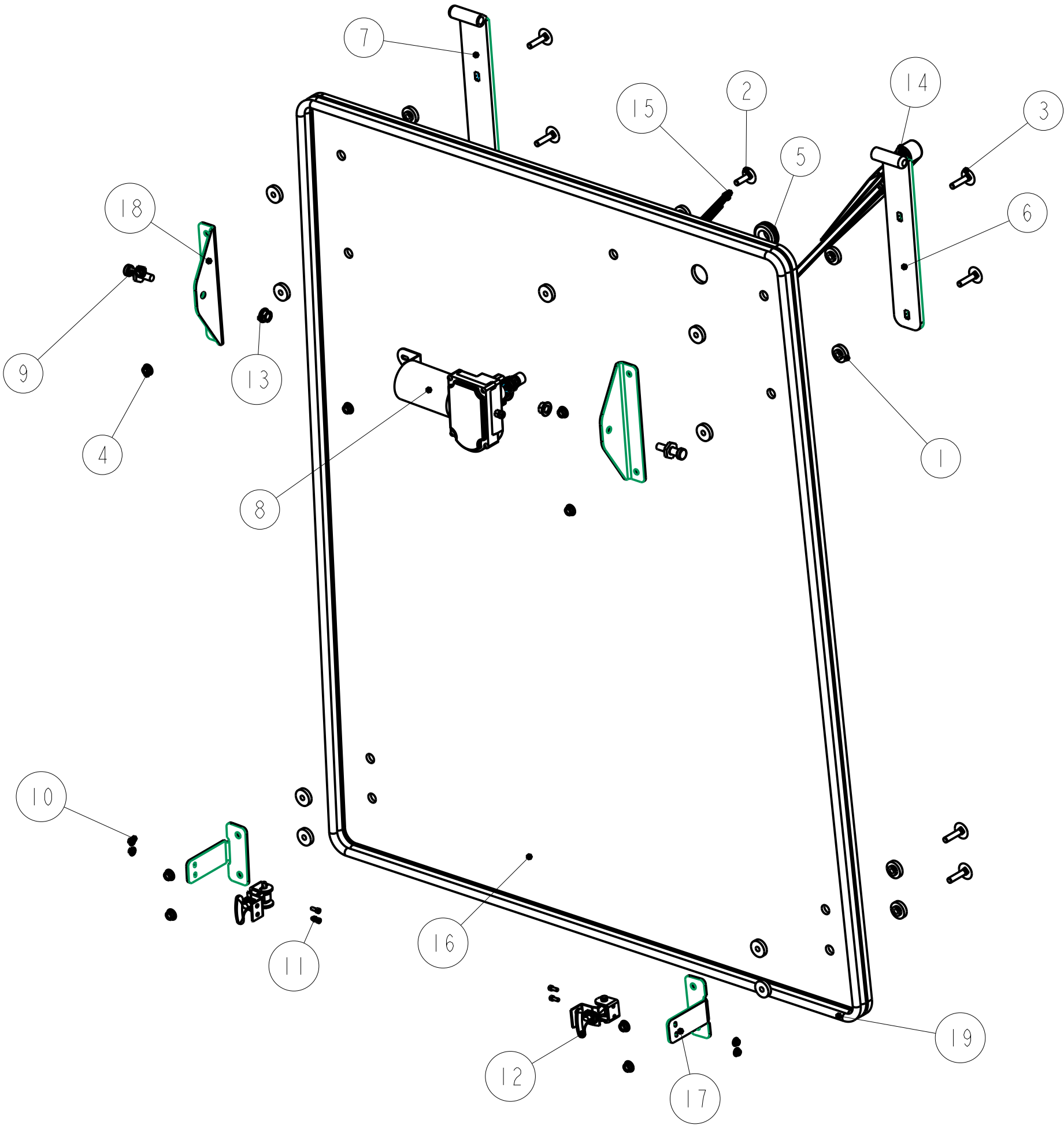
Notice of Confidentiality

This material is property of Tektite Manufacturing Inc and is not to be used by the recipient for any purpose other than the purpose for which it was transmitted. The material remains the property of Tektite and shall be returned upon request. The material may not be reproduced or disclosed to third parties without the written consent of Tektite.

Tolerances:  
Unless otherwise specified  
X.X =  $\pm 1/16"$   
Angular =  $\pm 1.0^\circ$

Req'd:	CNC:	Description:	2023 Steel Top Fuse Block Assembly		
1 req					
Drawn By:	Date:	Units:	File Name:		
Daryl Furkalo	2023-06-02	Imp.	TEKT-ASM-088_OP		
Checked By:	Date:	Size:			
		B			

Index	Service Part #	File Name	Description	Qty
1	A00-0013	TEKT-0009	5MM Bushing	18
2	A00-0019	STEP-BOLT1-4X1	Step Bolt, 1/4" x 1", MB	1
3	A00-0020	STEP-BOLT1-4X1-1-4	Step Bolt, 1/4" x 1 1/4", MB	8
4	A00-0021	FLANGE-NUT-1-4	Flange Nut, 1/4", YD	9
5	A00-0033	315-080	Rear Wiper Shaft Grommet	1
6	A00-0039	TEKT-ASM-001	Left Door Hinge Weldment, Upper	1
7	A00-0042	TEKT-ASM-001R	Right Cab Door Hinge Weldment, Upper	1
8	A00-0043	TEKT-0286	WWF Wiper Motor 1" Shaft	1
9	A00-0085	TEKT-0069	Gas Shock Stud	2
10	A00-0285	FLANGE-NUT-NO6	Flange Nut, No 6	4
11	A00-0286	SOCKET-HEX-CAP-SCREW_NO6X3/8	Socket Head, Cap Screw, No 6 x 3/8"	4
12	A00-0397	TEKT-0276	Rubber Hood Latch	2
13	A00-0413	FLANGE-NUT-5-16	Flange Nut, 5/16", YD	2
14	A00-0429	TEKT-ASM-074	WWF, Adjustable Radial Arm, J-Hook, Long	1
15	A00-0430	TEKT-ASM-073	Wiper Blade, 16", J-Hook	1
16	G01-0003	G1200-032	Rear Window Glass	1
17	G01-0004	G1200-058	Rear Window Slide Mount	2
18	G01-0009	G1200-076	Gas Shock Mount, Rear Window	2
19	G01-0010	G1200-083	Rear Window Seal	1



**Tektite Manufacturing Inc.**  
427 Buffalo Str, Box 639, Winkler MB, R6W 4A8, Canada

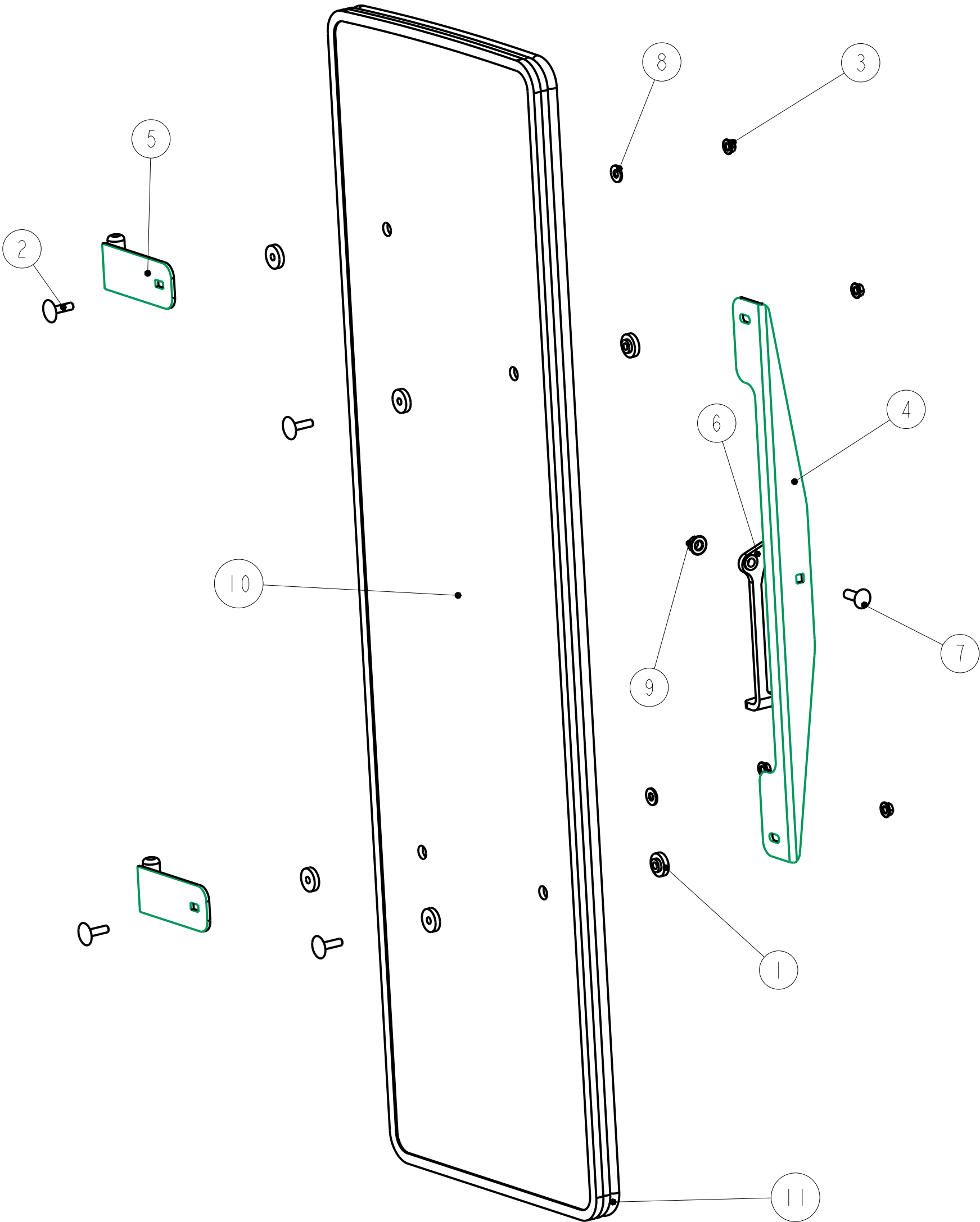
Notice of Confidentiality

This material is property of Tektite Manufacturing Inc and is not to be used by the recipient for any purpose other than the purpose for which it was transmitted. The material remains the property of Tektite and shall be returned upon request. The material may not be reproduced or disclosed to third parties without the written consent of Tektite.

Tolerances:  
Unless otherwise specified  
X.X = ±1/16"  
Angular = ± 1.0°

Req'd: <b>1 req</b>				CNC:				Description: <b>Rear Window Assembly</b>			
Drawn By:				Date: <b>2025-02-27</b>				Units: <b>Imp.</b>		File Name: <b>G1200-ASM-04_OP</b>	
Checked By:				Date:				Size: <b>B</b>			

Index	Service Part #	File Name	Description	Qty
1	A00-0013	TEKT-0009	5MM Bushing	8
2	A00-0019	STEP-BOLT1-4X1	Step Bolt, 1/4" x 1", MB	4
3	A00-0021	FLANGE-NUT-1-4	Flange Nut, 1/4", YD	4
4	A00-0045	TEKT-0004	Side Window Slider Bracket, 1" tube	1
5	A00-0046	TEKT-ASM-002R	Side Window Hinge Right	2
6	A00-0056	TEKT-0020	Side Window Latch, L60775	1
7	A00-0058	CARRIAGE_BOLT-5-16X1	Bolt, Carriage, 5/16"x 1", YD	1
8	A00-0119	WASHER_1-4	Washer, Flat, 1/4" x 5/8"OD	2
9	A00-0413	FLANGE-NUT-5-16	Flange Nut, 5/16", YD	1
10	G01-0001	G1200-030	Side Window Glass	1
11	G01-0011	G1200-084R	Side Window Seal	1



Tektite Manufacturing Inc.

427 Buffalo Str, Box 639, Winkler MB, R6W 4A8, Canada

Notice of Confidentiality

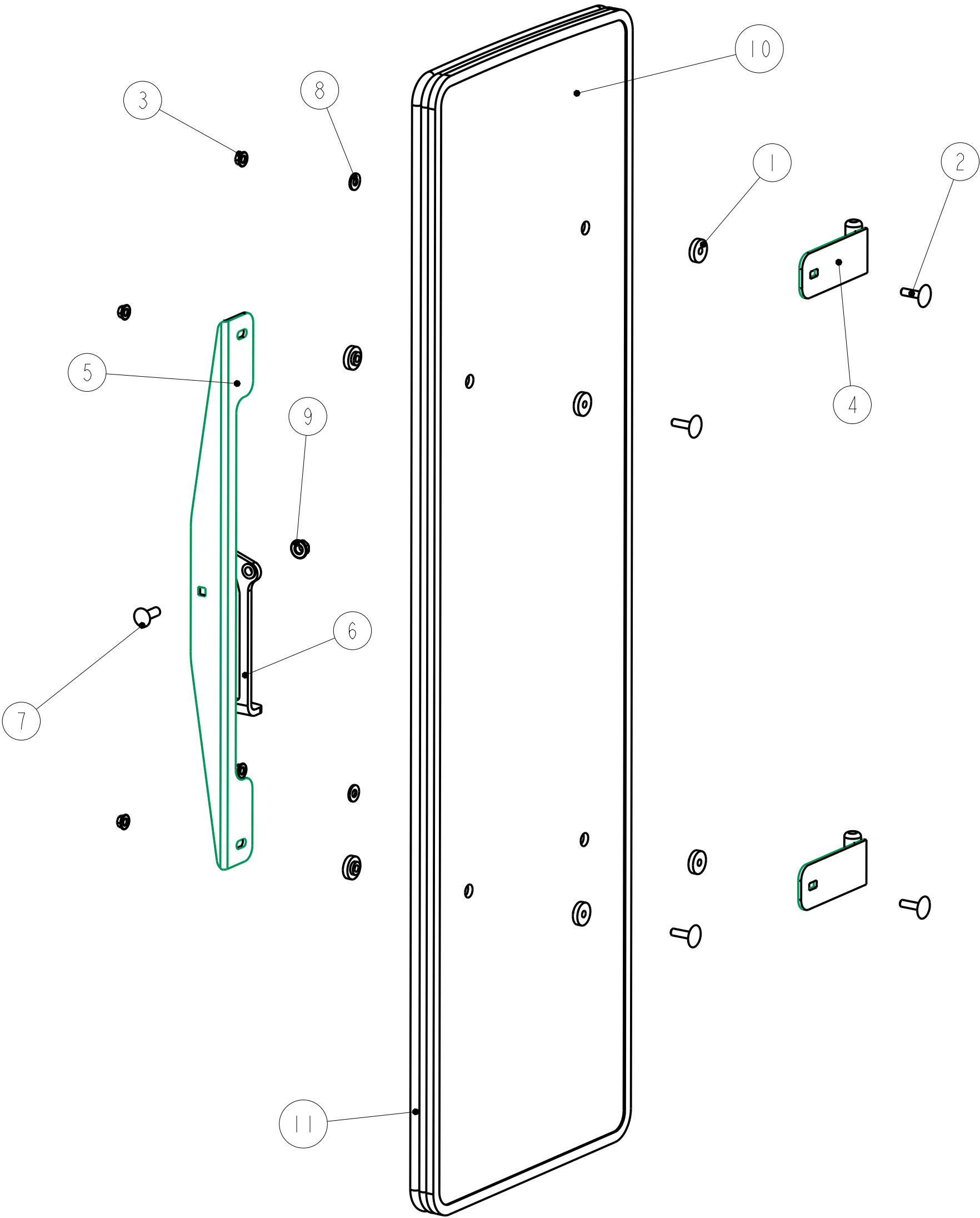
This material is property of Tektite Manufacturing Inc and is not to be used by the recipient for any purpose other than the purpose for which it was transmitted. The material remains the property of Tektite and shall be returned upon request. The material may not be reproduced or disclosed to third parties without the written consent of Tektite.

Tolerances:  
Unless otherwise specified  
X.X =  $\pm 1/16"$   
Angular =  $\pm 1.0^\circ$

Req'd: <b>1 req</b>					CNC:					Description: <b>RH Side Window Assembly</b>				
Drawn By:					Date: <b>2025-02-27</b>					Units: <b>Imp.</b>		File Name: <b>G1200-ASM-05R_OP</b>		
Checked By:					Date:					Size: <b>B</b>				



Index	Service Part #	File Name	Description	Qty
1	A00-0013	TEKT-0009	5MM Bushing	8
2	A00-0019	STEP-BOLT1-4X1	Step Bolt, 1/4" x 1", MB	4
3	A00-0021	FLANGE-NUT-1-4	Flange Nut, 1/4", YD	4
4	A00-0044	TEKT-ASM-002	Side Window Hinge Weldment	2
5	A00-0045	TEKT-0004	Side Window Slider Bracket, 1" tube	1
6	A00-0057	TEKT-0020MIR	Side Window Latch, L60776	1
7	A00-0058	CARRIAGE_BOLT-5-16X1	Bolt, Carriage, 5/16"x 1", YD	1
8	A00-0119	WASHER_1-4	Washer, Flat, 1/4" x 5/8"OD	2
9	A00-0413	FLANGE-NUT-5-16	Flange Nut, 5/16", YD	1
10	G01-0001	G1200-030	Side Window Glass	1
11	G01-0011	G1200-084	Side Window Seal	1



**Tektite Manufacturing Inc.**  
427 Buffalo Str, Box 639, Winkler MB, R6W 4A8, Canada

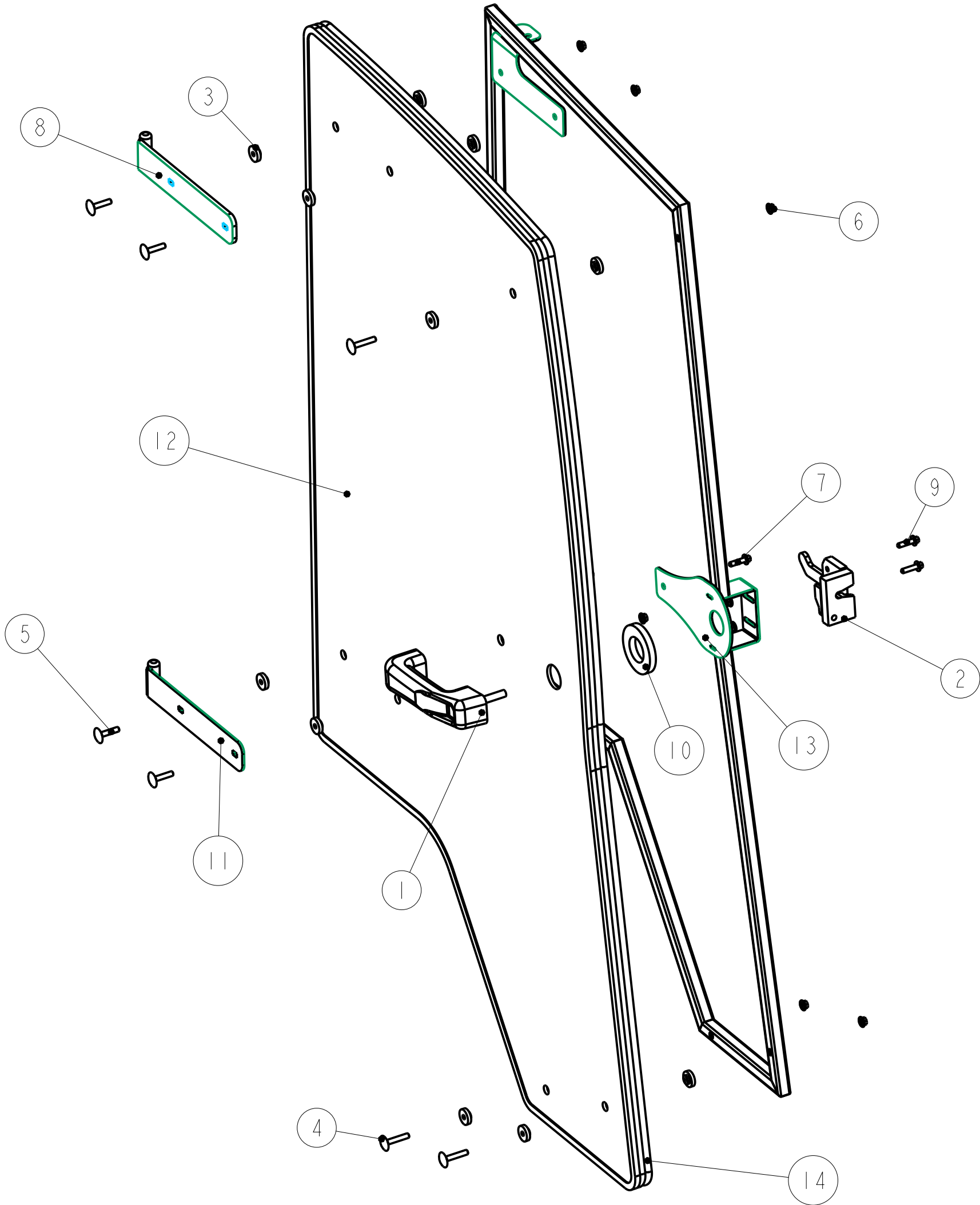
Notice of Confidentiality

This material is property of Tektite Manufacturing Inc and is not to be used by the recipient for any purpose other than the purpose for which it was transmitted. The material remains the property of Tektite and shall be returned upon request. The material may not be reproduced or disclosed to third parties without the written consent of Tektite.

Tolerances:  
Unless otherwise specified  
X.X = ±1/16"  
Angular = ± 1.0°

Req'd: <b>1 req</b>					CNC:					Description: <b>LH Side Window Assembly</b>				
Drawn By:					Date: <b>2025-02-27</b>					Units: <b>Imp.</b>		File Name: <b>G1200-ASM-05_OP</b>		
Checked By:					Date:					Size: <b>B</b>				

Index	Service Part #	File Name	Description	Qty
1	A00-0001	DLP-HANDLE	Outside Push Button Handle	1
2	A00-0003	RIGHT-LATCH	Suicide Door Right Latch	1
3	A00-0013	TEKT-0009	5MM Bushing	15
4	A00-0018	STEP-BOLT1-4X1-1-2	Step Bolt, 1/4" x 1 1/2", MB	3
5	A00-0020	STEP-BOLT1-4X1-1-4	Step Bolt, 1/4" x 1 1/4", MB	4
6	A00-0021	FLANGE-NUT-1-4	Flange Nut, 1/4", YD	9
7	A00-0022	FLANGE_BOLT_M6X25	Flange Bolt, M6x25, YD	1
8	A00-0042	TEKT-ASM-001R	Right Cab Door Hinge Weldment, Upper	1
9	A00-0118	FLANGE_BOLT_1-4X1	Flange Bolt, 1/4" x 1", YD	2
10	A00-0177	TEKT-0068	Handle Washer Spacer	1
11	A00-0229	TEKT-ASM-029R	Right Door Hinge Weldment, Lower	1
12	G01-0002	G1200-031	Door Glass	1
13	G01-0008	G1200-ASM-08R	RH Door Frame Weldment	1
14	G01-0012	G1200-085R	Door Seal	1



Tektite Manufacturing Inc.

427 Buffalo Str, Box 639, Winkler MB, R6W 4A8, Canada

Notice of Confidentiality

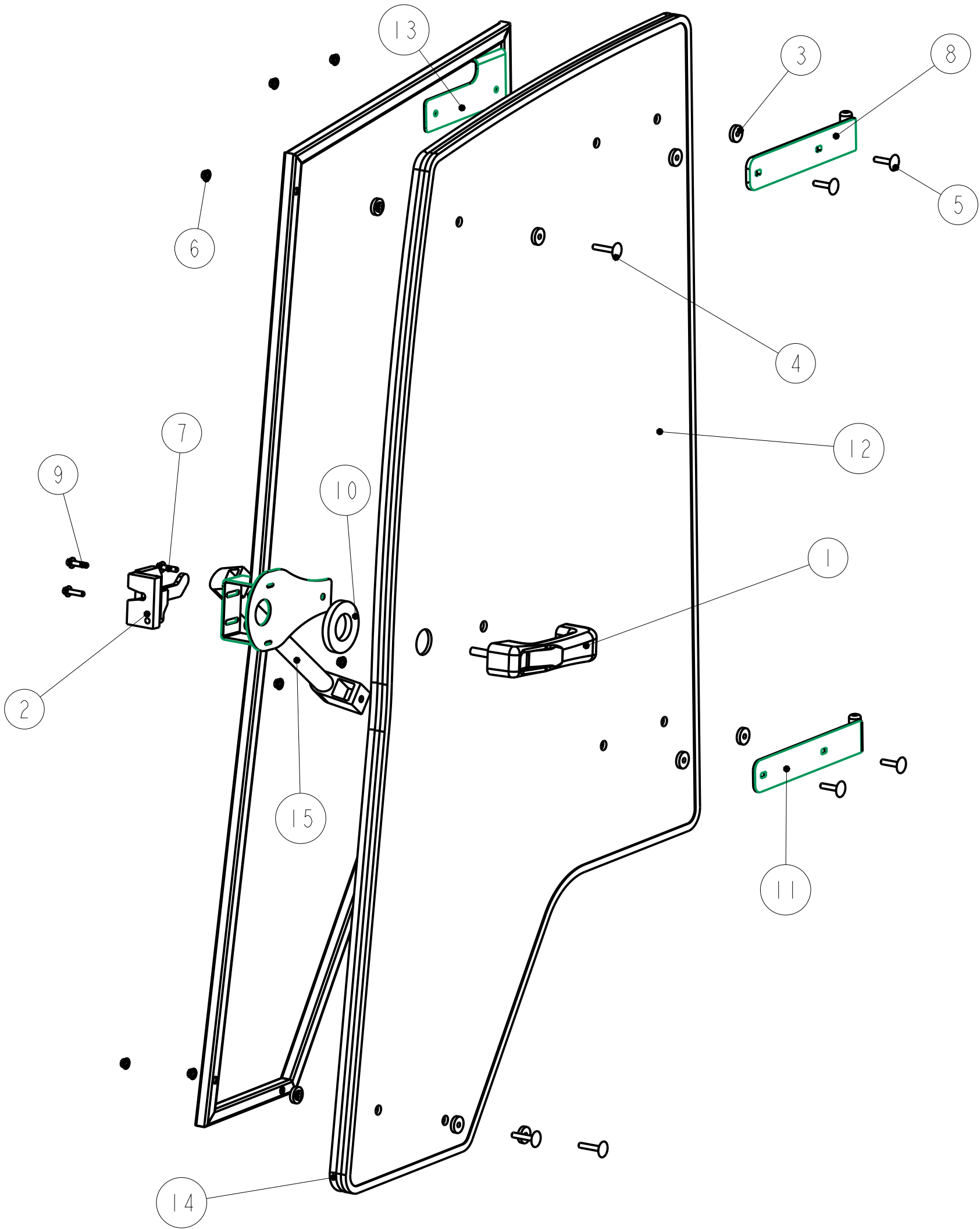
This material is property of Tektite Manufacturing Inc and is not to be used by the recipient for any purpose other than the purpose for which it was transmitted. The material remains the property of Tektite and shall be returned upon request. The material may not be reproduced or disclosed to third parties without the written consent of Tektite.

Tolerances:  
Unless otherwise specified

X.X = ±1/16"  
Angular = ± 1.0°

Req'd:	CNC:	Description:	RH Door Assembly		
1 req		Units:	File Name:		
Drawn By:	Date:	Imp.	G1200-ASM-06R_OP		
	2025-03-06				
Checked By:	Date:	Size:	B		

Index	Service Part #	File Name	Description	Qty
1	A00-0001	DLP-HANDLE	Outside Push Button Handle	1
2	A00-0002	LEFT-LATCH	Suicide Door Left Latch	1
3	A00-0013	TEKT-0009	5MM Bushing	15
4	A00-0018	STEP-BOLT1-4X1-1-2	Step Bolt, 1/4" x 1 1/2", MB	3
5	A00-0020	STEP-BOLT1-4X1-1-4	Step Bolt, 1/4" x 1 1/4", MB	4
6	A00-0021	FLANGE-NUT-1-4	Flange Nut, 1/4", YD	9
7	A00-0022	FLANGE_BOLT_M6X25	Flange Bolt, M6x25, YD	1
8	A00-0039	TEKT-ASM-001	Left Door Hinge Weldment, Upper	1
9	A00-0118	FLANGE_BOLT_1-4X1	Flange Bolt, 1/4" x 1", YD	2
10	A00-0177	TEKT-0068	Handle Washer Spacer	1
11	A00-0228	TEKT-ASM-029	Left Door Hinge Weldment, Lower	1
12	G01-0002	G1200-031	Door Glass	1
13	G01-0007	G1200-ASM-08	LH Door Frame Weldment	1
14	G01-0012	G1200_085	Door Seal	1
15	G01-0014	G1200-087	Grab Handle, 14" O.C.	1



Tektite Manufacturing Inc.

427 Buffalo Str, Box 639, Winkler MB, R6W 4A8, Canada

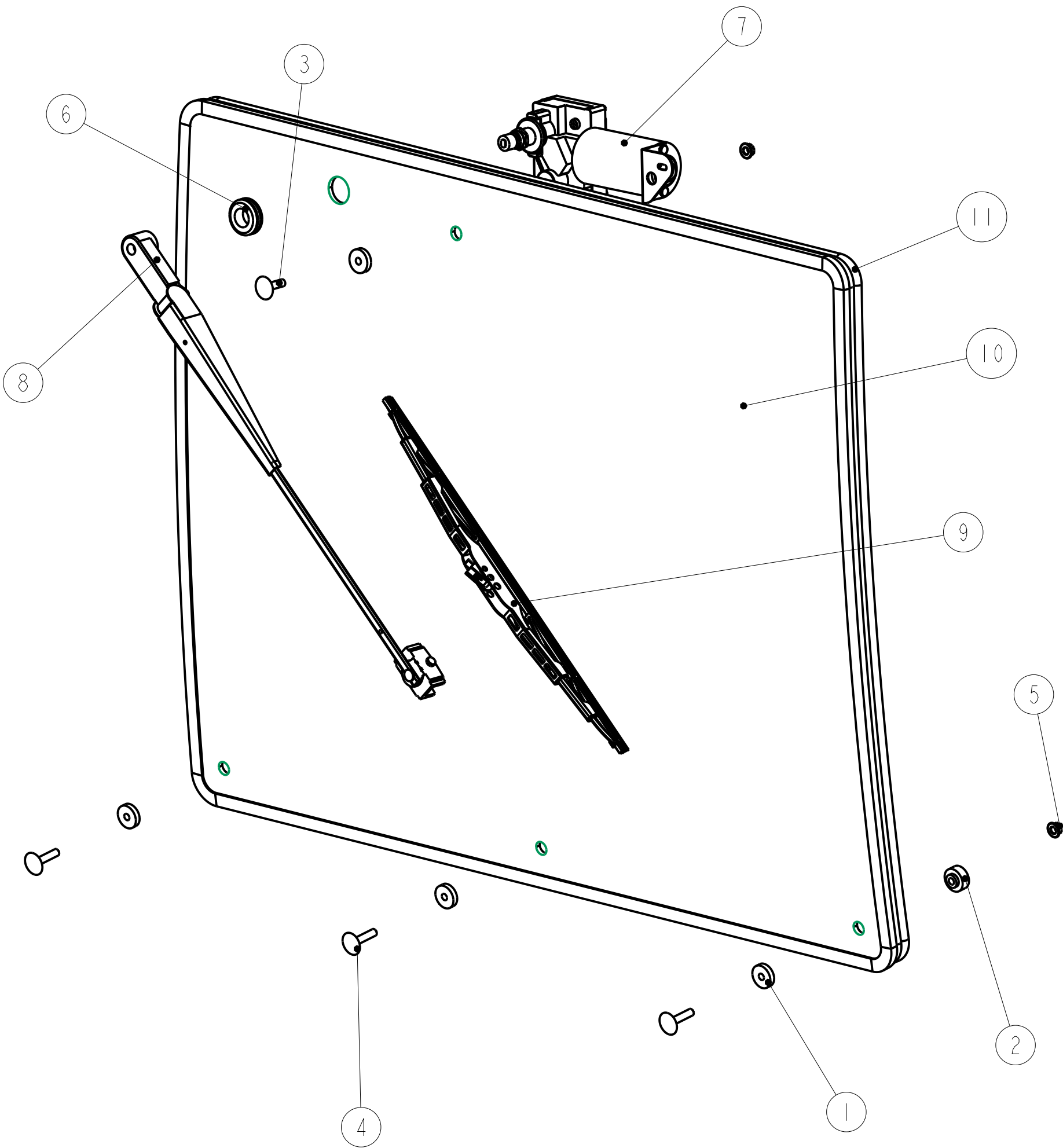
Notice of Confidentiality

This material is property of Tektite Manufacturing Inc and is not to be used by the recipient for any purpose other than the purpose for which it was transmitted. The material remains the property of Tektite and shall be returned upon request. The material may not be reproduced or disclosed to third parties without the written consent of Tektite.

Tolerances:  
Unless otherwise specified  
X.X = ±1/16"  
Angular = ± 1.0°

Req'd:	CNC:	Description:		
1 req		LH Door Assembly		
Drawn By:	Date:	Units:	File Name:	
	2025-02-27	Imp.	G1200-ASM-06_OP	
Checked By:	Date:	Size:		
		B		

Index	Service Part #	File Name	Description	Qty
1	A00-0013	TEKT-0009	5MM Bushing	5
2	A00-0014	TEKT-0092	Thick Bushing	3
3	A00-0019	STEP-BOLT1-4X1	Step Bolt, 1/4" x 1", MB	1
4	A00-0020	STEP-BOLT1-4X1-1-4	Step Bolt, 1/4" x 1 1/4", MB	3
5	A00-0021	FLANGE-NUT-1-4	Flange Nut, 1/4", YD	4
6	A00-0033	315-080	Rear Wiper Shaft Grommet	1
7	A00-0043	TEKT-0286	WWF Wiper Motor 1" Shaft	1
8	A00-0429	TEKT-ASM-074	WWF, Adjustable Radial Arm, J-Hook, Long	1
9	A00-0430	TEKT-ASM-073	Wiper Blade, 16", J-Hook	1
10	G01-0005	G1200-018	Windshield Glass	1
11	G01-0013	G1200-086	Windshield Seal	1



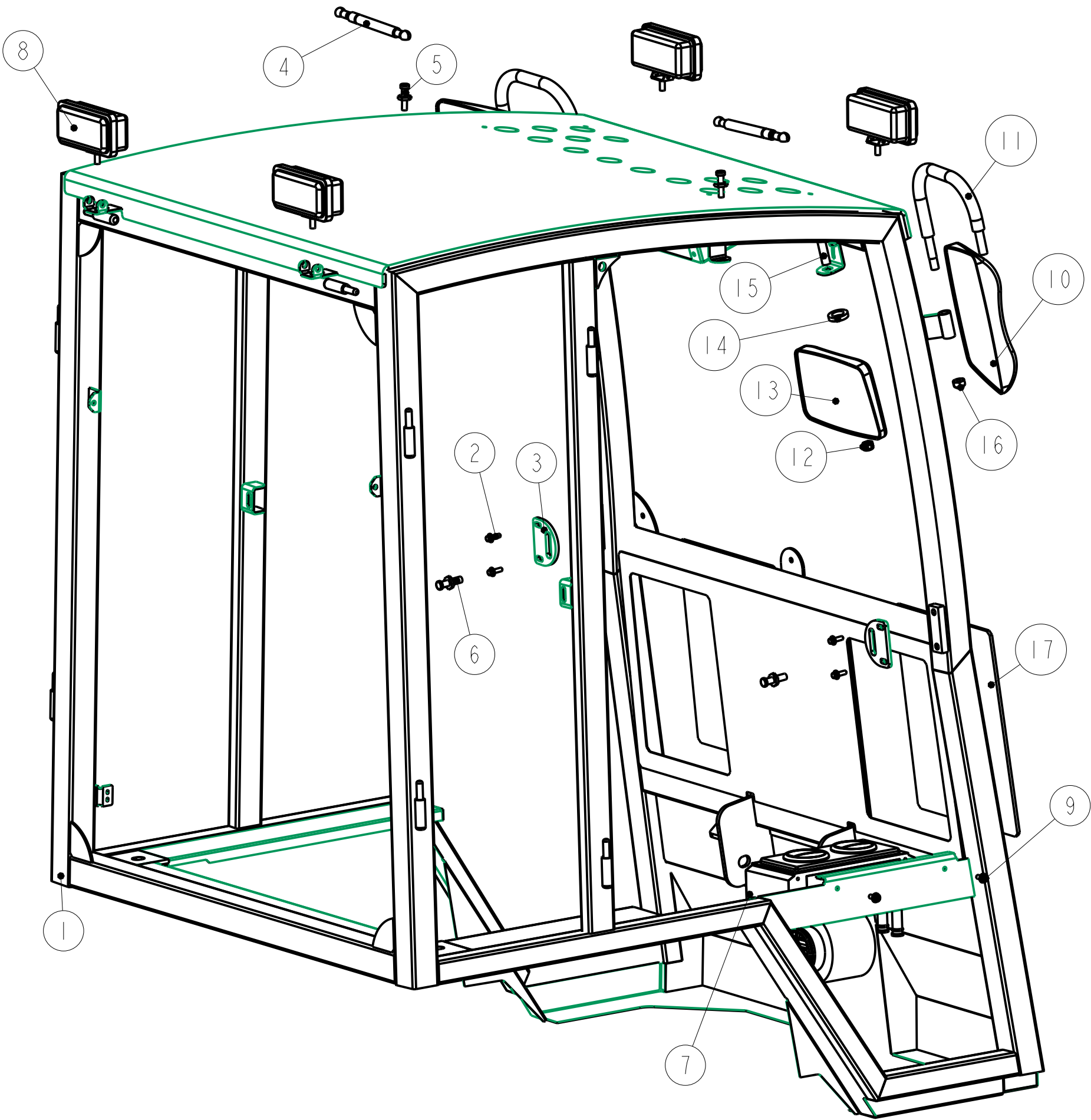
Notice of Confidentiality

This material is property of Tektite Manufacturing Inc and is not to be used by the recipient for any purpose other than the purpose for which it was transmitted. The material remains the property of Tektite and shall be returned upon request. The material may not be reproduced or disclosed to third parties without the written consent of Tektite.

Tolerances:  
Unless otherwise specified  
X.X = ±1/16"  
Angular = ± 1.0°

Tektite Manufacturing Inc. 427 Buffalo Str, Box 639, Winkler MB, R6W 4A8, Canada				
Req'd: 1 req	CNC:	Description: Windshield Assembly		
Drawn By:	Date: 2025-02-27	Units: Imp.	File Name: G1200-ASM-09_OP	
Checked By:	Date:	Size: B		

Index	Service Part #	File Name	Description	Qty
1		G1200-ASM-14		1
2	A00-0023	FLANGE_BOLT_1-4X3-4	Flange Bolt, 1/4" x 3/4", YD	4
3	A00-0061	TEKT-0021	Striker Mounting Plate	2
4	A00-0084	TEKT-0070	Gas Shock	2
5	A00-0085	TEKT-0069	Gas Shock Stud	2
6	A00-0101	STRIKER-PIN	Striker Pin	2
7	A00-0241	TEKT-0280	KALORI, Heater Steel	1
8	A00-0371	TEKT-0175	New LED Work Light (Blazer Int'l)	4
9	A00-0496	SCREW-14X3-4	Tapping Screw, No. 14 x 3/4"	2
10	A00-0519	TEKT-0244	Rectangular Mirror	2
11	A00-0520	TEKT-0243	Mirror Bracket Bar	2
12	A00-0521	M12X1.75-NYLOCK-NUT	Nylon Lock Nut, M12 x 1.75	3
13	A00-0535	TEKT-0249	Rectangular Interior Mirror	1
14	A00-0536	TEKT-0250	Spacer For Interior Mirror	1
15	A00-0537	CARRIAGE_BOLT_M12X50	Carriage Bolt, M12 x 50	1
16	A00-0552	M12X18_LOCK-NUT	M12 x 1.75 Crimp Lock Nut	2
17	G01-0006	G1200-060	Lower Front Window Glass	2
18	G01-0017	G1200-088	Roof Upholstery	1



Tektite Manufacturing Inc.

427 Buffalo Str, Box 639, Winkler MB, R6W 4A8, Canada

Notice of Confidentiality

This material is property of Tektite Manufacturing Inc and is not to be used by the recipient for any purpose other than the purpose for which it was transmitted. The material remains the property of Tektite and shall be returned upon request. The material may not be reproduced or disclosed to third parties without the written consent of Tektite.

Tolerances:  
Unless otherwise specified  
X.X = ±1/16"  
Angular = ± 1.0°

Req'd: <b>1 req</b>				CNC:				Description: <b>Cab Assembly Breakdown</b>			
Drawn By:				Date: <b>2025-03-06</b>				Units: <b>Imp.</b>		File Name: <b>G1200-ASM-15</b>	
Checked By:				Date:				Size: <b>B</b>			