

Jacobsen AR-530 ROPS

** Shown with optional Golf Ball Mesh Package



Jacobsen AR-530 ROPS

This ROPS is designed and built to fit the Jacobsen AR-530.

Designed and Built by:

Tektite Manufacturing Inc:

427 Buffalo Street

P.O. Box 639

Winkler, MB

R6W 4A8

Canada

PH: 204-331-3463

Fax: 204-331-4159

sales@tektite.ca

One year standard product warranty provided by Tektite.



Caution

** Please read installation instructions and follow all safety statements before attempting to install this product.

** This ROPS is heavy. An over-head hoist or high lift forklift will be needed to lift this cage over the machine. It is recommended that a minimum of two people participate during the installation procedure.

** A copy of this installation manual should be kept with the machine operating manuals.



DO NOT PROCEED FURTHER UNTIL YOU HAVE READ THE INFORMATION BELOW

- 1) Always wear personal protective equipment**
- 2) A minimum of two people is necessary to safely install the cab**
- 3) This ROPS cab is heavy. A lift assist device such as an overhead hoist or high lift forklift is required.**
- 4) Ensure your work area is well ventilated. The installation requires the starting of the tractor which will produce dangerous carbon monoxide fumes.**
- 5) Read through the entire installation manual first.**
- 6) Follow the installation instructions in order.**
- 7) Reading the operators manual prior to using the ROPS cab.**



Tektite Limited Warranty

Tektite Manufacturing Inc. ("Tektite") warrants to the original purchaser (the "Claimant"), that Tektite products will be free from defective materials or workmanship, under normal use and service, for a period of (1) full year from the original invoice date. Tektite's liability under this Limited Warranty is limited to the repair or (at the discretion of Tektite) the replacement of those components of its products, which were manufactured by Tektite that are defective in materials or workmanship. Tektite shall have no liability under this Limited Warranty unless Tektite is notified of the defect during the stated Warranty Period.

Limitations and Exclusions: Tektite has no responsibility to a Claimant under this Limited Warranty or on any other basis for any of the following:

- a) defects caused, in whole or in part, by accident or misuse, negligence or failure to maintain the product or component;
- b) products or components sold to a customer on an "as is" basis;
- c) wiper blades, light bulbs, fuses, clear vinyl or other consumables;
- d) glass where the point of failure has not been preserved intact and delivered to Tektite for analysis of the cause of the failure;
- e) products or components which have been modified after shipping from Tektite to its customer;
- f) transportation charges for returned, repaired or replacement items;
- g) defects that are subject of a Tektite initiated recall where the Claimant fails to comply with the terms of the recall notice that comes to the attention of the Claimant;
- h) components of Tektite products that are manufactured by third parties (Tektite's only obligation in relation to such components shall be to accord to the Claimant the benefit of any transferable warranty accorded to Tektite by third party manufacturer);
- i) defects in workmanship or materials in products or components that are repaired or replaced by Tektite unless Tektite is notified of the new defect within the Warranty Period that applied to the original product or component that has been repaired or replaced;
- j) defects that result, in whole or in part, from inadequate engineering or specifications provided to Tektite by its customer;
- k) any actual or alleged deficiency in technical or engineering services or advice provided by Tektite to its customer whether provided for valuable consideration or otherwise;
- l) consequential damages, or any other damages whether foreseeable or not, resulting from the defect or any delay in remedying the defect;
- m) any breach or alleged breach of any implied warranty of merchantability or fitness for particular purpose of use;
- n) defects or part failure due to misuse or failure to follow recommended cab installation procedures; and
- o) travel expenses, including mileage.

This Limited Warranty expresses the entire obligation of Tektite, its officers, directors, agents and employees, to its customer or any Claimant in respect of any defect in workmanship, or materials of any product or component sold or manufactured by Tektite whether on grounds of breach of contract, negligence or other tortious liability, breach of express or implied warranty or other basis in law of any jurisdiction.

Acceptance by a customer of delivery of products of Tektite constitutes acceptance of this Limited Warranty in lieu of all other warranties express or implied including without limitation all implied warranties of merchantability or fitness for particular purpose or use and constitutes acceptance by customer of the exclusions and limitations of the liability of Tektite set out above. Once received, the cab should have ALL exterior cardboard, Styrofoam wrapping removed for immediate inspection of product to ensure that no damages have occurred during transportation. Outer coverings should stay off the cab and the cab be stored indoors in a controlled environment. The warranty card must be completed and returned to Tektite.

Warranty claims should be reported to parts@tektite.ca. A warranty claim form and instructions will be provided at this time. Warranty work not pre-authorized by Tektite may not be covered by this warranty agreement. Labor rate and time allowances are fixed by Tektite. Approved warranty claims will be issued in the form of credits applied to customer account.

Tektite Manufacturing Incorporated thanks you for purchasing a Jacobsen AR-530 ROPS! Tektite has worked very hard to design and build this ROPS product and we hope that it provides you with many years of protection.

Tektite's products are designed to provide safe and dependable service during operation when they are properly maintained according to the instructions. Please read this installation manual carefully before installing and using this product.

The photos/illustrations provided in this manual may not provide all the detail needed, and are for reference only.

All directions provided are from the reference point of the tractor seat facing the steering wheel. All left and right references are from this view point.

For reference, please fill in the information below. This will assist your dealer in providing service for this product. It is advisable that this information be provided to your insurance company as well in the event that the tractor is lost or damaged.

Vehicle Model: _____

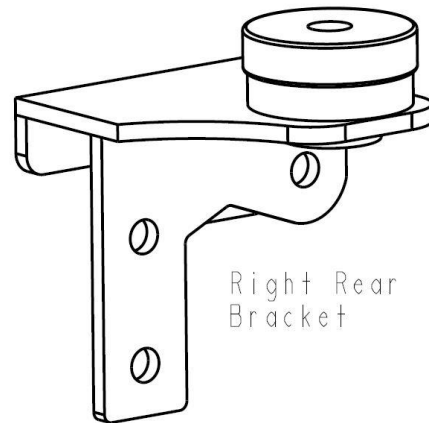
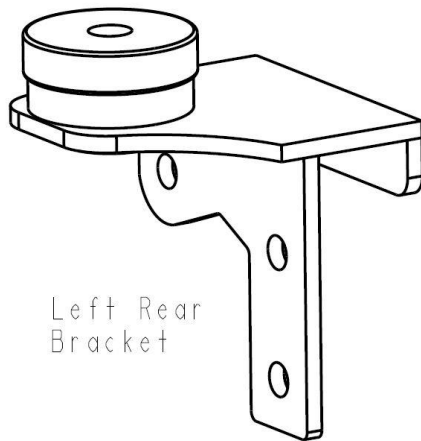
Tektite Serial Number: _____

Date of Purchase: _____

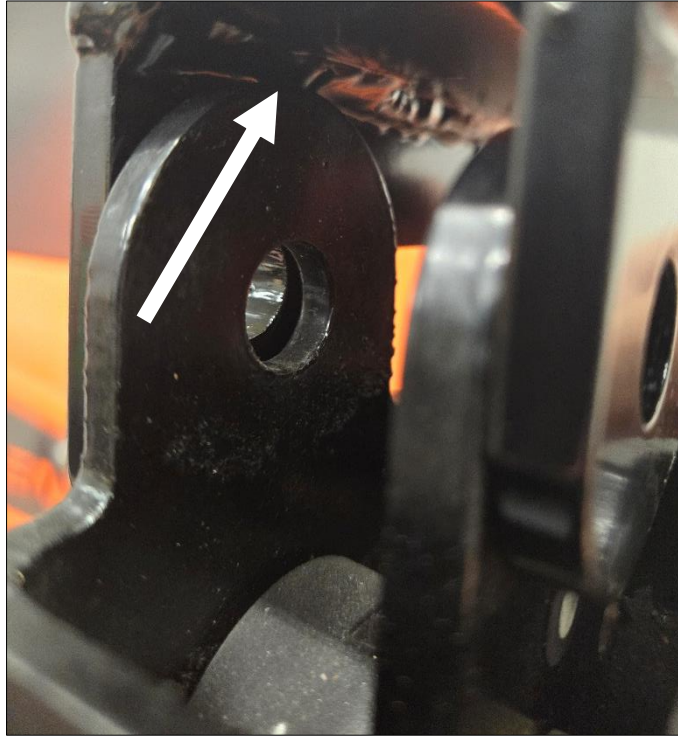
Dealer Name: _____

Standard Parts List:

Description	Qty
Bolt, Hex, 5/8" x 3", Gr. 8, YD	2
Bolt, Flange, 1/2" x 1 1/2", Gr. 8, YD	2
Bolt, Hex, 1/2" x 1", Gr. 8, YD	4
Bolt, Hex, 1/2" x 2 1/2", Gr. 8, YD	2
Nut, Flange, 5/8", Gr. 8, YD	2
Washer, Heavy, 1/4" Flat	2
Nut, Flange, 1/2", Gr. 8, YD	8
Isolator (pre-installed)	2
Rear Brackets	L&R

**Installation Instructions:**

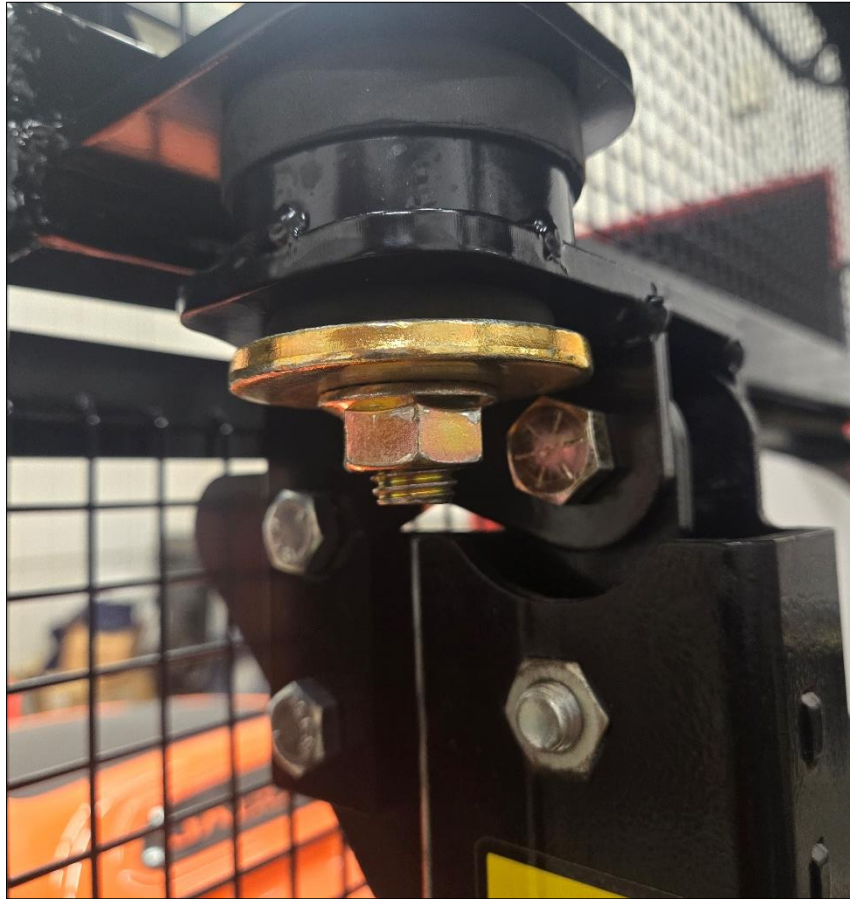
- . Un-bolt and remove the upper hoop portion of the 2-post ROPS structure from the tractor.
- . It will be necessary to sand down the very top of the 2-post ROPS tab to provide clearance for the rear mounting bracket. See below. First run off brackets had interior weld.



. Take the left rear bracket and position into place where the left side upper hoop of the 2-post structure was located. Use provided 1/2" x 1" hex bolts and loosely bolt the bracket into place.



. Take the right rear bracket and position into place where the right side upper hoop of the 2-post structure was located. Use provided 1/2" x 1" hex bolts and loosely bolt the bracket into place.



- . Open the left and right and right door frames if equipped with mesh.
- . Use a lift strap or chain and prepare to lift the ROPS off of the shipping pallet. Use an overhead hoist or forklift, and connect the straps/chain together. Un-bolt the ROPS from the shipping pallet and lift straight up.
- . Position the ROPS directly over the machine and slowly lower down until the mount plates are touching the rubber isolators.
- . Use the provided 5/8" x 3" hex bolts, heavy flat washer, and flange nuts for each isolator fastener. Ensure that the flat washer is on the bulged out rubber side of the mount to ensure correct fastening procedure. For rear fasteners, the washer goes directly under the bracket as shown in the photo above.
- . Close the doors.

. Attach a strap to front crossmember and rear of ROPS and apply tension so that the doors are properly aligned. Once aligned, mark and drill $\frac{1}{2}$ " holes through the operator platform/plastic at the rear of the front mount plate. Use provided $\frac{1}{2}$ x $1 \frac{1}{2}$ " bolts and nuts to fasten into place.



. Release strap and remove.

. Once all fasteners are started, the $\frac{5}{8}$ " bolts can have 205 ft-lbs of torque applied. The $\frac{1}{2}$ " fasteners can have 90 ft-lbs or torque applied.



. Remove lift straps and lift bolts from ROPS.

If ROPS has electrical components installed, proceed with the following step.

. Take red power and black ground wires that are at the bottom of the right rear tube and route along into the engine bay. Connect the black ground wire to the grounding block in the engine bay. Connect the red power wire to the constant power source on the alternator. There are fuses for power draw protection located behind the switch plate in the ROPS.

**NOTE:**

If structure is equipped with a Golf Ball Protection Package, it may be necessary to adjust the door latch after installation is complete. The striker pin, door latch, and striker mounting plate may need to be loosened and adjusted slightly after install due to the frame flexing slightly during the install.