

John Deere 2032R / 2038R MY17 and newer ROPS Cab



** Shown with optional equipment

Deere JD2038-019 ROPS Cab

This ROPS cab is designed and built to fit:
John Deere 2032R and 2038R, model year 2017 and newer.
Options must be specified at time of order to ensure correct brackets and shielding
are sent with the unit, including STD, TLB or SCV, mower or loader.

Designed and built by:

Tektite Manufacturing Inc:
P.O. Box 639, 427 Buffalo Street
Winkler, MB, Canada
R6W 4A8
PH: 204-331-3463
parts@tektite.ca

One-year standard product warranty provided by Tektite Manufacturing Inc.
www.tektite.ca / www.tektitecabs.com



DO NOT PROCEED FURTHER UNTIL YOU HAVE READ THE INFORMATION BELOW.

- 1) Always wear personal protective equipment.
- 2) A minimum of two people is necessary to safely install the cab.
- 3) This ROPS cab is heavy. A lift assist device such as an overhead hoist or high lift forklift is required.
- 4) Ensure your work area is well ventilated. The installation requires the starting of the tractor which will produce dangerous carbon monoxide fumes.
- 5) Read through the entire installation manual first.
- 6) Follow the installation instructions in order.
- 7) Reading the operators manual prior to using the ROPS cab.

Tektite Manufacturing Incorporated thanks you for purchasing a John Deere 2032R / 2038R ROPS cab! Tektite has worked very hard to design and build this ROPS product and we hope that it provides you with many years of protection.

Tektite's products are designed to provide safe and dependable service during operation when they are properly maintained according to the instructions. Please read this installation manual carefully before installing and using this product.

The photos/illustrations provided in this manual may not provide all the detail needed and are for reference only.

All directions provided are from the reference point of the tractor seat facing the steering wheel. All left and right references are from this viewpoint.

For reference, please fill in the information below. This will assist your dealer in providing service for this product. It is advisable that this information be provided to your insurance company as well in the event that the tractor is lost or damaged.

Vehicle Model: _____

Tektite Serial Number: _____

Date of Purchase: _____

Dealer Name: _____

Parts List Standard Cab:

Mounting Parts Bag:

Description	Qty
Structural Washer, 1/4" thick	4
Bolt, Hex, 5/8" x 3", Gr. 8, YD	4
Nut, Flange, 5/8", Gr. 8, YD	4
Hex Bolt, 3/4" x 1 1/2", Gr 8, YD	6
Flange Nut, 3/4", Gr. 8, YD	6
Bolt, Hex, 1/2" x 4 1/2", Gr. 8	2
Front Bracket Spacers (No loader only, 1/2")	6
Bolt, Flange, M12 x 35mm, Gr. 10.9, YD (No loader only)	6
Bolt, Flange, 1/4" x 1/2", YD	2
Nut, Flange, 1/4", YD	2
Wire Loop, 1/4"	2
Wire Loop, 3/8"	2
Zip Ties, Standard	4
NDAX, 1" x 1", 8" Length	2

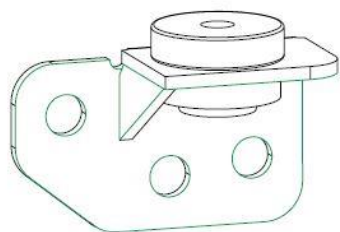
Loose Components:

Description	Qty
Chassis Isolator, Rubber, 5/8" (pre-installed)	4
Hood Shield (Pre-installed)	1
Rear Shield (Pre-installed, STD, TLB or SCV must be specified)	1
Under Seat Shield (pre-installed rubber)	1
Left Front Lower Pedal Shield (Pre-installed)	1
Right Front Lower Pedal Shield (Pre-installed)	1
Front Cab Brackets (Loader or Mower Compatible – see diagrams)	L&R
Rear Cab Brackets	L&R
Convoluted Loom, 1/2"	11 Feet
LH Pedal Floormat	1

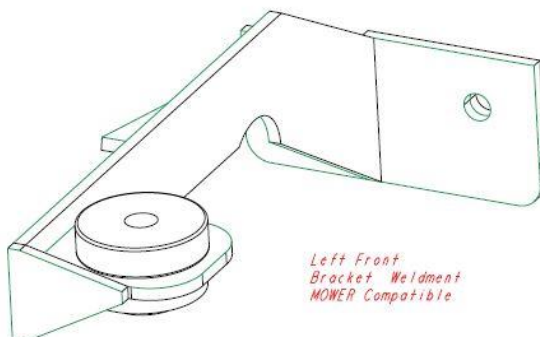
Parts List Heater:

Description	Qty
Straight fitting, 3/8NPT x 3/8" barb	1
HS-6 Hose clamps	2
Elbow fitting, 3/8NPT x 3/8" barb	1
Rad Hose Splicer, 1 1/8"	1
HS-24 Hose clamps	2

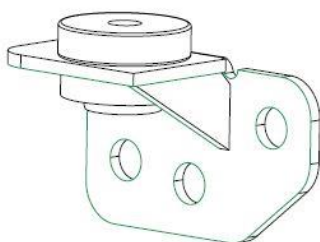
Parts – for tractors equipped with Mid Mount Mower



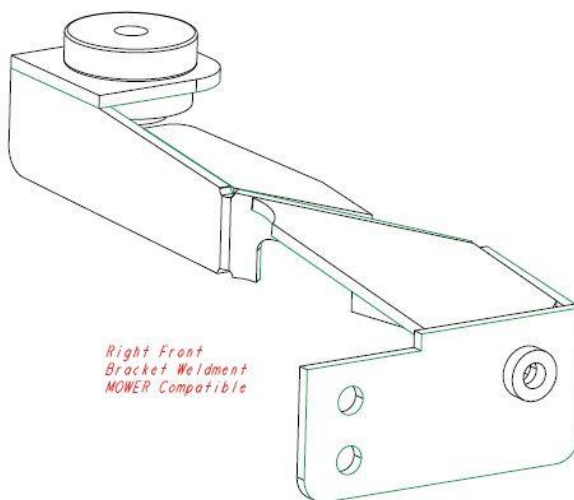
*Left Rear
Bracket Weldment*



*Left Front
Bracket Weldment
MOWER Compatible*



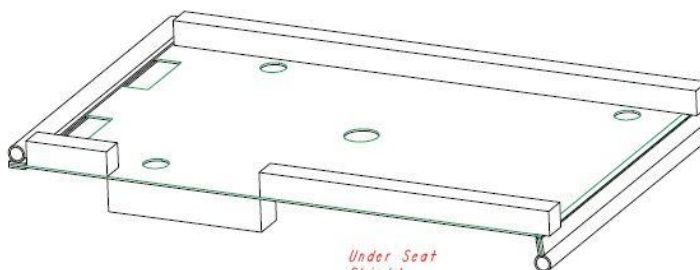
*Right Rear
Bracket Weldment*



*Right Front
Bracket Weldment
MOWER Compatible*

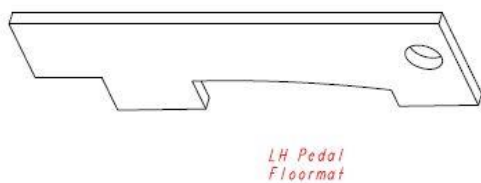
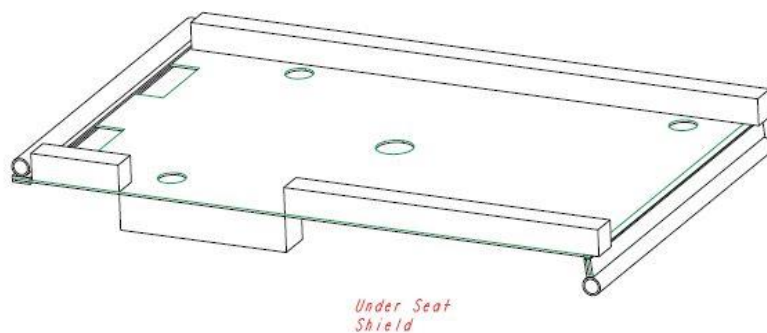
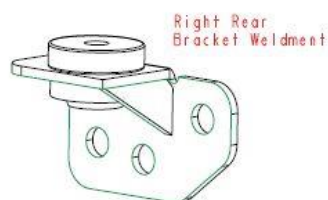
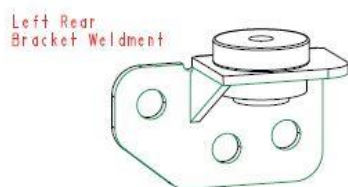
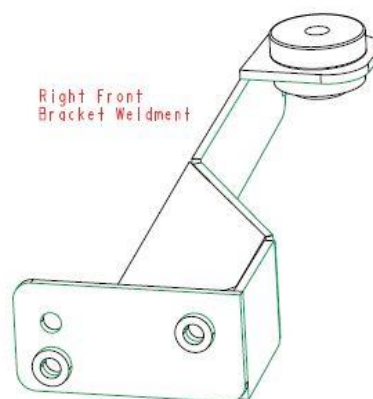
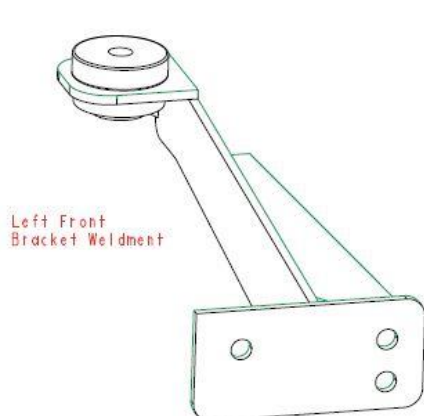


*LH Pedal
Floormat*



*Under Seat
Shield*

Parts – for tractors equipped with Loader



Standard Cab Installation Instructions:

Park the tractor in a well-ventilated area, put the loader down along with all tractor attachments.

Disconnect the tractor battery.

Un-bolt and remove the upper hoop of the 2-post ROPS.

Remove the SMV sign from the back of the tractor seat.

Remove the rear shield from the cab.

Position the SMV sign onto rear shield. Mark onto the SMV sign the two holes that are in the rear shield. Drill two $\frac{1}{4}$ " holes through the rear shield.

Fasten the SMV sign to the rear shield with the provided $\frac{1}{4}$ " x $\frac{1}{2}$ " flanged bolts and flange nuts.



Disconnect the left 4-way flasher light harness from the tractor. Un-bolt and remove the light from the 2-post ROPS.

Disconnect the right 4-way flasher light harness from the tractor. Un-bolt and remove the light from the 2-post ROPS.

IF CAB is equipped with front and/or rear washer kits, rear brackets need to be installed AFTER cab is lowered down onto the tractor due to clearance issues with washer bottles.

Take the left rear bracket and position against the 2-post ROPS. Using the provided $\frac{3}{4}$ " x 1 $\frac{1}{2}$ " hex bolts and flange nuts, loosely fasten bracket into place.

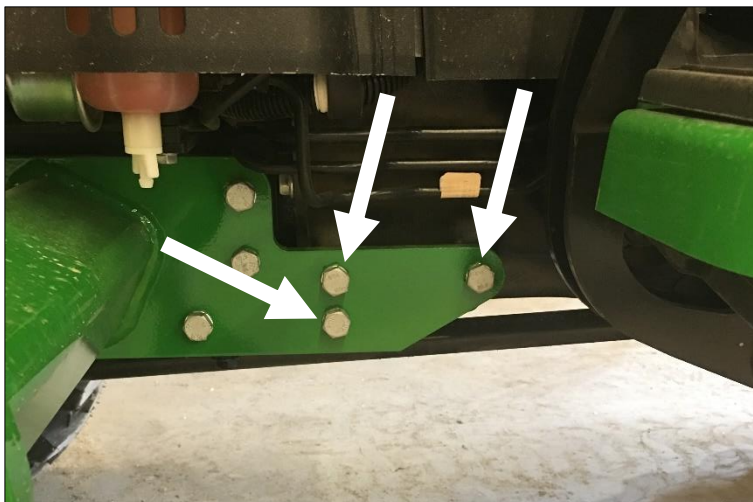


Take the right rear bracket and position against the 2-post ROPS. Using the provided $\frac{3}{4}$ " x 1 $\frac{1}{2}$ " hex bolts and flange nuts, loosely fasten bracket into place.



If the tractor is not equipped with a front-end loader, no loader spacers are required behind the front cab brackets.

If the tractor is equipped with front end loader, remove the rear three bolts in the sub-frame bracket that attaches it to tractor.



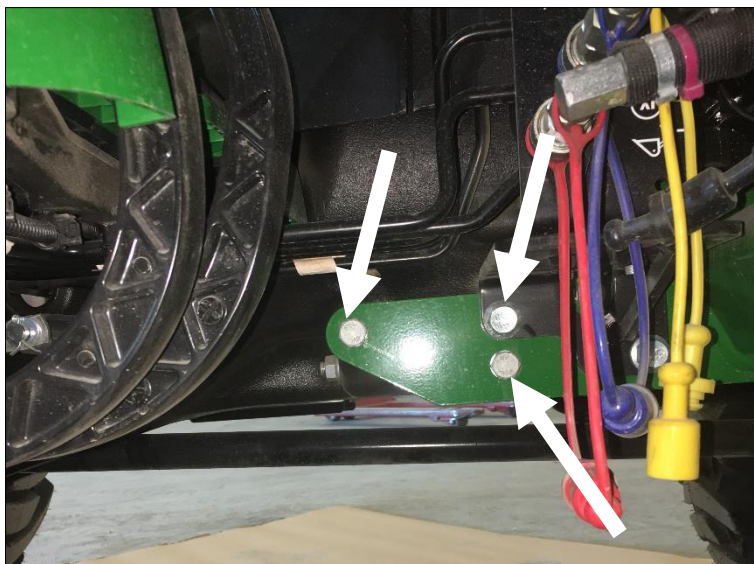
Take the left front bracket and position directly over the loader sub-frame. Use the factory hardware to fasten bracket into place.



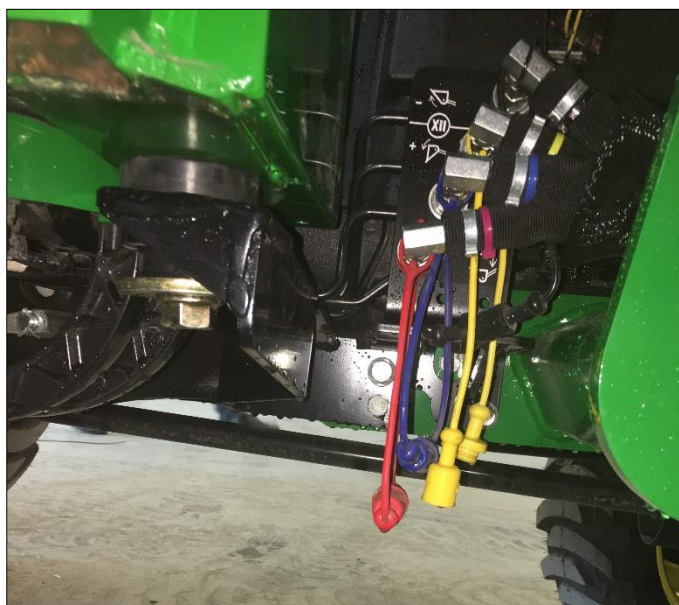
Note if the tractor is equipped with a mid mount mower: Take the left front bracket and position over the inside mower mount plate. Use the factory hardware to fasten bracket into place.



For the right front bracket, remove the rear three bolts on the loader sub-frame. One the of the fasteners retains the hydraulic mount plate.



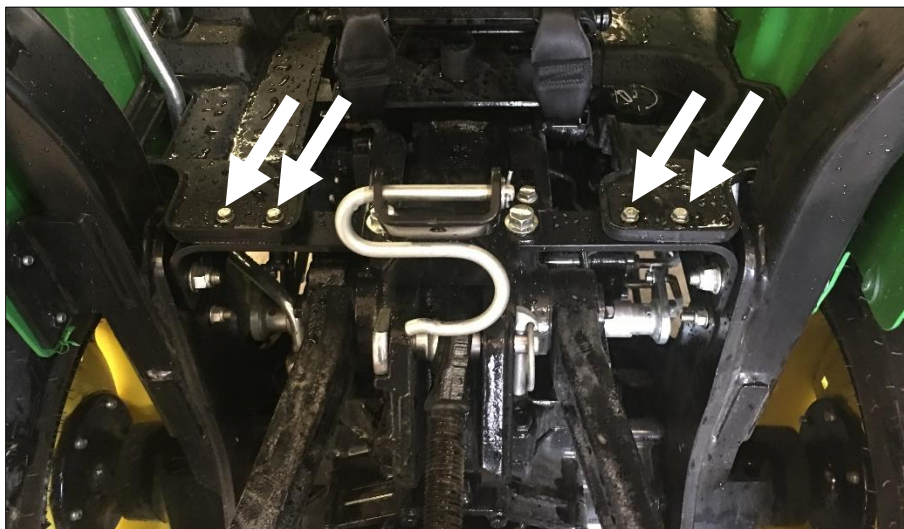
Place the right front bracket over the sub-frame and fasten into place with the factory hardware.



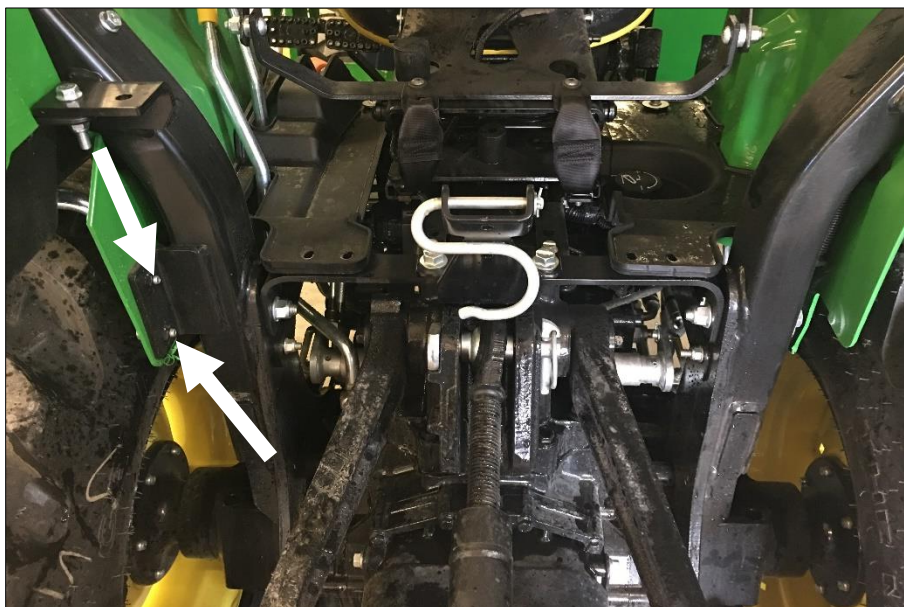
Note if the tractor is equipped with a mid mount mower: Place the right front bracket over the loader sub-frame, sliding around the mower mount to get into place. Fasten into place with the factory hardware.



Locate the two sets of fasteners shown below.



Remove fasteners for now.

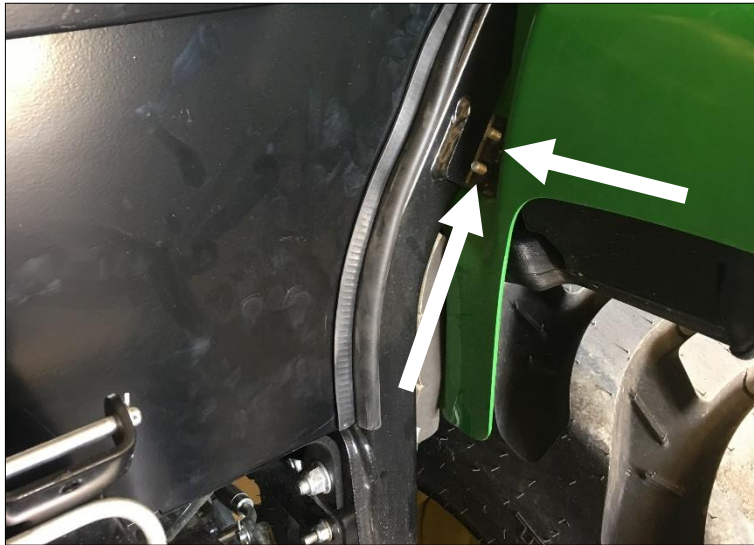


On the left side of the lower 2-post ROPS, loosen the bolts shown above.

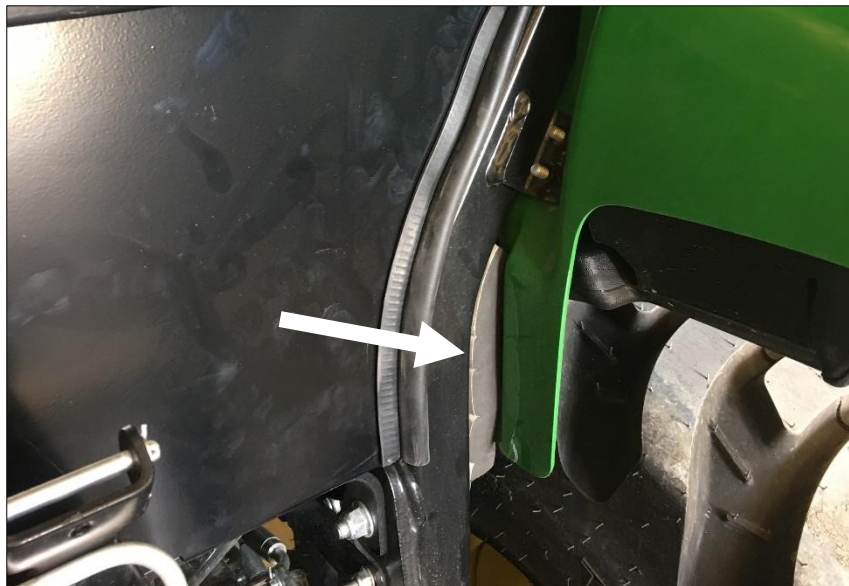
Take one of the provided 1" x 1" NDAX 8" long pieces and slide in between the 2-post ROPS and the plastic fender as shown in the next photo.



Loosen the two fasteners shown on the right side of the 2-post ROPS fastening to the fender shown below.



Take the remaining 1" x 1" NDAX 8" long piece and slide between the fender and the 2-post ROPS as shown below.



Un-bolt and remove the seat along with the seat track from the tractor. Disconnect the seat harness.

Position the under seat shield over the seat track mounting rails, and ensure there is a good seal all around. Pull the seat harness through the hole in the shield. Re-install the seat.



Return to cab to start preparing for cab installation. Un-hook the gas shock on the left door and remove both doors from the cab. Slide a flat screwdriver underneath the small clip on the end cap that must be **PULLED UP** in order to **POP** the shock off the stud. The shock will **RELEASE** very easily when this is accomplished. Lift door straight up and off of the cab and put aside for now.



Repeat for the right door as well.

Un-bolt and remove the cab hood shield, left kick panel shield, right kick panel shield. Save for re-installation after the cab is installed.

The cab now needs to be prepared for lifting onto tractor. You can use lift bolts that are provided, take the provided $\frac{1}{2}$ " x 4 $\frac{1}{2}$ " lift bolt and install into weld nut located at top rear corner of door opening on both the left and right sides. Or, if using a lifting strap, you can route the strap underneath the upper cab crossmember at where the gas shock tab is located to get a better centering of the weight when lifting.

Use lift strap or chain attached to overhead hoist and prepare to lift cab. Un-bolt rear shipping bracket and the remove fastener at front mount to free cab from shipping pallet. Lift straight up and position over the tractor.

If cab has washer bottle kits installed, rear brackets need to be installed AFTER cab is lowered down. To clear the rear of the 2-post ROPS weldment, cab will need to swing back behind the rear with washer bottles installed on cab.

SLOWLY lower cab down onto tractor. Use the provided $\frac{5}{8}$ " x 3" hex bolts, $\frac{1}{4}$ " flat washer, and flange nuts at each isolator location. Flat washer goes at the bottom above the flange nut.



If wiper washer kits are installed, install rear brackets now with provided $\frac{3}{4}$ " x 1 $\frac{1}{2}$ " hex bolts and flange nuts. Use caution as rear window is very close to the brackets.

Once all fasteners are started, remove lift strap/chain and lift bolts from cab if used.

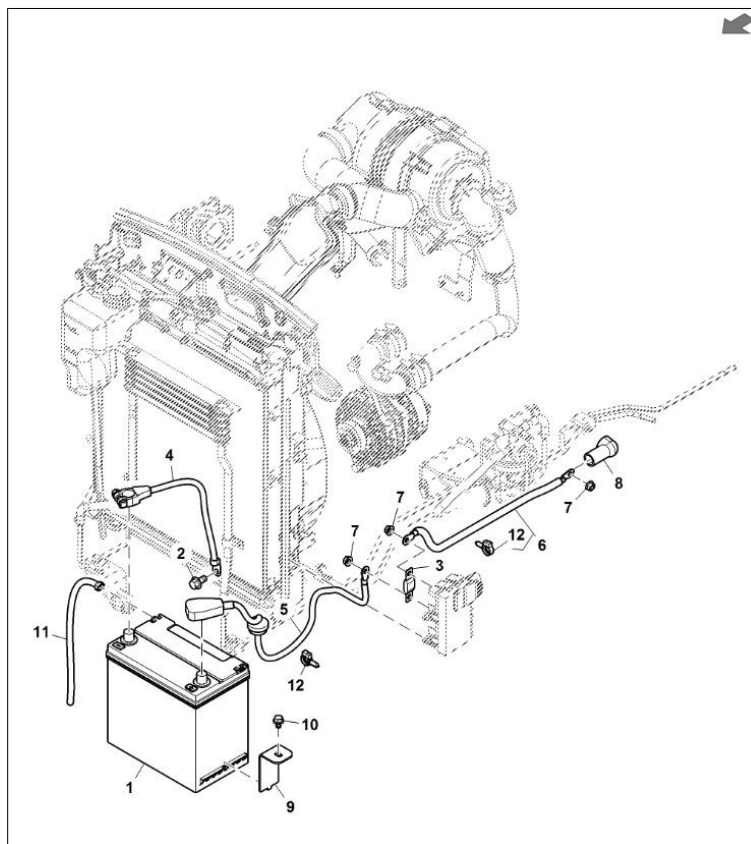
For 5/8" fasteners, apply 205 ft-lbs of torque. For M12 fasteners apply 97 ft-lbs. For the rear 3/4" fasteners apply 300 ft-lbs.

Route the main power harness from the left front A-post of the cab towards the engine bay. Open hood and remove the left and right hood cowl side panels.

Locate the battery at the front of the tractor. The power and ground connections will be made here.

Route the red wire in the harness to the positive battery terminal. Use the provided loop connector. Shorten the wire if necessary, then solder loop to wire. Connect loop to the red terminal on battery.

Route the black wire to the negative battery terminal. Use the remaining loop connector. Shorten wire if necessary, then solder loop to wire. Connect to negative terminal.

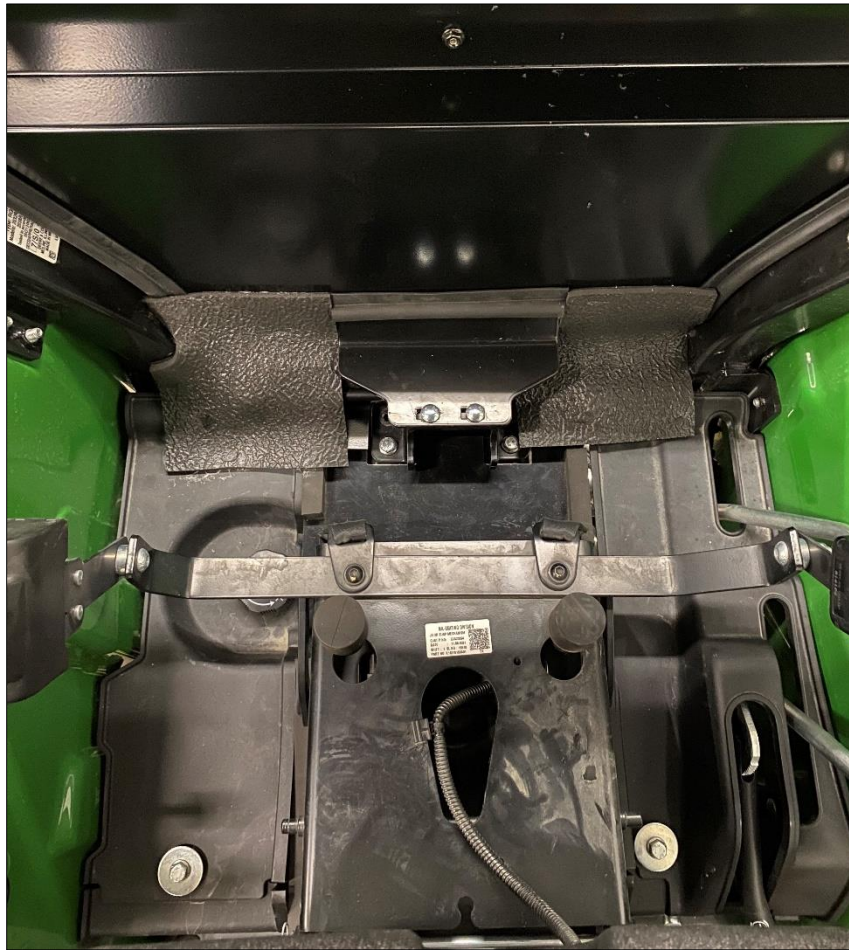


Take the rear shield removed earlier. Slide the bottom bend of shield underneath the plastic seat mount (fasteners removed earlier), and then onto the outside of the cab. Fasten into place with original 3/4" bolts. Re-install four fasteners holding plastic seat mount. Picture shown next is for the standard cab.



Here is the rear SCV shield installed from interior. Glue floormat cover panels in after shield is installed.





Take the left lower pedal shield and position onto cab, ensure good fit against foot platform and the bell housing of the tractor. Fasten into place with the original hardware used earlier.



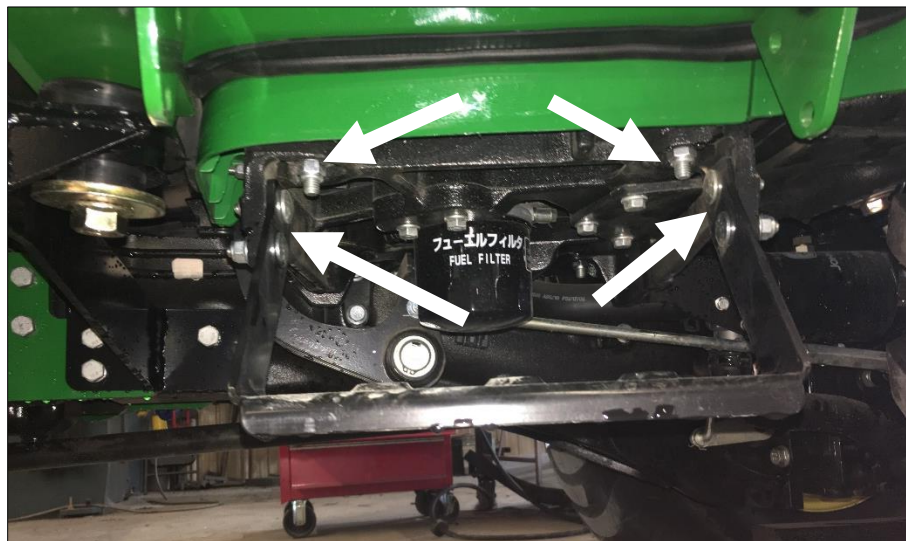
Take the right lower pedal shield and position on cab, ensure good fit against the foot platform and the bell housing of the tractor. Fasten into place with the original hardware used earlier.



Take the hood shield and slide over the hood. Fit is tight, so it may be necessary to use soapy water on the weather seal to make it easier to install. Use the knob bolts to fasten hood shield to the cab.



Locate the step on the tractor. Remove all four bolts fastening the step to the tractor. NOTE, the top two of the bolts need to have fasteners removed from the floorboard to allow the bolts to be completely removed.



Move the step to the weld plates on the cab. Fasten step to cab with factory hardware. Re-install floor-board bolts removed earlier.



Take the left rear flasher light and route the harness through the centre large hole in the C-post. Fasten light to the cab with factory hardware. Route harness wire down to main harness and re-connect to the tractor harness.

Repeat for the right rear flasher light.

Use provided convoluted loom for wires on the flasher lights.

For cabs equipped with the heater option, proceed with the following steps.

Drain tractor engine coolant.

Locate the lower rad hose, it needs to be cut. Find a nice straight section and cut and remove 1" of radiator hose. Install provided 1 1/8" rad splicer into open hose and clamp with provided HS-24 hose clamps. Use the provided elbow fitting on the rad hose splicer, ensure there is Teflon tape on the threads of the fitting prior to installation.

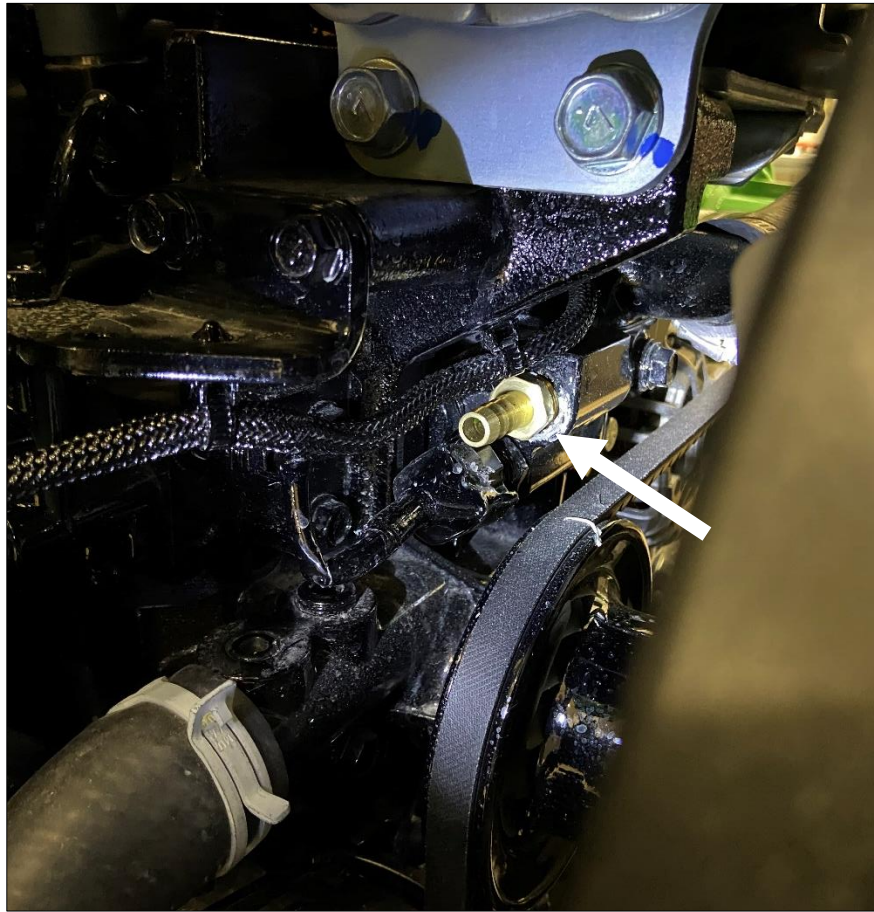


Locate the plug shown on the next page and remove.



Take the provided straight 3/8NPT x 3/8" barb fitting and install Teflon tape on the threads of fitting.

Screw fitting into the open port on the water pump housing.



Route the heater hoses from the right side of the cab, down and into the engine bay. Ensure that there no interference with hot or moving parts.

Route hoses to the fittings, then cut the hose. Connect one end of the hose to the first fitting with the provided HS-6 hose clamp.

Shorten the hose if necessary for the second fitting, then install. Use the provided HS-6 hose clamp.

Make sure all fittings are tight and are properly secured to the machine with the provided HS-6 hose clamps.

Re-fill the engine antifreeze.

Start the engine and turn the heater fan on. Remove the radiator cap and place a funnel into the radiator.

Fill the funnel with antifreeze and run the engine so that the thermostat will cycle a few times and suck coolant out of the funnel and into the system to remove the air bubbles in the coolant lines.

The engine needs to run for a few minutes and thermostat opens to purge all of the air from the heater system. The air at the louvres will blow VERY HOT AIR when this occurs. NOTE: ensure adequate fresh air ventilation in the work space you are in, carbon monoxide from the engine exhaust is deadly.

Cab heater installation is now complete!

Re-install the tractor side panels on the hood.

Close the hood.

Take provided LF pedal floormat and position onto left pedal shield, around mount bolt. Trim if necessary around moving pedals, then glue into place. 3M High Strength 90 aerosol is recommended.



To ensure a proper weather sealant, use a black silicone sealant around all small open cracks between the cab weather stripping and tractor components.

John Deere 2032R / 2038R MY17 and newer ROPS Cab



** Shown with optional equipment

Deere JD2038-019 ROPS Cab

This ROPS cab is designed and built to fit:
John Deere 2032R and 2038R, model year 2017 and newer.

Designed and built by:

Tektite Manufacturing Inc:
P.O. Box 639, 427 Buffalo Street
Winkler, MB, Canada
R6W 4A8
PH: 204-331-3463
parts@tektite.ca

One-year standard product warranty provided by Tektite Manufacturing Inc.
www.tektite.ca / www.tektitecabs.com



DO NOT PROCEED FURTHER UNTIL YOU HAVE READ THE INFORMATION BELOW.

- 1) Always wear personal protective equipment.
- 2) A minimum of two people is necessary to safely install the cab.
- 3) This ROPS cab is heavy. A lift assist device such as an overhead hoist or high lift forklift is required.
- 4) Ensure your work area is well ventilated. The installation requires the starting of the tractor which will produce dangerous carbon monoxide fumes.
- 5) Read through the entire installation manual first.
- 6) Follow the installation instructions in order.
- 7) Reading the operators manual prior to using the ROPS cab.

Tektite Limited Warranty

Tektite Manufacturing Inc. ("Tektite") warrants to the original purchaser (the "Claimant"), that Tektite products will be free from defective materials or workmanship, under normal use and service, for a period of (1) full year from the original invoice date. Tektite's liability under this Limited Warranty is limited to the repair or (at the discretion of Tektite) the replacement of those components of its products, which were manufactured by Tektite that are defective in materials or workmanship. Tektite shall have no liability under this Limited Warranty unless Tektite is notified of the defect during the stated Warranty Period.

Limitations and Exclusions: Tektite has no responsibility to a Claimant under this Limited Warranty or on any other basis for any of the following:

- a) defects caused, in whole or in part, by accident or misuse, negligence or failure to maintain the product or component;
- b) products or components sold to a customer on an "as is" basis;
- c) wiper blades, light bulbs, fuses, clear vinyl or other consumables;
- d) glass where the point of failure has not been preserved intact and delivered to Tektite for analysis of the cause of the failure;
- e) products or components which have been modified after shipping from Tektite to its customer;
- f) transportation charges for returned, repaired or replacement items;
- g) defects that are subject of a Tektite initiated recall where the Claimant fails to comply with the terms of the recall notice that comes to the attention of the Claimant;
- h) components of Tektite products that are manufactured by third parties (Tektite's only obligation in relation to such components shall be to accord to the Claimant the benefit of any transferable warranty accorded to Tektite by third party manufacturer);
- i) defects in workmanship or materials in products or components that are repaired or replaced by Tektite unless Tektite is notified of the new defect within the Warranty Period that applied to the original product or component that has been repaired or replaced;
- j) defects that result, in whole or in part, from inadequate engineering or specifications provided to Tektite by its customer;
- k) any actual or alleged deficiency in technical or engineering services or advice provided by Tektite to its customer whether provided for valuable consideration or otherwise;
- l) consequential damages, or any other damages whether foreseeable or not, resulting from the defect or any delay in remedying the defect;
- m) any breach or alleged breach of any implied warranty of merchantability or fitness for particular purpose of use;
- n) defects or part failure due to misuse or failure to follow recommended cab installation procedures; and
- o) travel expenses, including mileage.

This Limited Warranty expresses the entire obligation of Tektite, its officers, directors, agents and employees, to its customer or any Claimant in respect of any defect in workmanship, or materials of any product or component sold or manufactured by Tektite whether on grounds of breach of contract, negligence or other tortious liability, breach of express or implied warranty or other basis in law of any jurisdiction.

Acceptance by a customer of delivery of products of Tektite constitutes acceptance of this Limited Warranty in lieu of all other warranties express or implied including without limitation all implied warranties of merchantability or fitness for particular purpose or use and constitutes acceptance by customer of the exclusions and limitations of the liability of Tektite set out above. Once received, the cab should have ALL exterior cardboard, Styrofoam wrapping removed for immediate inspection of product to ensure that no damages have occurred during transportation. Outer coverings should stay off the cab and the cab be stored indoors in a controlled environment. The warranty card must be completed and returned to Tektite.

Warranty claims should be reported to parts@tektite.ca. A warranty claim form and instructions will be provided at this time. Warranty work not pre-authorized by Tektite may not be covered by this warranty agreement. Labor rate and time allowances are fixed by Tektite. Approved warranty claims will be issued in the form of credits applied to customer account.

Safety Precautions

Safety First

Read these instructions carefully. It is essential that you read the instructions and safety regulations before you attempt to assemble or use the features that are on this cab/ROPS.

Danger: Indicates an immediate hazardous situation which, if not avoided, will result in death or serious injury.

Warning: Indicates a potentially hazardous situation which, if not avoided, may result in death or serious injury.

Caution: Indicates a potentially hazardous situation which, if not avoided, may result in minor or moderate injury.

Important: Indicates that cab or property damage may result if instructions are not carefully followed.

NOTE: All products are designed to give safe, dependable service if they are operated and maintained according to instructions. It is the owner's responsibility to be certain anyone operating this product reads this manual, and all other applicable manuals, to become familiar with this cab and all safety precautions. Failure to do so could result in serious personal injury or cab damage. If you have any questions, consult your dealer. Read and understand this manual before operation.

NOTE: A safe operator is the best assurance against accidents. All operators, no matter how experienced they may be, should read this operator manual and all other related manuals before attempting to operate features in this cab/ROPS and operate the base tractor. Please read the following section and pay particular attention to all safety recommendations contained in this manual and those labelled on the cab and on the tractor.

General Safety

1. Never let an unqualified or untrained driver operate the tractor.
2. Keep a fire extinguisher, with ABC rating securely fastened in the ROPS. Maintain it and be familiar with its use.
3. Do not carry passengers.
4. Never operate the tractor in a closed building for a prolonged period. Ensure adequate ventilation is present, as engine exhaust fumes are poisonous and can kill.
5. Always keep sleeves, jackets or other loose clothing relatively tight and belted. Loose clothing may catch on moving parts and result in severe personal injury or death.
6. Provide a first-aid kit, securely attached inside of the ROPS for use in case of accident.
7. Never jump from the tractor. There is a danger of tripping or falling on protruding parts.
8. Use steps and hand holds when mounting and dismounting the tractor, or for servicing components too high to reach from the ground.
9. When seated in the ROPS, fasten seat belt before starting the engine. A proper seat belt must be worn at all times when using a ROPS.
10. Safety devices and shields are intended to protect operators from injury or death. Under no circumstances should they be modified, disabled or removed.

Operating Safety

1. Always operate the tractor controls while sitting in the operator's seat.
2. Lock seat in position and buckle seat belt before operating the tractor.
3. Avoid abrupt sharp turns at high speeds.
4. On sloped terrain, do not make sharp turns as machine stability could be compromised.
5. Operate the tractor smoothly, avoid abrupt starts and stops.
6. Keep all shields in place when operating the tractor.
7. Do not operate the tractor when you are tired, sick, or impaired.
8. Never operate the tractor in confined areas; visibility next to the tractor is reduced. Injury to bystanders or damage to the ROPS or equipment may result.

Safety

Carefully review the procedures given in this manual and the tractor operator's manual with all operators annually. It is important that all operators become familiar with, and follow safety precautions. Operating instructions must be given to everyone using the tractor before operation and at least once yearly thereafter in compliance with OSHA Regulations 1928.57 (United States).

Safe Operation on Rough Terrain

1. Drive the tractor slowly on hillsides and curves to eliminate the danger of tipping. Avoid slopes which are too steep for safe operation. Avoid sharp uphill turns.
2. Always drive slowly enough over rough ground or obstructions. Drive at speeds slow enough to ensure your safety.
3. When driving out of a ditch, gully, or up a steep hillside, engage the clutch slowly. Avoid sharp uphill turns.
4. When descending steep grades, select a sufficiently low gear to maintain control with minimum use of braking.
5. Use caution when driving near the edge of a ditch or gully. It may cave in, causing the tractor to roll over.
6. Be alert when operating near trees, slopes and around obstructions. Tree branches can cause damage to ROPS components.

Maintenance Safety

1. Remove mud, crop residue, chains, and tools from steps and operator's platform. They may interfere with pedal operation or entry/exit from tractor.
2. When servicing components are too high to reach from the ground use steps and handholds. Do not use fenders or shields that are not designed as steps.

Safe Highway Operation

1. Before operating the tractor on, or near, public roadways check with your local authorities for any local regulations that will affect you.
2. Equip towed implements with slow moving vehicle (SMV) signs when traveling on public roads.
3. Install additional lights on implement rear to safeguard against rear end collisions.
4. Use hazard warning flashers as required by law when transporting or driving on public roads. If the tractor had warning flashers removed when mounting the ROPS, they must be replaced prior to operation on public roads.
5. Keep to the right, yielding right-of-way traffic, especially if pulling implements. Pull off the road and stop to allow motorists to pass. Drive on the road shoulder, if permitted by law.
6. Use extreme caution when pulling heavy loads at road speeds. Avoid hard application of the tractor brakes at high speed.
7. Always drive slowly near curbs, approaches or ditches.
8. If equipped, ensure headlights are aligned so they will not blind the operators of oncoming vehicles. If the tractor is not equipped with turn signals and law requires them, install them prior to operating on or near public roads.
9. Use your turn signals, checking for traffic well in advance of turning. If the tractor is not equipped with turn signals and law requires them, install them prior to operating on or near public roads.

Safety Decals

1. Keep decals clean. Remove dirt with a wet clean cloth when necessary.
2. Replace safety decals if destroyed, missing, painted over or unreadable. If any safety decals are covered or obscured when the ROPS is mounted, it is recommended that you purchase replacement decals from the tractor manufacturer. Mount them in a readable location at, or near, their original location before operating the tractor.
3. New ROPS decals and tractor decals are available from your tractor dealer.

ROPS Safety

1. Install the ROPS in accordance with Tektite mounting instructions. Failure to do so may affect the ROPS ability to withstand a roll over.
2. If the ROPS is subjected to alteration, structural damage or involved in an over turn accident, the entire structure must be replaced. Failure to do so may result in injury or death in the event of a roll over.
3. If the tractor is not equipped with seat belts, purchase approved seat belts from the tractor manufacturer or Tektite prior to operating the tractor.
4. Always fasten seat belts prior to operating the tractor.
5. Always operate the tractor from the operator's seat.
6. Remove mud, crop residue, chains and tools from steps and operator's platform. They may interfere with pedal operation or entry/exit from the tractor.
7. Remove all loose chains, tools, and equipment from the operator's platform. Failure to do so may cause injury or death in the event of a roll over.
8. Do not install the ROPS on a tractor model that the ROPS is not designated for (compatible tractor designations are printed on the ROPS serial number plate). The ROPS is designed specifically for individual models to ensure ROPS requirements will be met. Installing the ROPS on a non designated tractor may result in injury or death.

Emergency Exits

The ROPS cab has two doors. Either one can be used during an emergency.

Operating Instructions

Important

The following section locates, identifies, and briefly describes the functions of all cab controls. All operators should familiarize themselves with control location and function prior to operating the tractor. Failure to do so may result in unsafe operation of the tractor and possible injury or death to operators and bystanders.

There is one switch plate located in the cab. The following switches are available, and their functionality is described.



Cab Switch Plate

1. Front Wiper Rocker Switch (standard)

Low position: Off

High position: On

Note: indicator light activates when wiper is on.

2. Rear Wiper Rocker Switch (not available on all models)

Low position: Off

High position: On

Note: indicator light activates when wiper is on.

3. Front Work Light Rocker Switch (standard)

Low position: Off

High position: On

Note: indicator light activates when work lights are on.

4. Rear Work Light Rocker Switch (optional)

Low position: Off

High position: On

Note: indicator light activates when work light is on.

5. Washer Momentary Switch (Front and Rear optional)

Low position: On

Mid position: Off

High Position: On

6. Beacon Rocker Switch (optional)

Low position: Off

High position: On

Note: indicator light activates when work lights are on.

7. Water Heater Fan Rocker Switch (standard)

Low position: Off

High position: On

Note: indicator light activates when heater is on.

Standard and optional features are individually fused, and the fuses can be accessed behind the plug in the middle of the switch-plate.

Cab Circuit Protection

The Tektite ROPS cab is wired to provide maximum protection against individual circuit overload. All optional components are fused internally behind the cab switch plate. Cab wiring is direct to the tractor battery. DO NOT leave options activated when tractor is not running as battery run down can occur.

Please note: Tektite does have a key switch power option to provide maximum protection against accidental battery rundown and circuit overload. A relay is ignition activated and prevents the operator from accidentally leaving fan motors, lights on after turning the tractor off and leaving for the day. A circuit breaker is provided to prevent the cab electrical components from drawing more power than they should be able to from a dead short. This option can come with your cab if selected or field installed at a later date.

John Deere 2032R /2038R ROPS Cab

The John Deere 2032R /2038R ROPS Cab is designed to provide ROPS protection along with reasonable winter weather protection. The cab design for this model features glass windows at all window locations.

If you are going to be running the tractor with the cab on during the summer months, un-hook the gas shocks on each door, and then lift the doors off of the pin hinges.

After your ROPS Cab has been installed:

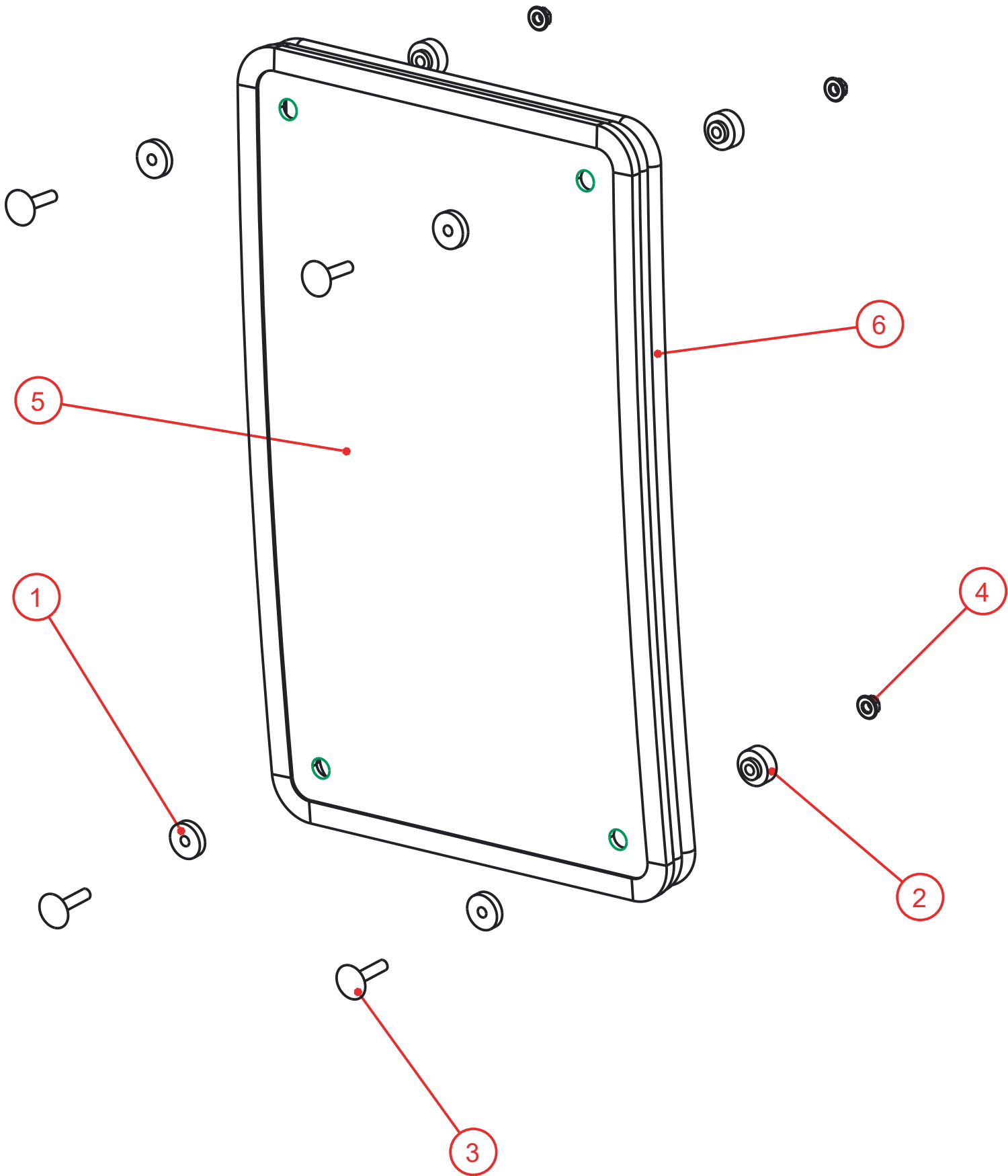
Before starting a tractor equipped with a Tektite ROPS cab:

1. Clear the operator platform of all tools. Tools left in or around the ROPS and tractor can cause operator interference which could lead to bodily injury and/or damage the machine.
2. Inspect the ROPS and tractor to ensure all bolts are tight and re-tighten if required.
3. Ensure that all pedals, levers, and controls have adequate clearance for normal operation.
4. Ensure that all electrical components of both the ROPS and tractor operate normally.
5. Ensure your door latches properly onto the striker pin. Immediately after installation, the ROPS frame may flex slightly from installation, and the door latch will need to be re-aligned for proper operation. Loosen the striker pin, striker mounting plate and door latch as necessary to get a proper alignment of the door striker.

Service Parts Breakdowns:

Following are parts breakdowns for components that may require service parts replacement during the life of the ROPS. If you require replacement parts, please contact the dealer that you purchased the ROPS from and indicate which parts you require.

Index	Service Part #	File Name	Description	Qty
1	A00-0013	TEKT-0009	5MM Bushing	4
2	A00-0014	TEKT-0092	Thick Bushing	4
3	A00-0020	STEP-BOLT1-4X1-1-4	Step Bolt, 1/4" x 1 1/4", MB	4
4	A00-0021	FLANGE-NUT-1-4	Flange Nut, 1/4", YD	4
5	J17-0005	JD2038-048	Lower Front Window	1
6	J17-0012	JD2038-068-	Lower Window Seal	1



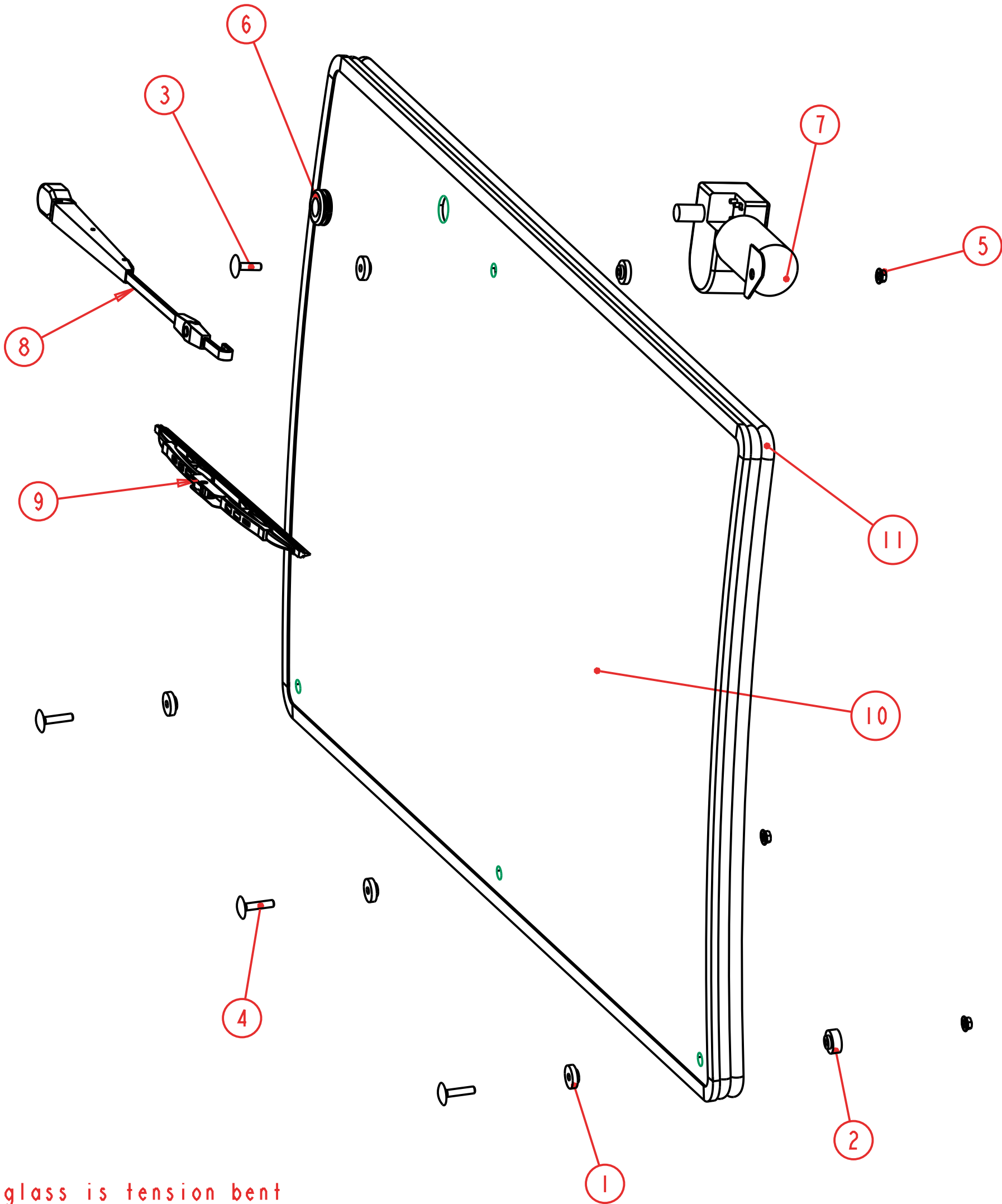
Notice of Confidentiality

This material is property of Tektite Manufacturing Inc and is not to be used by the recipient for any purpose other than the purpose for which it was transmitted. The material remains the property of Tektite and shall be returned upon request. The material may not be reproduced or disclosed to third parties without the written consent of Tektite.

Tolerances:
Unless otherwise specified
X.X = $\pm 1/16"$
Angular = $\pm 1.0^\circ$

Tektite Manufacturing Inc. 24157 Hwy 3, Box 639, Winkler MB, R6W 4A8, Canada					
Req'd: L&R	CNC:	Description: Lower Front Window Assembly			
Drawn By: <i>Daryl Furkalo</i>	Date: 2017-09-12	Units: Imp.	File Name: JD2O38-ASM-15_OP		
Checked By:	Date:	Size: B			

Index	Service Part #	File Name	Description	Qty
1	A00-0013	TEKT-0009	5MM Bushing	5
2	A00-0014	TEKT-0092	Thick Bushing	3
3	A00-0019	STEP-BOLT1-4X1	Step Bolt, 1/4" x 1", MB	1
4	A00-0020	STEP-BOLT1-4X1-1-4	Step Bolt, 1/4" x 1 1/4", MB	3
5	A00-0021	FLANGE-NUT-1-4	Flange Nut, 1/4", YD	4
6	A00-0033	315-080	Rear Wiper Shaft Grommet	1
7	A00-0043	WWF-MOTOR	WWF Wiper Motor, 1" Shaft	1
8	A00-0429	TEKT-0274	Adjustable J-Hook Arm, 16"	1
9	A00-0430	TEKT-ASM-104	16" Wiper Blade J-Hook	1
10	J17-0004	JD2038-047	Front Window Glass	1
11	J17-0011	JD2038-067-	Windshield Seal	1



Flat glass is tension bent
into place to form curve

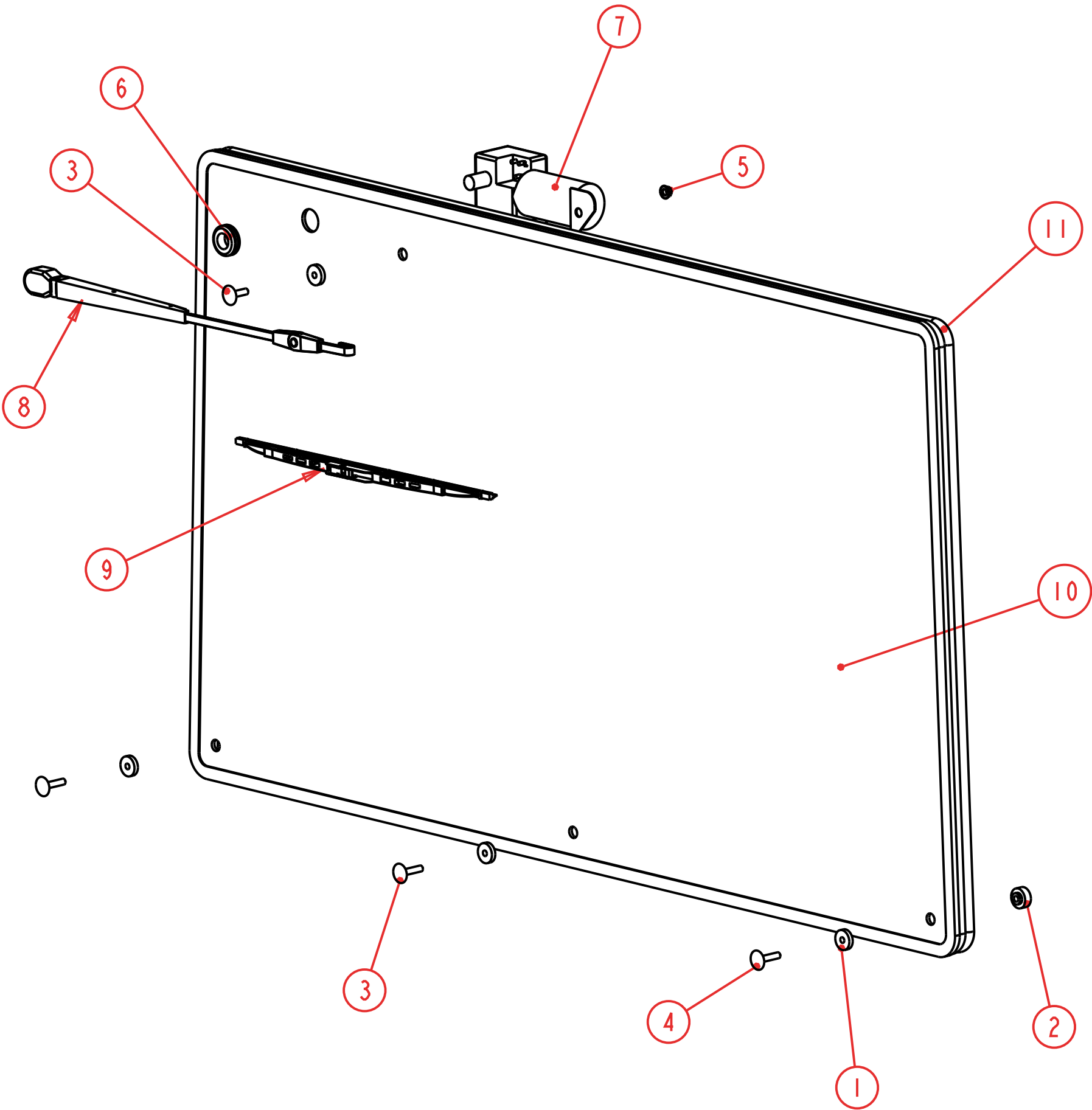
Notice of Confidentiality

This material is property of Tektite Manufacturing Inc and is not to be used by the recipient for any purpose other than the purpose for which it was transmitted. The material remains the property of Tektite and shall be returned upon request. The material may not be reproduced or disclosed to third parties without the written consent of Tektite.

Tolerances:
Unless otherwise specified
X.X = ±1/16"
Angular = ± 1.0°

Tektite Manufacturing Inc. 427 Buffalo Str, Box 639, Winkler MB, R6W 4A8, Canada			
Req'd: 1 req	CNC:	Description: Windshield Assembly	
Drawn By: <i>Daryl Furkalo</i>	Date: 2025-04-22	Units: Imp.	File Name: JD2038-ASM-14_OP
Checked By:	Date:	Size: B	

Index	Service Part #	File Name	Description	Qty
1	A00-0013	TEKT-0009	5MM Bushing	5
2	A00-0014	TEKT-0092	Thick Bushing	3
3	A00-0019	STEP-BOLT1-4X1	Step Bolt, 1/4" x 1", MB	1
4	A00-0020	STEP-BOLT1-4X1-1-4	Step Bolt, 1/4" x 1 1/4", MB	3
5	A00-0021	FLANGE-NUT-1-4	Flange Nut, 1/4", YD	4
6	A00-0033	315-080	Rear Wiper Shaft Grommet	1
7	A00-0043	WWF-MOTOR	WWF Wiper Motor, 1" Shaft	1
8	A00-0429	TEKT-0274	Adjustable J-Hook Arm, 16"	1
9	A00-0430	TEKT-ASM-104	16" Wiper Blade J-Hook	1
10	J17-0003	JD2038-046	Rear Window Glass	1
11	J17-0010	JD2038-066-	Rear Window Seal	1



SCALE 0.200

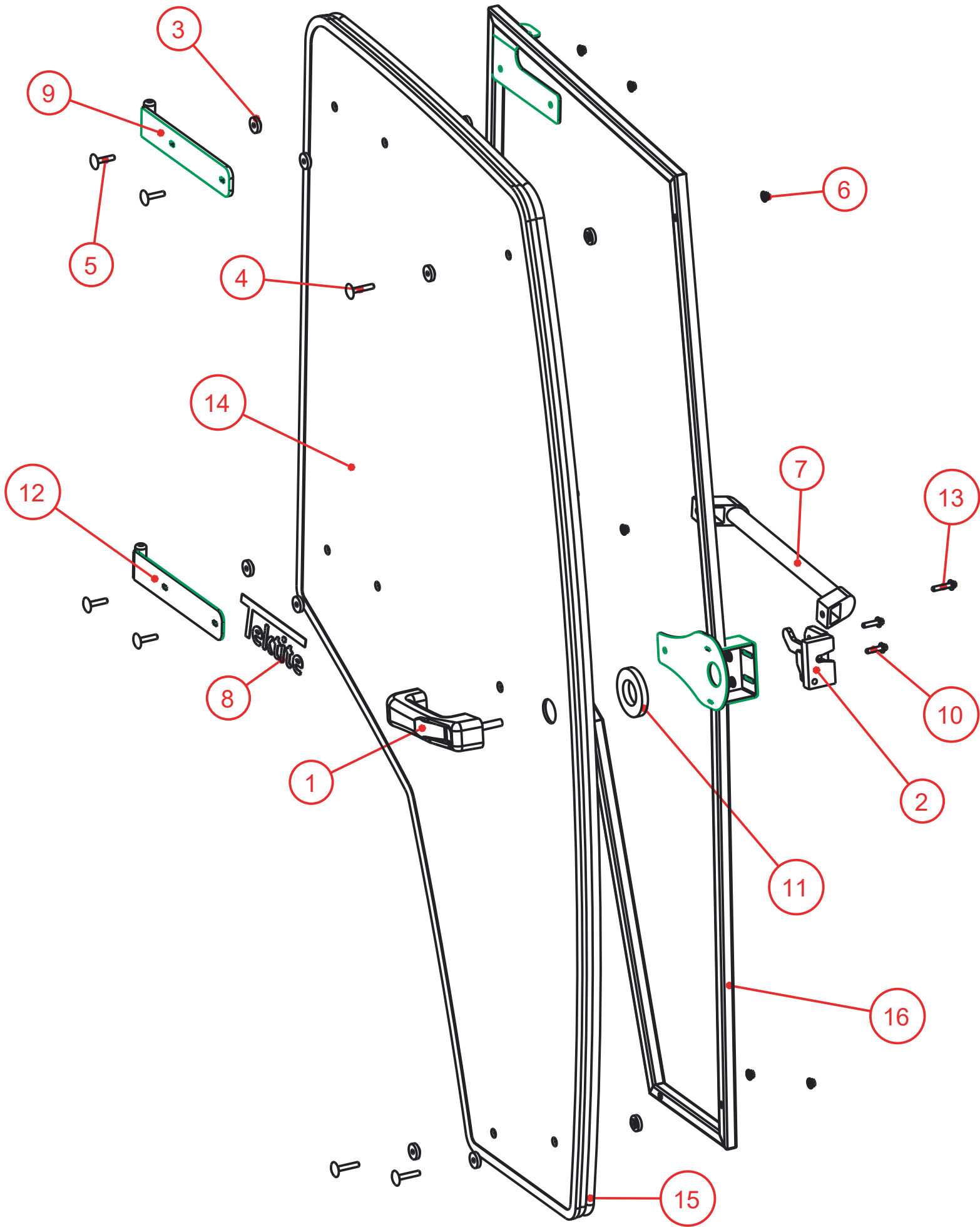
Notice of Confidentiality

This material is property of Tektite Manufacturing Inc and is not to be used by the recipient for any purpose other than the purpose for which it was transmitted. The material remains the property of Tektite and shall be returned upon request. The material may not be reproduced or disclosed to third parties without the written consent of Tektite.

Tolerances:
Unless otherwise specified
X.X = ±1/16"
Angular = ± 1.0°

Tektite Manufacturing Inc. 427 Buffalo Str, Box 639, Winkler MB, R6W 4A8, Canada				
Req'd:	CNC:	Description:		
1 req		Rear Window Assembly		
Drawn By:	Date:	Units:	File Name:	
Daryl Furkalo	2025-04-22	Imp.	JD2038-ASM-13_OP	
Checked By:	Date:	Size:		
		B		

Index	Service Part #	File Name	Description	Qty
1	A00-0001	DLP-HANDLE	Outside Push Button Handle	1
2	A00-0003	RIGHT-LATCH	Suicide Door Right Latch	1
3	A00-0013	TEKT-0009	5MM Bushing	15
4	A00-0018	STEP-BOLT1-4X1-1-2	Step Bolt, 1/4" x 1 1/2", MB	3
5	A00-0020	STEP-BOLT1-4X1-1-4	Step Bolt, 1/4" x 1 1/4", MB	4
6	A00-0021	FLANGE-NUT-1-4	Flange Nut, 1/4", YD	9
7	A00-0040	REID-RST-160-RST-163	Grab Handle	1
8	A00-0041	TEKTITE-DECAL	Tektite Cab Decal - Solid White	1
9	A00-0042	TEKT-ASM-001R	Right Cab Door Hinge Weldment, Upper	1
10	A00-0118	FLANGE_BOLT_1-4X1	Flange Bolt, 1/4" x 1", YD	2
11	A00-0177	TEKT-0068	Handle Washer Spacer	1
12	A00-0229	TEKT-ASM-029R	Right Door Hinge Weldment, Lower	1
13	A00-0295	FLANGE_BOLT_M6X30	Flange Bolt, M6x30, YD	1
14	J17-0002	JD2038-045	Door Glass	1
15	J17-0008	JD2038-065R	Door Weather Seal	1
16	J17-0009	JD2038-ASM-12R	Right Door Frame Weldment	1



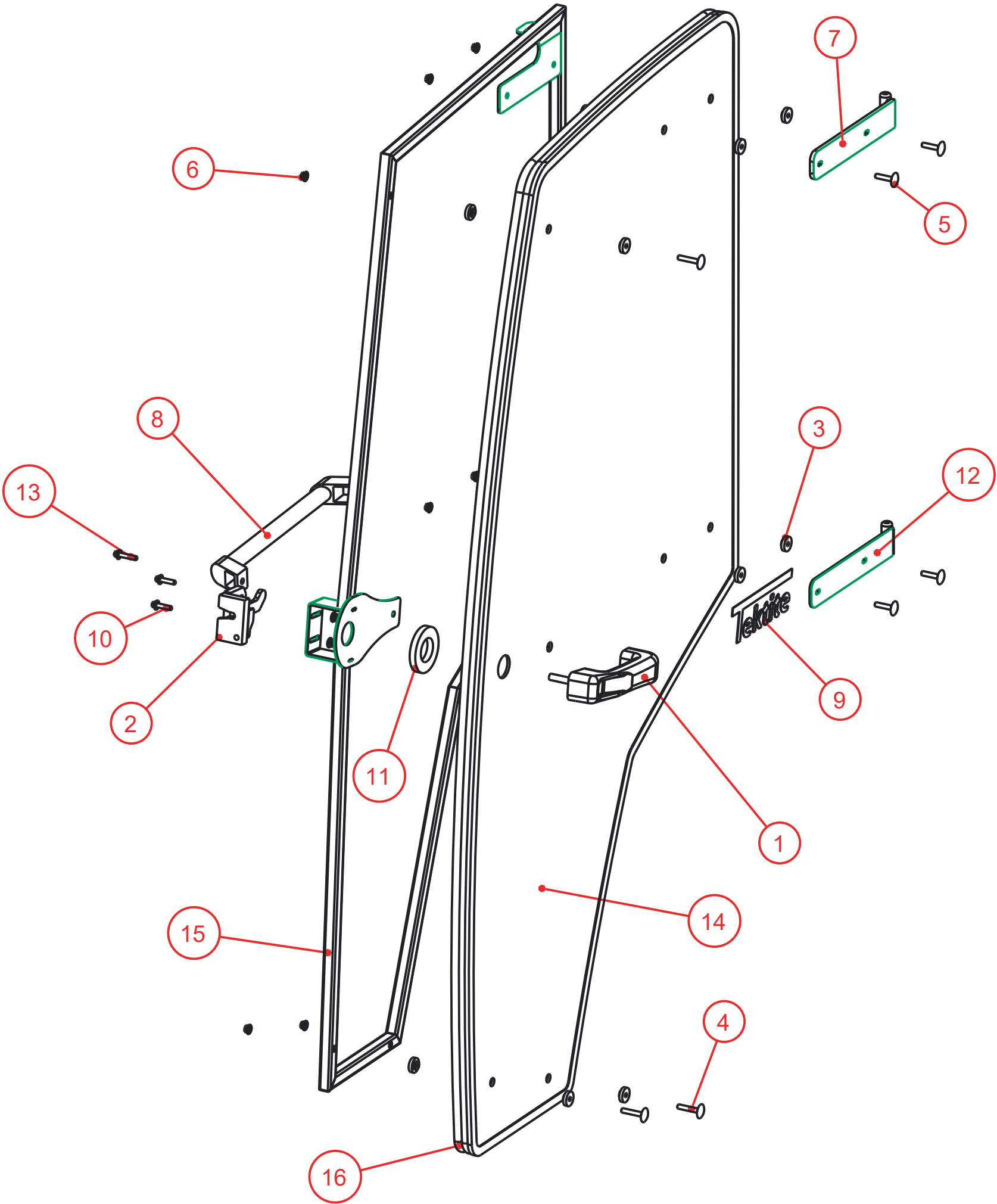
Notice of Confidentiality

This material is property of Tektite Manufacturing Inc and is not to be used by the recipient for any purpose other than the purpose for which it was transmitted. The material remains the property of Tektite and shall be returned upon request. The material may not be reproduced or disclosed to third parties without the written consent of Tektite.

Tolerances:
Unless otherwise specified
X.X = ± 1/16"
Angular = ± 1.0°

Tektite Manufacturing Inc. 24157 Hwy 3, Box 639, Winkler MB, R6W 4A8, Canada					
Req'd:	CNC:	Description:			
1 req		Right Door Assembly			
Drawn By:	Date:	Units:	File Name:		
Daryl Furkalo	2017-09-12	Imp.	JD2038-ASM-O9RT_OP		
Checked By:	Date:	Size:			
		B			

Index	Service Part #	File Name	Description	Qty
1	A00-0001	DLP-HANDLE	Outside Push Button Handle	1
2	A00-0002	LEFT-LATCH	Suicide Door Left Latch	1
3	A00-0013	TEKT-0009	5MM Bushing	15
4	A00-0018	STEP-BOLT1-4X1-1-2	Step Bolt, 1/4" x 1 1/2", MB	3
5	A00-0020	STEP-BOLT1-4X1-1-4	Step Bolt, 1/4" x 1 1/4", MB	4
6	A00-0021	FLANGE-NUT-1-4	Flange Nut, 1/4", YD	9
7	A00-0039	TEKT-ASM-001	Left Door Hinge Weldment, Upper	1
8	A00-0040	REID-RST-160-RST-163	Grab Handle	1
9	A00-0041	TEKTITE-DECAL	Tektite Cab Decal - Solid White	1
10	A00-0118	FLANGE_BOLT_1-4X1	Flange Bolt, 1/4" x 1", YD	2
11	A00-0177	TEKT-0068	Handle Washer Spacer	1
12	A00-0228	TEKT-ASM-029	Left Door Hinge Weldment, Lower	1
13	A00-0295	FLANGE_BOLT_M6X30	Flange Bolt, M6x30, YD	1
14	J17-0002	JD2038-045	Door Glass	1
15	J17-0006	JD2038-ASM-12	Left Door Frame Weldment	1
16	J17-0008	JD2038-065-	Door Weather Seal	1



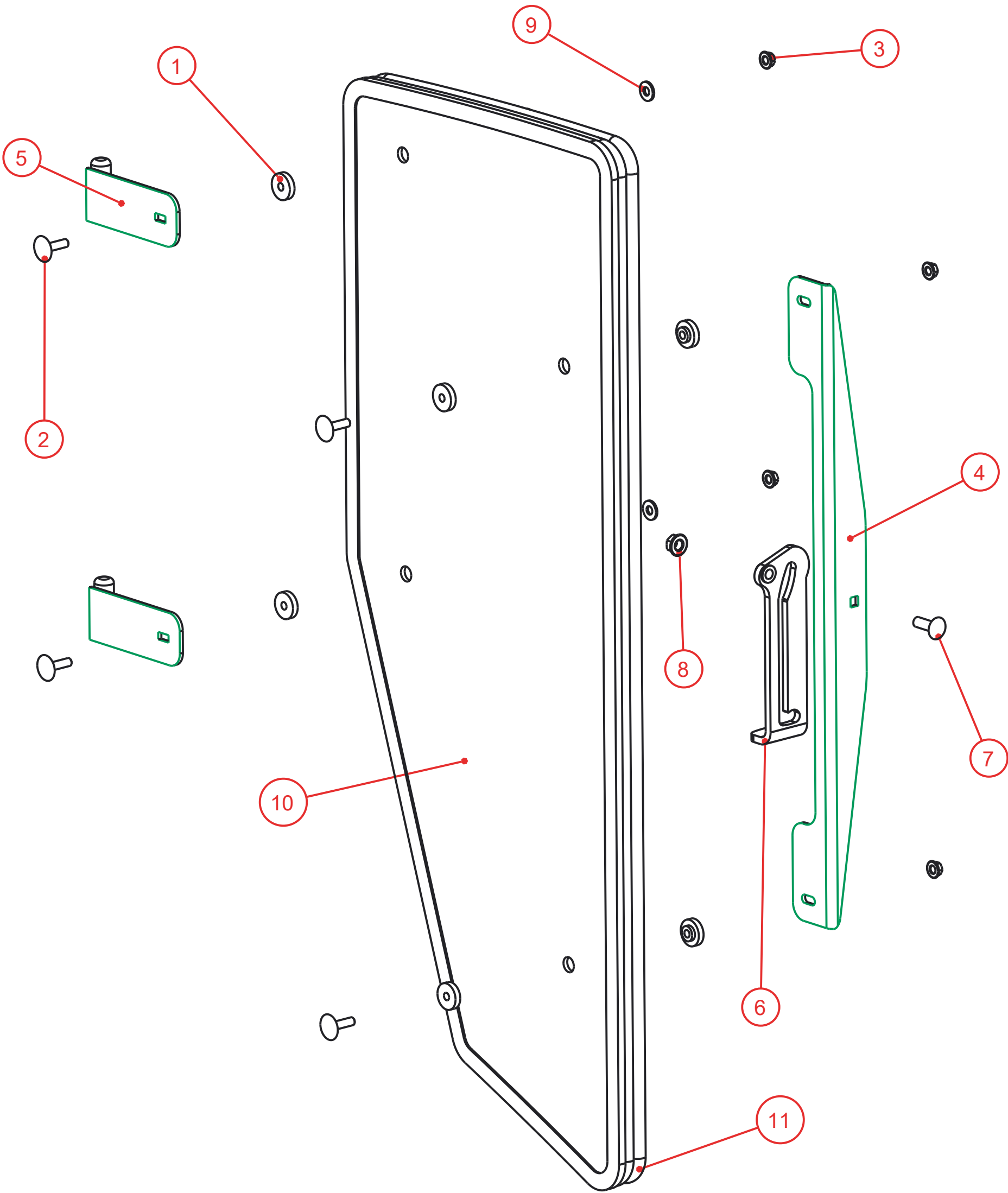
Notice of Confidentiality

This material is property of Tektite Manufacturing Inc and is not to be used by the recipient for any purpose other than the purpose for which it was transmitted. The material remains the property of Tektite and shall be returned upon request. The material may not be reproduced or disclosed to third parties without the written consent of Tektite.

Tolerances:
Unless otherwise specified
X.X = ± 1/16"
Angular = ± 1.0°

Tektite Manufacturing Inc. 24157 Hwy 3, Box 639, Winkler MB, R6W 4A8, Canada				
Req'd: 1 req	CNC:	Description: Left Door Assembly		
Drawn By: Daryl Furkalo	Date: 2017-09-12	Units: Imp.	File Name: JD2038-ASM-09_OP	
Checked By:	Date:	Size: B		

Index	Service Part #	File Name	Description	Qty
1	A00-0013	TEKT-0009	5MM Bushing	8
2	A00-0019	STEP-BOLT1-4X1	Step Bolt, 1/4" x 1", MB	4
3	A00-0021	FLANGE-NUT-1-4	Flange Nut, 1/4", YD	4
4	A00-0045	TEKT-0004	Side Window Slider Bracket, 1" tube	1
5	A00-0046	TEKT-ASM-002R	Side Window Hinge Right	2
6	A00-0056	TEKT-0020	Side Window Latch, L60775	1
7	A00-0058	CARRIAGE_BOLT-5-16X1	Bolt, Carriage, 5/16"x 1", YD	1
8	A00-0059	FLANGE-NUT-5-16	Flange Nut, 5/16", YD	1
9	A00-0119	WASHER_1-4	Washer, Flat, 1/4"	2
10	J17-0001	JD2038-044	Side Window Glass	1
11	J17-0007	JD2038-064R	Side Window Seal	1



Notice of Confidentiality

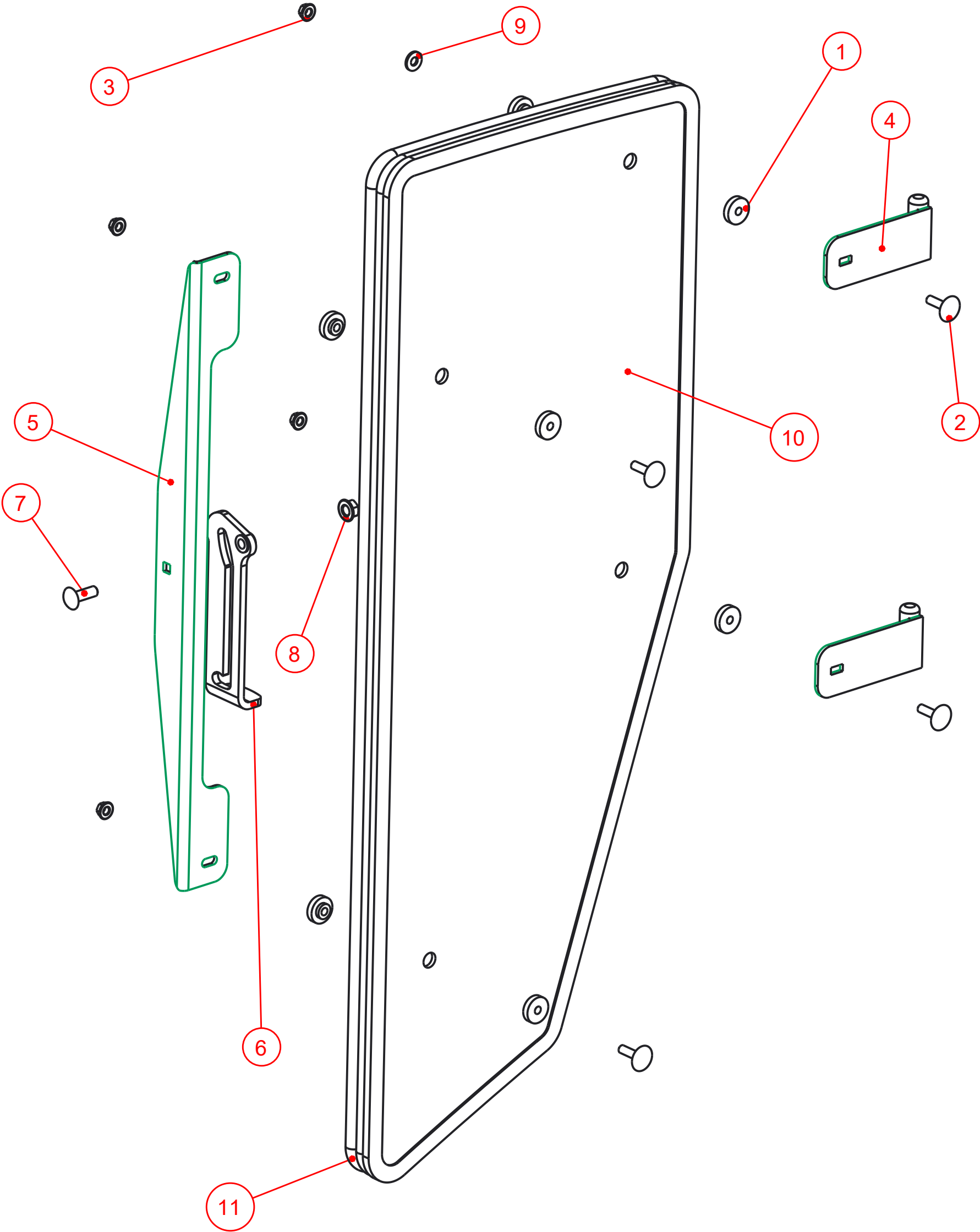
This material is property of Tektite Manufacturing Inc and is not to be used by the recipient for any purpose other than the purpose for which it was transmitted. The material remains the property of Tektite and shall be returned upon request. The material may not be reproduced or disclosed to third parties without the written consent of Tektite.

Tolerances:
Unless otherwise specified

X.X = ± 1/16"
Angular = ± 1.0°

Tektite Manufacturing Inc. 24157 Hwy 3, Box 639, Winkler MB, R6W 4A8, Canada					
Req'd: 1 req	CNC:	Description: Right Side Window Assembly			
Drawn By: Daryl Furkalo	Date: 2017-09-12	Units: Imp.	File Name: JD2038-ASM-O8RT_OP		
Checked By:	Date:	Size: B			

Index	Service Part #	File Name	Description	Qty
1	A00-0013	TEKT-0009	5MM Bushing	8
2	A00-0019	STEP-BOLT1-4X1	Step Bolt, 1/4" x 1", MB	4
3	A00-0021	FLANGE-NUT-1-4	Flange Nut, 1/4", YD	4
4	A00-0044	TEKT-ASM-002	Side Window Hinge Weldment	2
5	A00-0045	TEKT-0004	Side Window Slider Bracket, 1" tube	1
6	A00-0057	TEKT-0020MIR	Side Window Latch, L60776	1
7	A00-0058	CARRIAGE_BOLT-5-16X1	Bolt, Carriage, 5/16"x 1", YD	1
8	A00-0059	FLANGE-NUT-5-16	Flange Nut, 5/16", YD	1
9	A00-0119	WASHER_1-4	Washer, Flat, 1/4"	2
10	J17-0001	JD2038-044	Side Window Glass	1
11	J17-0007	JD2038-064-	Side Window Seal	1



Tektite Manufacturing Inc.
24157 Hwy 3, Box 639, Winkler MB, R6W 4A8, Canada

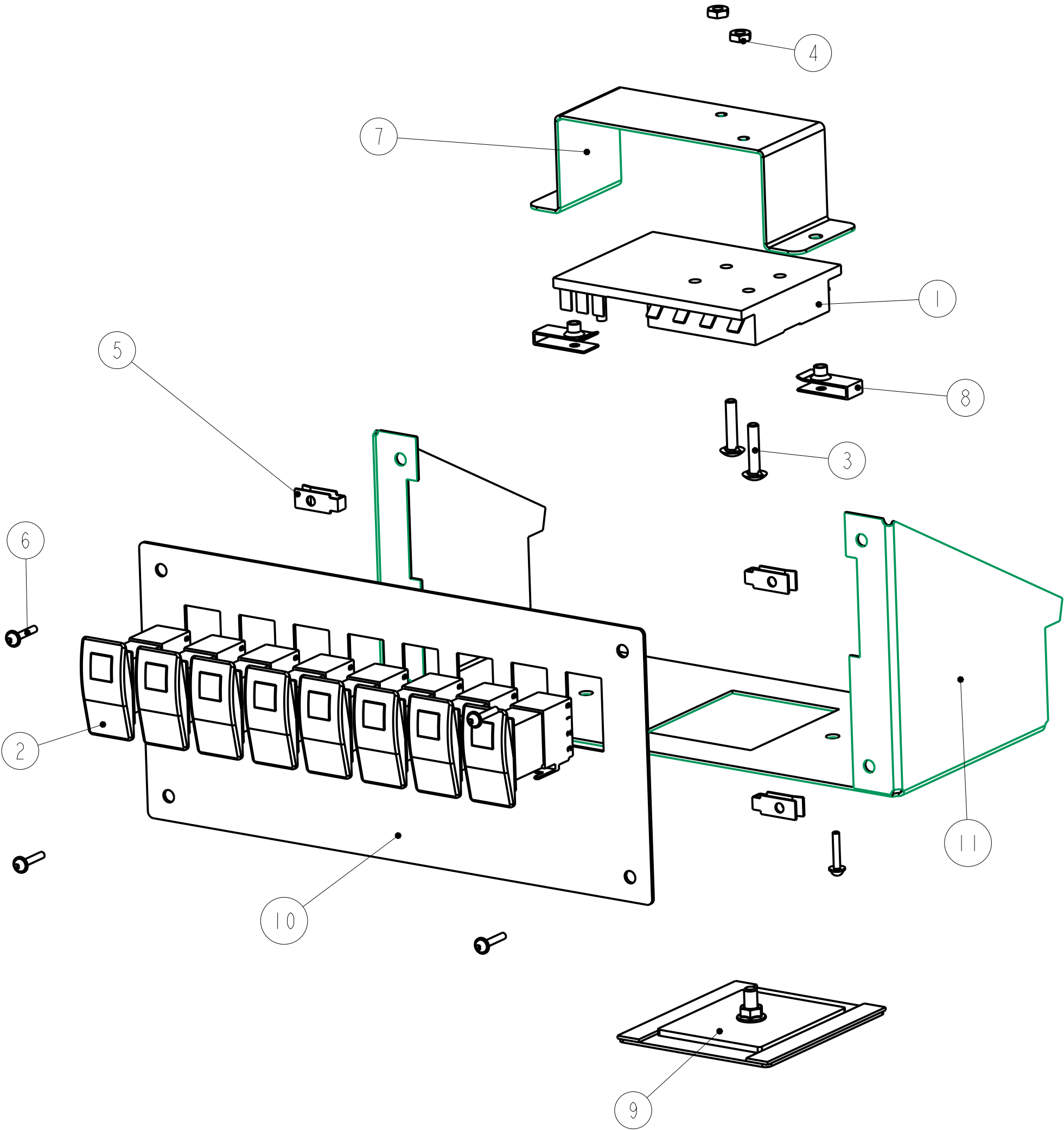
Notice of Confidentiality

This material is property of Tektite Manufacturing Inc and is not to be used by the recipient for any purpose other than the purpose for which it was transmitted. The material remains the property of Tektite and shall be returned upon request. The material may not be reproduced or disclosed to third parties without the written consent of Tektite.

Tolerances:
Unless otherwise specified
X.X = $\pm 1/16"$
Angular = $\pm 1.0^\circ$

Req'd: 1 req					CNC:					Description: Left Side Window Assembly				
Drawn By: <i>Daryl Furkalo</i>					Date: 2017-09-12					Units: Imp.				
Checked By:					Date:					File Name: JD2038-ASM-O8_OP				
										Size: B				

Index	Service Part #	File Name	Description	Qty
1	A00-0024	BUSS-15600-08-11	Power Block/Ground	1
2	A00-0065	TEKT-ASM-005	On-Off Switch w/Lens	8
3	A00-0180	BOLT_10-32X1	Fuse Block Bolts	2
4	A00-0181	HEX-NUT-10-32	Fuse Block Nuts	2
5	A00-0218	TEKT-0218	10-24 Panel Nut	4
6	A00-0354	SCREW-10-24X3-4	Screw, 10-24 x 3/4",MB	6
7	A00-0418	TEKT-0010	Fuse Block Retainer Bracket	1
8	A00-0494	TEKT-0221	10-24 Panel Nut, Thick	2
9	A00-0531	TEKT-ASM-086	2023 Fuse Cover, Magnet Assembly	1
10	A00-0539	TEKT-0248	Switch Plate, V5 ST	1
11	n/a	TEKT-0247	Switchplate Mount V7	1



Tektite Manufacturing Inc.

427 Buffalo Str, Box 639, Winkler MB, R6W 4A8, Canada

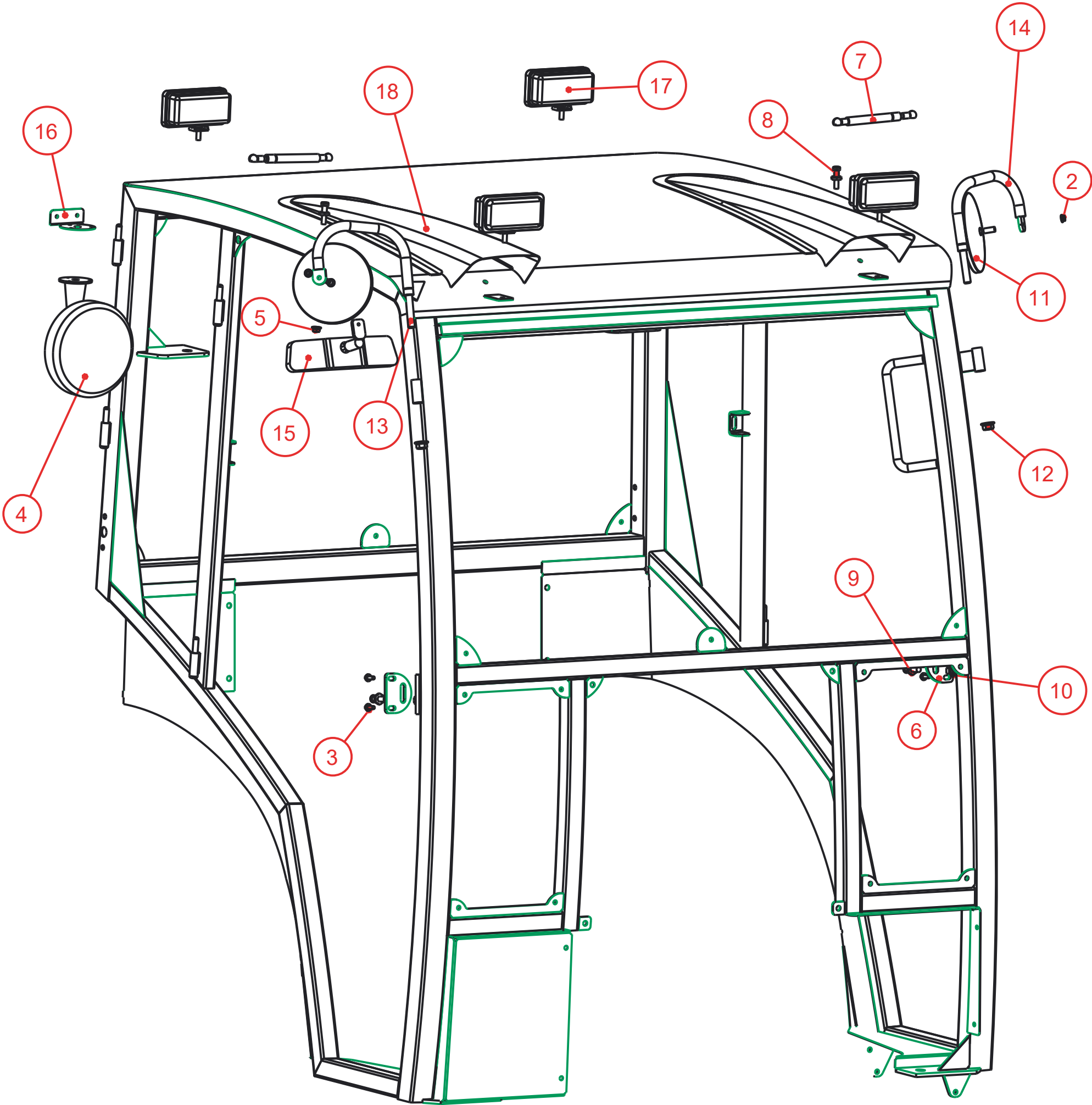
Req'd:	CNC:	Description:
1 req		2023 Steel Top Fuse Block Assembly
Drawn By:	Date:	Units:
<i>Daryl Furkalo</i>	2023-06-02	Imp.
Checked By:	Date:	File Name:
		TEKT-ASM-088_OP
		Size:
		B

Notice of Confidentiality

This material is property of Tektite Manufacturing Inc and is not to be used by the recipient for any purpose other than the purpose for which it was transmitted. The material remains the property of Tektite and shall be returned upon request. The material may not be reproduced or disclosed to third parties without the written consent of Tektite.

Tolerances:
Unless otherwise specified
X.X = $\pm 1/16"$
Angular = $\pm 1.0^\circ$

Index	Service Part #	File Name	Description	Qty
1		JD2038-ASM-10		1
2	A00-0021	FLANGE-NUT-1-4	Flange Nut, 1/4", YD	2
3	A00-0023	FLANGE_BOLT_1-4X3-4	Flange Bolt, 1/4" x 3/4", YD	4
4	A00-0026	OSCILLATING-FAN	Oscillating Fan	1
5	A00-0059	FLANGE-NUT-5-16	Flange Nut, 5/16", YD	2
6	A00-0061	TEKT-0021	Striker Mounting Plate	2
7	A00-0084	TEKT-0070	Gas Shock	2
8	A00-0085	TEKT-0069	Gas Shock Stud	2
9	A00-0101	STRIKER-PIN	Striker Pin	2
10	A00-0103	HEX-NUT-M12X1	Hex Nut, M12 x 1.0, YD	2
11	A00-0141	ROUND_MIRROR_6_INCH	External 6" Mirror	2
12	A00-0179	FLANGE-NUT-1-2	1/2" Nut	2
13	A00-0202	TEKT-ASM-009R	Right Mirror Bracket Weldment	1
14	A00-0203	TEKT-ASM-009	Left Mirror Bracket Weldment	1
15	A00-0215	TEKT-0165	Interior Mirror	1
16	A00-0291	TEKT-0040	Defrost Fan Mount	1
17	A00-0371	TEKT-0175	New LED Work Light (Blazer Intl)	4
18	A00-0389	KUBX2380-NOSTRIL	Plastic Light Nostril	2



Tektite Manufacturing Inc.
24157 Hwy 3, Box 639, Winkler MB, R6W 4A8, Canada

Notice of Confidentiality

This material is property of Tektite Manufacturing Inc and is not to be used by the recipient for any purpose other than the purpose for which it was transmitted. The material remains the property of Tektite and shall be returned upon request. The material may not be reproduced or disclosed to third parties without the written consent of Tektite.

Tolerances:
Unless otherwise specified

X.X = ± 1/16"
Angular = ± 1.0°

Req'd: 1 req				CNC:				Description: Cab w/Optional and Std Parts			
Drawn By: <i>Daryl Furkalo</i>				Date: 2017-09-13				Units: Imp.		File Name: JD2O38-ASM-16	
Checked By:				Date:				Size: B			