



Massey Ferguson 1526 ROPS Cab

* Shown with optional equipment *



Please note: Cab is shown in photo with optional accessories.

Massey Ferguson 1526 ROPS Cab

This ROPS cab is designed and built to fit the Massey Ferguson 1526 tractor.

Designed and Built by:

Tektite Manufacturing Inc:

427 Buffalo Street

P.O. Box 639

Winkler, MB

R6W 4A8

Canada

PH: 204-331-3463

Fax: 204-331-4159

bhunt@tektite.ca

www.tektite.ca

One year standard product warranty provided by Tektite.

Tektite Manufacturing Incorporated thanks you for purchasing a Massey Ferguson 1526 ROPS cab! Tektite has worked very hard to design and build this ROPS product and we hope that it provides you with many years of ROPS protection.

Tektite's ROPS products are designed to provide safe and dependable service during operation when they are properly maintained according to the instructions. Please read this installation manual carefully before installing and using this ROPS product.

The photos/illustrations provided in this manual may not provide all the detail needed, and are for reference only.

All directions provided are from the reference point of the tractor seat facing the steering wheel. All left and right references are from this view point.

For reference, please fill in the information below. This will assist your dealer in providing service for this ROPS. It is advisable that this information be provided to your insurance company as well in the event that the tractor is lost or damaged.

Vehicle Model: _____

ROPS Serial Number: _____

Date of Purchase: _____

Dealer Name: _____

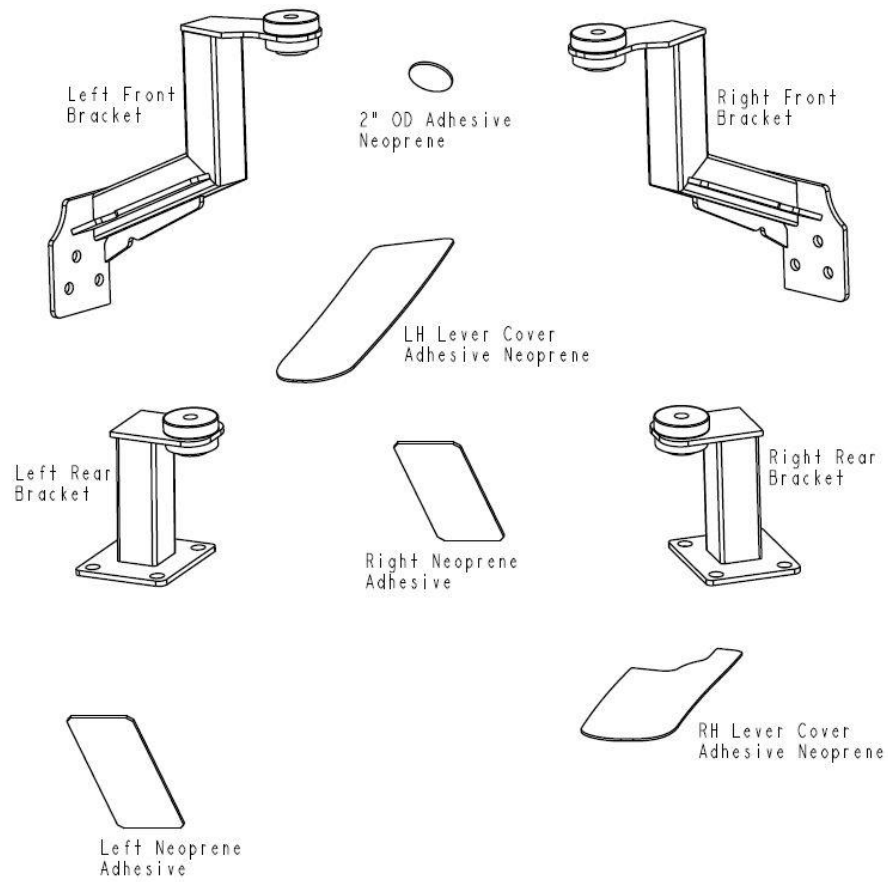
Parts List Standard Cab:

Description	Qty
Nut, Flange, ½", Gr. 8, YD	6
Bolt, Hex, ½" x 2", Gr. 8	6
Front Mounting Brackets	L&R
Rear Mounting Brackets	L&R
Bolt, Hex, 5/8" x 3", Gr. 8, YD	4
Washer, Flat, ¼" thick	4
Nut, Flange, 5/8", Gr. 8, YD	4
Bolt, Hex, ½" x 4 ½"	2
Bolt, Step, ¼" x 1", MB	4
Nut, Flange, ¼", YD	4
Fender Washer, 5/16" x 1 ½"	4
Bushing, Window, Thin	8
Wire Loop, 1/4"	2
Fender Neoprene Panel, LH	1
Fender Neoprene Panel, RH	1
Neoprene Adhesive, LH	1
Neoprene Adhesive, RH	1
Adhesive Neoprene, 2" OD Round	1
Loader Valve Handle M10 x 3/8" x 12" Length	1
LH Pedal Floormat	1
RH Pedal Floormat	1

Parts List Water Heater Kit:

Description	Qty
Hose Clamps, HS-6	2
Reducer Fitting, 3/8" to 5/16"	2
Zip Ties	6

MASSEY Part Numbers 6258253M2 and 6257850M3 are required to finish cab install.

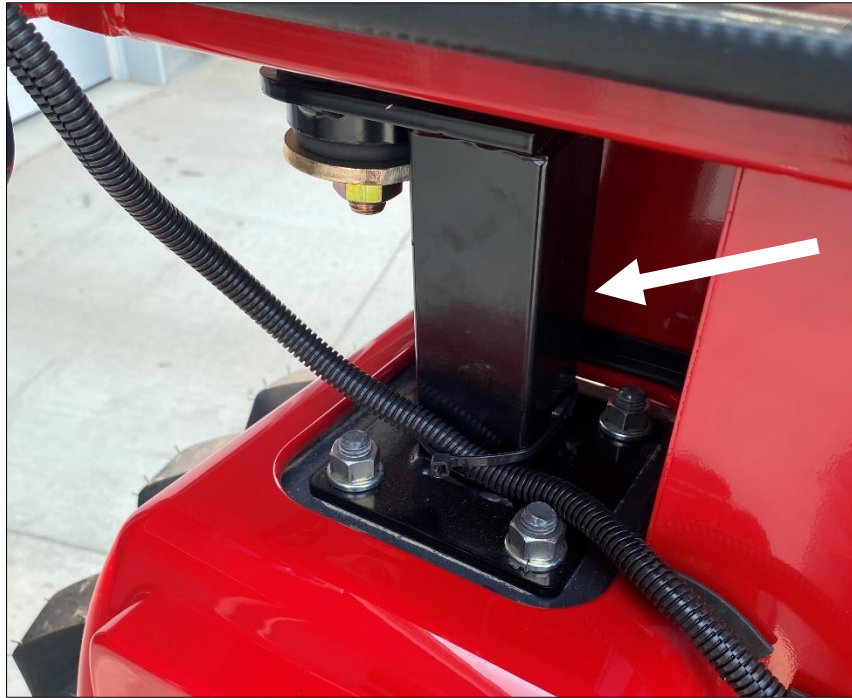


Standard Cab Installation Instructions:

- . Park the tractor in a well-ventilated area, put the loader down along with all tractor attachments.
- . Disconnect tractor battery.
- . Disconnect the tractor flasher lights and remove them from the 2-post ROPS. They will get re-mounted to the tractor cab.
- . Remove both the left and right fender grab handles from the tractor.
- . For the fender grab handle holes, insert step bolt from top with bushings on both sides of the fender, with fender washer under fender and ¼" flange nut at bottom. Use four sets.



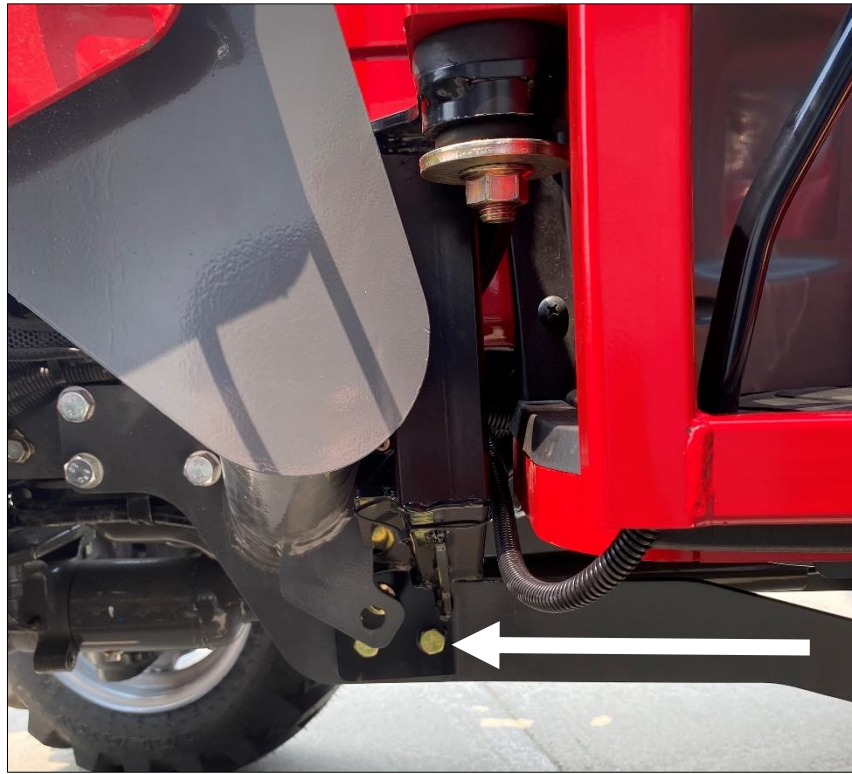
- . Un-bolt the 2-post ROPS and remove, from the fender up.
- . Take the left rear bracket and position where the left side of the 2-post fastened to the chassis. Re-use factory hardware and loosely fasten into place.



. Take the right rear bracket and position where the right side of the 2-post fastened to the chassis. Re-use factory hardware and loosely fasten into place.



- . Move to the front end loader area with the left front bracket. Support the centre section of the sub-frame between the two loader sub-frames.
- . Un-bolt and remove the two lower loader bolts behind and below the round tube crossmember. Carefully slide the front bracket into place. Use two of the provided $\frac{1}{2}$ " x 2" hex bolts and nuts and fasten left front bracket into place.



. Centre punch the third hole location in the front bracket, and then drill a 17/32" hole into loader sub-frame through the hole in the hanger on the bracket. Use provided 1/2" x 2" hex bolt and nut and fasten bracket to sub-frame now. DO NOT tighten bracket yet, only loosely fasten into place.

. Un-bolt and remove the two lower loader bolts behind and below the round tube crossmember. Carefully slide the front bracket into place. Use two of the provided 1/2" x 2" hex bolts and nuts and fasten right front bracket into place.



- . Centre punch the third hole location in the front bracket, and then drill a 17/32" hole into loader sub-frame through the hole in the hanger on the bracket. Use provided 1/2" x 2" hex bolt and nut and fasten bracket to sub-frame now. DO NOT tighten bracket yet, only loosely fasten into place.
- . Un-bolt the loader control valve and let it hang down for now with support underneath until cab is installed.
- . Return to the cab in order to install cab lift bolts.
- . To remove the doors, the gas shock must be released from the pin. Use a flat screwdriver underneath the small clip on the end cap that must be pulled UP in order to pop the shock off of the ball stud. **The shock will release very easily when this is accomplished.** Lift the door assembly straight up and off of the cab and put aside for now. Repeat for the other side.



- . Take the provided cab lift bolts, $\frac{1}{2}$ " x $4 \frac{1}{2}$ " hex bolts, and fasten to the weld nut located at the top rear of the door opening on both sides. Nut is located behind the tab.
- . Use a lift strap or chain and connect the two lift bolts together. Attach to an overhead hoist or forklift and get ready to lift off the shipping pallet.
- . Un-bolt the cab from the shipping pallet at the front and the rear locations. Lift straight up and off the shipping pallet.
- . Raise and position cab so that it is directly over the tractor. Slowly lower cab down onto tractor until the cab mount plates contact the rubber isolators.



- . Use the provided 5/8" x 3" hex bolts, heavy flat washer, and flange nuts to start all four isolator fasteners.
- . Once all four isolator bolts are started, release the overhead hoist completely. The isolator fasteners can receive 205 ft-lbs of torque. The front and rear bracket bolts can receive 97 ft-lbs of torque.
- . Un-bolt lift bolts and remove. Store if planning to remove the cab in the future.
- . Route the main power harness from the lower A-post towards the battery.
- . Connect the heavy red wire to the positive terminal with the provided loop connector. Shorten wire if necessary, and then solder connector.
- . Connect the heavy black wire to the negative terminal with the provided loop connector. Shorten the wire if necessary, and the solder connector.
- . Take the loader control valve and remove handle. Position valve on top of mount plate on the outside of the cab. Use factory bolts and from underneath, install through cab mount plate and the valve body.



- . Unscrew the knob from the end of the lever of the loader control handle. Install knob onto 3/8" threaded side of provided handle (coupler side).
- . Take the provided pre-bent loader handle and screw 10mm side into control valve. Adjust location of handle and use nuts to securely fasten into place.



- . Clean the top of both the left and right control covers to promote proper adhesion.
- . Take the provided LH adhesive neoprene fender panel and position it over the left lever controls on tractor. Carefully pull off adhesive back and stick into place over top of control cover. Use baby powder from underneath the fender in the slit areas to remove stickiness of adhesive to prevent the controls from binding onto adhesive.
- . Take the dealer provided adhesive cover sticker for left side panel. Carefully remove the centre peel off section of the sticker and apply directly over the neoprene just installed. Remove upper and lower sections of adhesive one side at a time and press down firmly to get a tight seal.



- . Take the provided RH adhesive neoprene fender panel and position it over the right lever controls on the tractor. Slowly pull off the adhesive back and stick onto the top of control cover. Use baby powder from underneath of the slit areas to remove the stickiness of the adhesive to prevent controls from binding onto adhesive.
- . Take the dealer provided RH adhesive cover sticker. Remove the centre section of the peel off and apply directly over the neoprene just installed. Remove upper and lower sections of adhesive one side at a time and press down firmly to get a tight seal.

For cabs equipped with heater option, proceed with the following steps:

- . Drain the engine coolant.
- . Locate the upper bypass hose and cut in half.
- . Install provided 3/8" to 5/16" reducer on both bypass hoses with provided hose clamps.
- . Route the heater hoses from the left side of the cab, under the hood panels and into the engine bay.

- . Route towards the open bypass, keeping away from hot components and moving parts. Cut the hose and connect both ends to the engine at the bypass locations with the reducer fittings installed.
- . Re-fill engine antifreeze.
- . Proceed with purging of radiator in well ventilated area. Open heater vents in cab and turn on fan switch.
- . Open radiator cap and start engine. Run engine at high RPM to bring up engine temperature and force thermostat to open and commence flushing air out of cooling system. Keep topping up cooling system as necessary. When heater is blowing HOT air at the vents, you will be done.
- . Take the left rear tractor flasher light along with factory hardware. Route harness through large hole in centre of mount tab on C-post, then fasten the light to mount plate.



- . Take the right rear tractor flasher light along with factory hardware. Route harness through the large hole in the centre of the mount tab on the C-post. Fasten to mount plate.
- . Take the longer adhesive neoprene piece and go to the left of the foot platform. Notch if necessary to allow control to slide through. Clean tractor surface for maximum adhesion, then pull off backing and install neoprene into place.



. Take the shorter adhesive neoprene piece and go to the right of the foot platform. Notch if necessary to allow control to slide through. Clean tractor surface for maximum adhesion, then pull off backing and install neoprene into place.



. Take the provided 2" round adhesive neoprene and install onto horizontal spot on seat platform.



. Take the left platform floormat and position down onto foot platform. Slide around pedal, ensure full range of motion, cut floormat if necessary. Glue down onto foot platform with 3M High Strength 90. (Tektite floormat not shown in photo below)



. Take the right platform floormat and position down onto right foot platform. Slide around pedals, ensure full range of motion, cutting floormat if necessary. Glue down onto foot platform with 3M High Strength 90. (Tektite floormat is not shown installed below)



. To ensure a proper seal, use a black silicone around all the small open cracks between the cab weather stripping and the tractor.



Massey Ferguson 1526 ROPS Cab

* Shown with optional equipment *



Please note: Cab is shown in photo with optional accessories.

Massey Ferguson 1526 ROPS Cab

This ROPS cab is designed and built to fit the Massey Ferguson 1526 tractor.

Designed and Built by:

Tektite Manufacturing Inc:

427 Buffalo Street

P.O. Box 639

Winkler, MB

R6W 4A8

Canada

PH: 204-331-3463

Fax: 204-331-4159

bhunt@tektite.ca

www.tektite.ca

One year standard product warranty provided by Tektite.



DO NOT PROCEED FURTHER UNTIL YOU HAVE READ THE INFORMATION BELOW

- 1) Always wear personal protective equipment**
- 2) A minimum of two people is necessary to safely install the cab**
- 3) This ROPS cab is heavy. A lift assist device such as an overhead hoist or high lift forklift is required.**
- 4) Ensure your work area is well ventilated. The installation requires the starting of the tractor which will produce dangerous carbon monoxide fumes.**
- 5) Read through the entire installation manual first.**
- 6) Follow the installation instructions in order.**
- 7) Reading the operators manual prior to using the ROPS cab.**

Tektite Manufacturing Incorporated thanks you for purchasing a Massey Ferguson 1526 ROPS cab! Tektite has worked very hard to design and build this ROPS product and we hope that it provides you with many years of ROPS protection.

Tektite's ROPS products are designed to provide safe and dependable service during operation when they are properly maintained according to the instructions. Please read this operator manual carefully before using this ROPS product.

The photos/illustrations provided in this manual may not provide all the detail needed and are for reference only.

All directions provided are from the reference point of the tractor seat facing the steering wheel. All left and right references are from this view point.

For reference, please fill in the information below. This will assist your dealer in providing service for this ROPS. It is advisable that this information be provided to your insurance company as well in the event that the tractor is lost or damaged.

Vehicle Model: _____

ROPS Serial Number: _____

Date of Purchase: _____

Dealer Name: _____

Limited Warranty

Tektite Manufacturing Inc. (Tektite) warrants to the original purchaser (the "Claimant"), that Tektite products will be free from defective materials or workmanship, under normal use and service, for a period of (1) full year (or 1500 hours, whichever is less) from the original invoice date. Tektite's liability under this Limited Warranty is limited to the repair or (at the discretion of Tektite) the replacement of those components of its products, which were manufactured by Tektite that are defective in materials or workmanship. Tektite shall have no liability under this Limited Warranty unless Tektite is notified of the defect during the stated Warranty Period.

All returns require a Returned Material Authorization Number (RMA#). Warranty claims must be submitted to Tektite at 1-204-331-3463 prior to written authorization. All warranty work not pre-authorized by Tektite will not be covered by this warranty agreement. Claimant must arrange shipping of the returned and repaired or replaced product or component from Tektite plant in Winkler, Manitoba at the Claimant's own risk and expense. Tektite must receive all returns within (30) days of issuance of a RMA#. Limitations and Exclusions: Tektite has no responsibility to a Claimant under this Limited Warranty or on any other basis for any of the following:

- a) defects caused, in whole or in part, by accident or misuse, negligence or failure to maintain the product or component;
- b) products or components sold to a customer on an "as is" basis;
- c) wiper blades, light bulbs, fuses, clear vinyl or other consumables;
- d) glass where the point of failure has not been preserved intact and delivered to Tektite for analysis of the cause of the failure;
- e) products or components which have been modified after shipping from Tektite to its customer;
- f) transportation charges for returned, repaired or replacement items;
- g) defects that are subject of a Tektite initiated recall where the Claimant fails to comply with the terms of the recall notice that comes to the attention of the Claimant;
- h) components of Tektite products that are manufactured by third parties (Tektite's only obligation in relation to such components shall be to accord to the Claimant the benefit of any transferable warranty accorded to Tektite by third party manufacturer);
- i) defects in workmanship or materials in products or components that are repaired or replaced by Tektite unless Tektite is notified of the new defect within the Warranty Period that applied to the original product or component that has been repaired or replaced;
- j) defects that result, in whole or in part, from inadequate engineering or specifications provided to Tektite by its customer;
- k) any actual or alleged deficiency in technical or engineering services or advice provided by Tektite to its customer whether provided for valuable consideration or otherwise;
- l) consequential damages, or any other damages whether foreseeable or not, resulting from the defect or any delay in remedying the defect; and
- m) any breach or alleged breach of any implied warranty of merchantability or fitness for particular purpose of use;
- n) defects or part failure due to misuse or failure to follow recommended cab installation procedures;
- o) travel expenses, including mileage.

This Limited Warranty expresses the entire obligation of Tektite, its officers, directors, agents and employees, to its customer or any Claimant in respect of any defect in workmanship, or materials of any product or component sold or manufactured by Tektite whether on grounds of breach of contract, negligence or other tortious liability, breach of express or implied warranty or other basis in law of any jurisdiction.

Acceptance by a customer of delivery of products of Tektite constitutes acceptance of this Limited Warranty in lieu of all other warranties express or implied including without limitation all implied warranties of merchantability or fitness for particular purpose or use and constitutes acceptance by customer of the exclusions and limitations of the liability of Tektite set out above. Once received, the cab should have ALL exterior cardboard, Styrofoam wrapping removed for immediate inspection of product to ensure that no damages have occurred during transportation. Outer coverings should stay off the cab and the cab be stored indoors in a controlled environment.

***Labor rate fixed at a maximum of \$75.00 per hour (U.S.) and \$75.00 per hour (CDN) based on Tektite determination of applicable hours. All payments to customer will be in the form of credits applied to their account, no exceptions.**

Safety Precautions

Safety First

Read these instructions carefully. It is essential that you read the instructions and safety regulations before you attempt to assemble or use the features that are on this cab/ROPS.

Danger: Indicates an immediate hazardous situation which, if not avoided, will result in death or serious injury.

Warning: Indicates a potentially hazardous situation which, if not avoided, may result in death or serious injury.

Caution: Indicates a potentially hazardous situation which, if not avoided, may result in minor or moderate injury.

Important: Indicates that cab or property damage may result if instructions are not carefully followed.

NOTE: All products are designed to give safe, dependable service if they are operated and maintained according to instructions. It is the owner's responsibility to be certain anyone operating this product reads this manual, and all other applicable manuals, to become familiar with this cab and all safety precautions. Failure to do so could result in serious personal injury or cab damage. If you have any questions, consult your dealer. Read and understand this manual before operation.

NOTE: A safe operator is the best assurance against accidents. All operators, no matter how experienced they may be, should read this operator manual and all other related manuals before attempting to operate features in this cab/ROPS and operate the base tractor. Please read the following section and pay particular attention to all safety recommendations contained in this manual and those labelled on the cab and on the tractor.

General Safety

1. Never let an unqualified or untrained driver operate the tractor.
2. Keep a fire extinguisher, with ABC rating securely fastened in the ROPS. Maintain it and be familiar with its use.
3. Do not carry passengers.
4. Never operate the tractor in a closed building for a prolonged period. Ensure adequate ventilation is present, as engine exhaust fumes are poisonous and can kill.
5. Always keep sleeves, jackets or other loose clothing relatively tight and belted. Loose clothing may catch on moving parts and result in severe personal injury or death.
6. Provide a first-aid kit, securely attached inside of the ROPS for use in case of accident.
7. Never jump from the tractor. There is a danger of tripping or falling on protruding parts.
8. Use steps and hand holds when mounting and dismounting the tractor, or for servicing components too high to reach from the ground.
9. When seated in the ROPS, fasten seat belt before starting the engine. A proper seat belt must be worn at all times when using a ROPS.
10. Safety devices and shields are intended to protect operators from injury or death. Under no circumstances should they be modified, disabled or removed.

Operating Safety

1. Always operate the tractor controls while sitting in the operator's seat.
2. Lock seat in position and buckle seat belt before operating the tractor.
3. Avoid abrupt sharp turns at high speeds.
4. On sloped terrain, do not make sharp turns as machine stability could be compromised.
5. Operate the tractor smoothly, avoid abrupt starts and stops.
6. Keep all shields in place when operating the tractor.
7. Do not operate the tractor when you are tired, sick, or impaired.
8. Never operate the tractor in confined areas; visibility next to the tractor is reduced. Injury to bystanders or damage to the ROPS or equipment may result.

Safety

Carefully review the procedures given in this manual and the tractor operator's manual with all operators annually. It is important that all operators become familiar with, and follow safety precautions. Operating instructions must be given to everyone using the tractor before operation and at least once yearly thereafter in compliance with OSHA Regulations 1928.57 (United States).

Safe Operation on Rough Terrain

1. Drive the tractor slowly on hillsides and curves to eliminate the danger of tipping. Avoid slopes which are too steep for safe operation. Avoid sharp uphill turns.
2. Always drive slowly enough over rough ground or obstructions. Drive at speeds slow enough to ensure your safety.
3. When driving out of a ditch, gully, or up a steep hillside, engage the clutch slowly. Avoid sharp uphill turns.
4. When descending steep grades, select a sufficiently low gear to maintain control with minimum use of braking.
5. Use caution when driving near the edge of a ditch or gully. It may cave in, causing the tractor to roll over.
6. Be alert when operating near trees, slopes and around obstructions. Tree branches can cause damage to ROPS components.

Maintenance Safety

1. Remove mud, crop residue, chains, and tools from steps and operator's platform. They may interfere with pedal operation or entry/exit from tractor.
2. When servicing components are too high to reach from the ground use steps and handholds. Do not use fenders or shields that are not designed as steps.

Safe Highway Operation

1. Before operating the tractor on, or near, public roadways check with your local authorities for any local regulations that will affect you.
2. Equip towed implements with slow moving vehicle (SMV) signs when traveling on public roads.
3. Install additional lights on implement rear to safeguard against rear end collisions.
4. Use hazard warning flashers as required by law when transporting or driving on public roads. If the tractor had warning flashers removed when mounting the ROPS, they must be replaced prior to operation on public roads.
5. Keep to the right, yielding right-of-way traffic, especially if pulling implements. Pull off the road and stop to allow motorists to pass. Drive on the road shoulder, if permitted by law.
6. Use extreme caution when pulling heavy loads at road speeds. Avoid hard application of the tractor brakes at high speed.
7. Always drive slowly near curbs, approaches or ditches.
8. If equipped, ensure headlights are aligned so they will not blind the operators of oncoming vehicles. If the tractor is not equipped with turn signals and law requires them, install them prior to operating on or near public roads.

9. Use your turn signals, checking for traffic well in advance of turning. If the tractor is not equipped with turn signals and law requires them, install them prior to operating on or near public roads.

Safety Decals

1. Keep decals clean. Remove dirt with a wet clean cloth when necessary.
2. Replace safety decals if destroyed, missing, painted over or unreadable. If any safety decals are covered or obscured when the ROPS is mounted, it is recommended that you purchase replacement decals from the tractor manufacturer. Mount them in a readable location at, or near, their original location before operating the tractor.
3. New ROPS decals and tractor decals are available from your tractor dealer.

ROPS Safety

1. Install the ROPS in accordance with Tektite mounting instructions. Failure to do so may affect the ROPS ability to withstand a roll over.
2. If the ROPS is subjected to alteration, structural damage or involved in an over turn accident, the entire structure must be replaced. Failure to do so may result in injury or death in the event of a roll over.
3. If the tractor is not equipped with seat belts, purchase approved seat belts from the tractor manufacturer or Tektite prior to operating the tractor.
4. Always fasten seat belts prior to operating the tractor.
5. Always operate the tractor from the operator's seat.
6. Remove mud, crop residue, chains and tools from steps and operator's platform. They may interfere with pedal operation or entry/exit from the tractor.
7. Remove all loose chains, tools, and equipment from the operator's platform. Failure to do so may cause injury or death in the event of a roll over.
8. Do not install the ROPS on a tractor model that the ROPS is not designated for (compatible tractor designations are printed on the ROPS serial number plate). The ROPS is designed specifically for individual models to ensure ROPS requirements will be met. Installing the ROPS on a non designated tractor may result in injury or death.

Emergency Exits

The ROPS cab has two doors. Either one can be used during an emergency.

Operating Instructions

Important

The following section locates, identifies, and briefly describes the functions of all cab controls. All operators should familiarize themselves with control location and function prior to operating the tractor. Failure to do so may result in unsafe operation of the tractor and possible injury or death to operators and bystanders.

There is one switch plate located in the cab. The following switches are available and their functionality is described.



Cab Switch Plate

1. Front Wiper Rocker Switch (standard)

Low position: Off

High position: On

Note: indicator light activates when wiper is on.

2. Rear Wiper Rocker Switch (not available on all models)

Low position: Off

High position: On

Note: indicator light activates when wiper is on.

3. Front Work Light Rocker Switch (standard)

Low position: Off

High position: On

Note: indicator light activates when work lights are on.

4. Rear Work Light Rocker Switch (optional)

Low position: Off

High position: On

Note: indicator light activates when work light is on.

5. Beacon Rocker Switch (optional)

Low position: Off

High position: On

Note: indicator light activates when work lights are on.

6. Washer Momentary Switch (Front and Rear optional)

Low position: On

Mid position: Off

High Position: On

7. Water Heater Fan Rocker Switch (optional)

Low position: Off

High position: On

Note: indicator light activates when work lights are on.

Standard and optional features are individually fused, and the fuses can be accessed behind the plug in the middle of the switch-plate.

Cab Circuit Protection

The Tektite ROPS cab is wired to provide maximum protection against individual circuit overload. All optional components are fused internally behind the cab switch plate.

After your ROPS Cab has been installed:

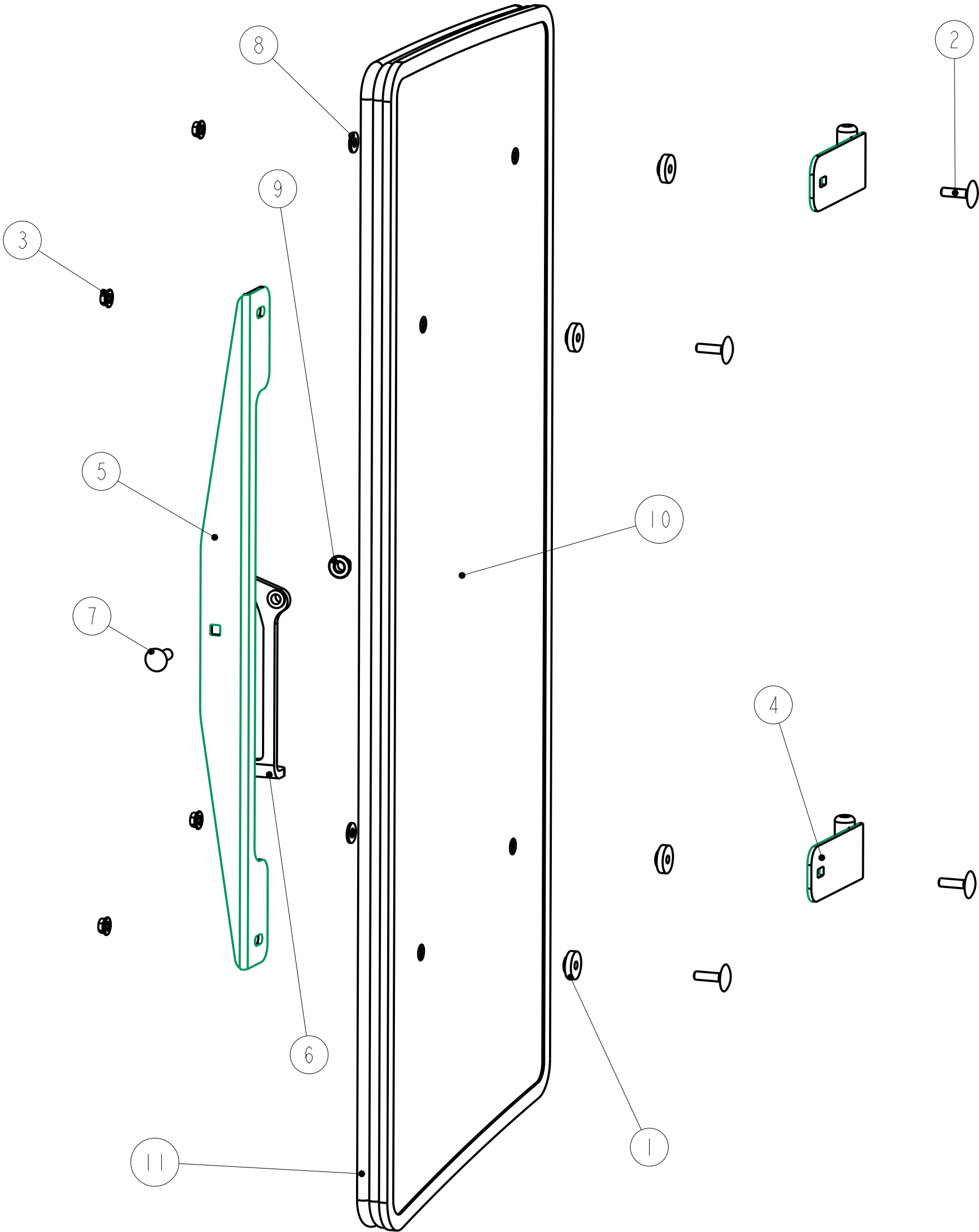
Before starting a tractor equipped with a Tektite ROPS cab:

1. Clear the operator platform of all tools. Tools left in or around the ROPS and tractor can cause operator interference which could lead to bodily injury and/or damage the machine.
2. Inspect the ROPS and tractor to ensure all bolts are tight and re-tighten if required.
3. Ensure that all pedals, levers, and controls have adequate clearance for normal operation.
4. Ensure that all electrical components of both the ROPS and tractor operate normally.
5. Ensure your door latches properly onto the striker pin. Immediately after installation, the ROPS frame may flex slightly from installation, and the door latch will need to be re-aligned for proper operation. Loosen the striker pin, striker mounting plate and door latch as necessary to get a proper alignment of the door striker.

Service Parts Breakdowns:

Following are parts breakdowns for components that may require service parts replacement during the life of the ROPS. If you require replacement parts, please contact the dealer that you purchased the ROPS from and indicate which parts you require.

Index	Service Part #	File Name	Description	Qty
1	A00-0013	TEKT-0009	5MM Bushing	8
2	A00-0019	STEP-BOLT1-4X1	Step Bolt, 1/4" x 1", MB	4
3	A00-0021	FLANGE-NUT-1-4	Flange Nut, 1/4", YD	4
4	A00-0044	TEKT-ASM-002	Side Window Hinge Weldment	2
5	A00-0045	TEKT-0004	Side Window Slider Bracket, 1" tube	1
6	A00-0057	TEKT-0020MIR	Side Window Latch, L60776	1
7	A00-0058	CARRIAGE_BOLT-5-16X1	Bolt, Carriage, 5/16"x 1", YD	1
8	A00-0119	WASHER_1-4	Washer, Flat, 1/4" x 5/8"OD	2
9	A00-0413	FLANGE-NUT-5-16	Flange Nut, 5/16", YD	1
10	M08-0004	MF1526-034	Side Window Glass	1
11	M08-0009	MF1526_061	Side Window Seal	1



Tektite Manufacturing Inc.

427 Buffalo Str, Box 639, Winkler MB, R6W 4A8, Canada

Notice of Confidentiality
This material is property of Tektite Manufacturing Inc and is not to be used by the recipient for any purpose other than the purpose for which it was transmitted. The material remains the property of Tektite and shall be returned upon request. The material may not be reproduced or disclosed to third parties without the written consent of Tektite.

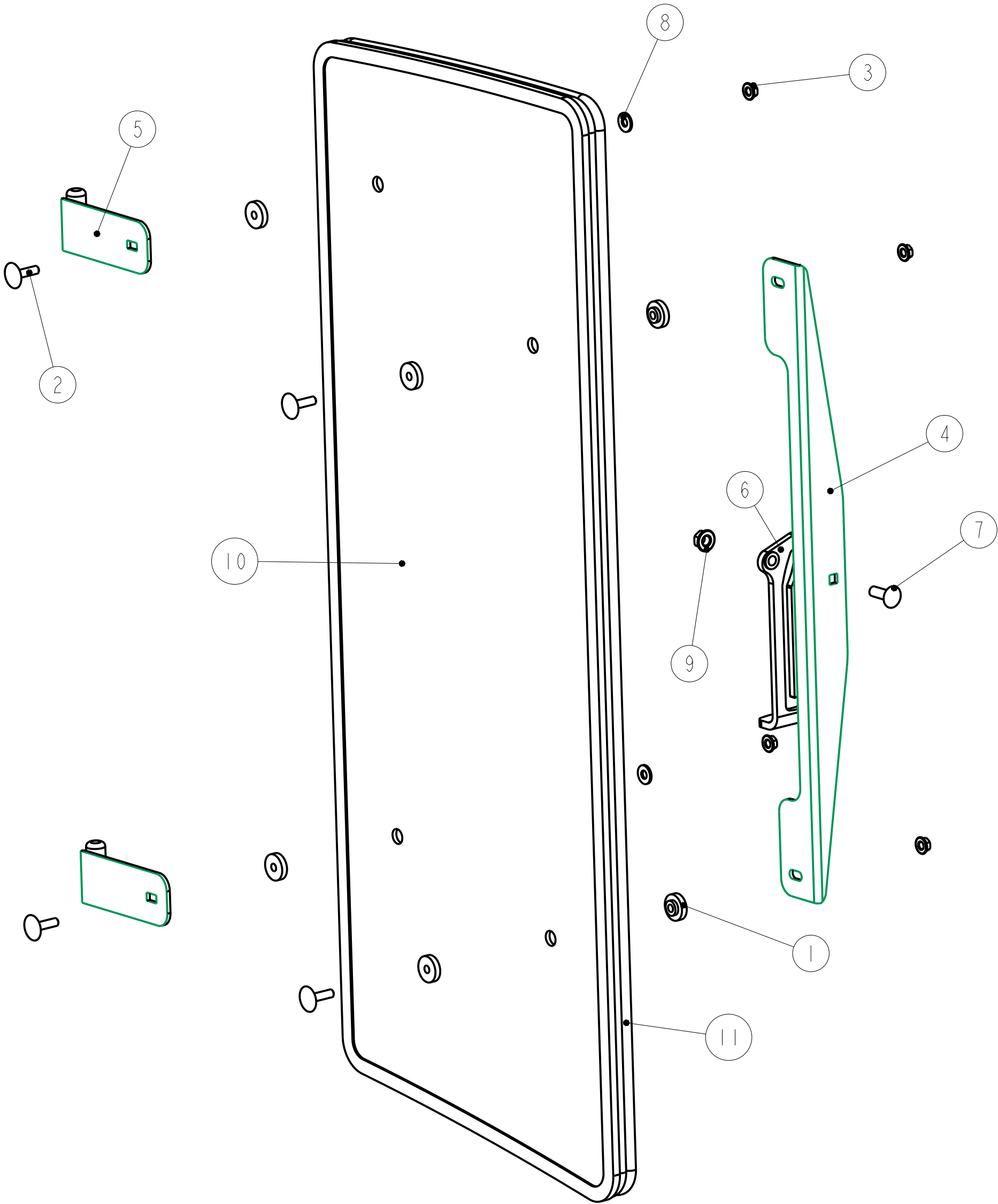
Tolerances:
Unless otherwise specified
X.X = $\pm 1/16"$
Angular = $\pm 1.0^\circ$

Tektite Manufacturing Inc.

427 Buffalo Str, Box 639, Winkler MB, R6W 4A8, Canada

Req'd:	CNC:	Description:		
1 req		LH Side Window Assembly		
Drawn By:	Date:	Units:	File Name:	
Daryl Furkalo	2023-06-14	Imp.	MF1526-ASM-007_OP	
Checked By:	Date:	Size:		
		B		M08-0014

Index	Service Part #	File Name	Description	Qty
1	A00-0013	TEKT-0009	5MM Bushing	8
2	A00-0019	STEP-BOLT1-4X1	Step Bolt, 1/4" x 1", MB	4
3	A00-0021	FLANGE-NUT-1-4	Flange Nut, 1/4", YD	4
4	A00-0045	TEKT-0004	Side Window Slider Bracket, 1" tube	1
5	A00-0046	TEKT-ASM-002R	Side Window Hinge Right	2
6	A00-0056	TEKT-0020	Side Window Latch, L60775	1
7	A00-0058	CARRIAGE_BOLT-5-16X1	Bolt, Carriage, 5/16"x 1", YD	1
8	A00-0119	WASHER_1-4	Washer, Flat, 1/4" x 5/8"OD	2
9	A00-0413	FLANGE-NUT-5-16	Flange Nut, 5/16", YD	1
10	M08-0004	MF1526-034	Side Window Glass	1
11	M08-0009	MF1526-061R	Side Window Seal	1



Tektite Manufacturing Inc.

427 Buffalo Str, Box 639, Winkler MB, R6W 4A8, Canada

Notice of Confidentiality

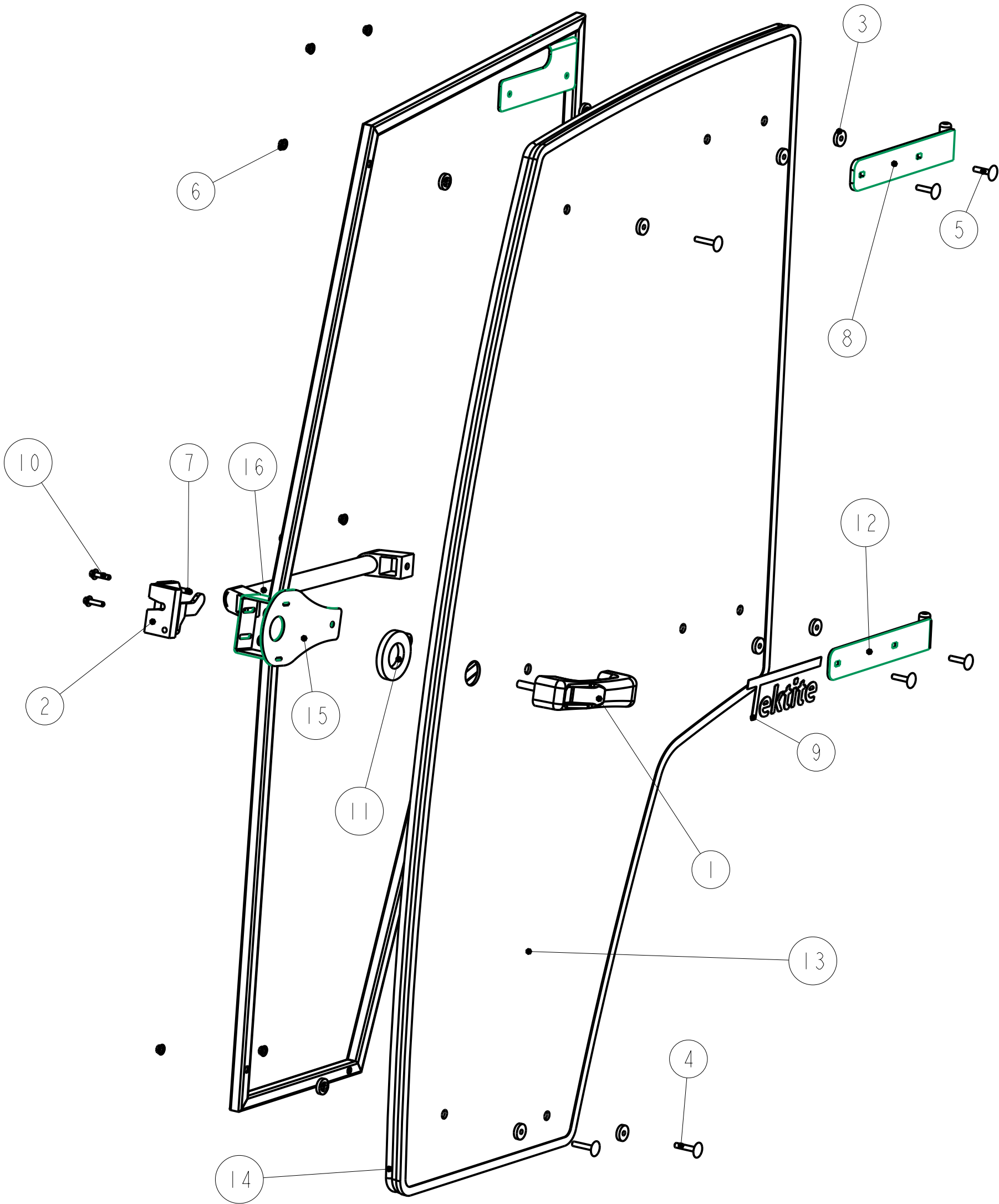
This material is property of Tektite Manufacturing Inc and is not to be used by the recipient for any purpose other than the purpose for which it was transmitted. The material remains the property of Tektite and shall be returned upon request. The material may not be reproduced or disclosed to third parties without the written consent of Tektite.

Tolerances:
Unless otherwise specified

X.X = ±1/16"
Angular = ± 1.0°

Req'd: 1 req				CNC:				Description: Right Side Window Assembly			
Drawn By: <i>Daryl Furkalo</i>				Date: 2023-06-14				Units: Imp.		File Name: MF1526-ASM-007R_OP	
Checked By:				Date:				Size: B		<i>M08-0015</i>	

Index	Service Part #	File Name	Description	Qty
1	A00-0001	DLP-HANDLE	Outside Push Button Handle	1
2	A00-0002	LEFT-LATCH	Suicide Door Left Latch	1
3	A00-0013	TEKT-0009	5MM Bushing	15
4	A00-0018	STEP-BOLT1-4X1-1-2	Step Bolt, 1/4" x 1 1/2", MB	3
5	A00-0020	STEP-BOLT1-4X1-1-4	Step Bolt, 1/4" x 1 1/4", MB	4
6	A00-0021	FLANGE-NUT-1-4	Flange Nut, 1/4", YD	9
7	A00-0022	FLANGE_BOLT_M6X25	Flange Bolt, M6x25, YD	1
8	A00-0039	TEKT-ASM-001	Left Door Hinge Weldment, Upper	1
9	A00-0041	TEKTITE-DECAL	Tektite Cab Decal - Solid White	1
10	A00-0118	FLANGE_BOLT_1-4X1	Flange Bolt, 1/4" x 1", YD	2
11	A00-0177	TEKT-0068	Handle Washer Spacer	1
12	A00-0228	TEKT-ASM-029	Left Door Hinge Weldment, Lower	1
13	M08-0003	MF1526-035	Door Glass	1
14	M08-0008	MF1526_063	Door Seal	1
15	M08-0010	MF1526-ASM-011	Left Door Frame Weldment	1
16	M08-0020	MF1526-062	Door Handle, MF 1526	1



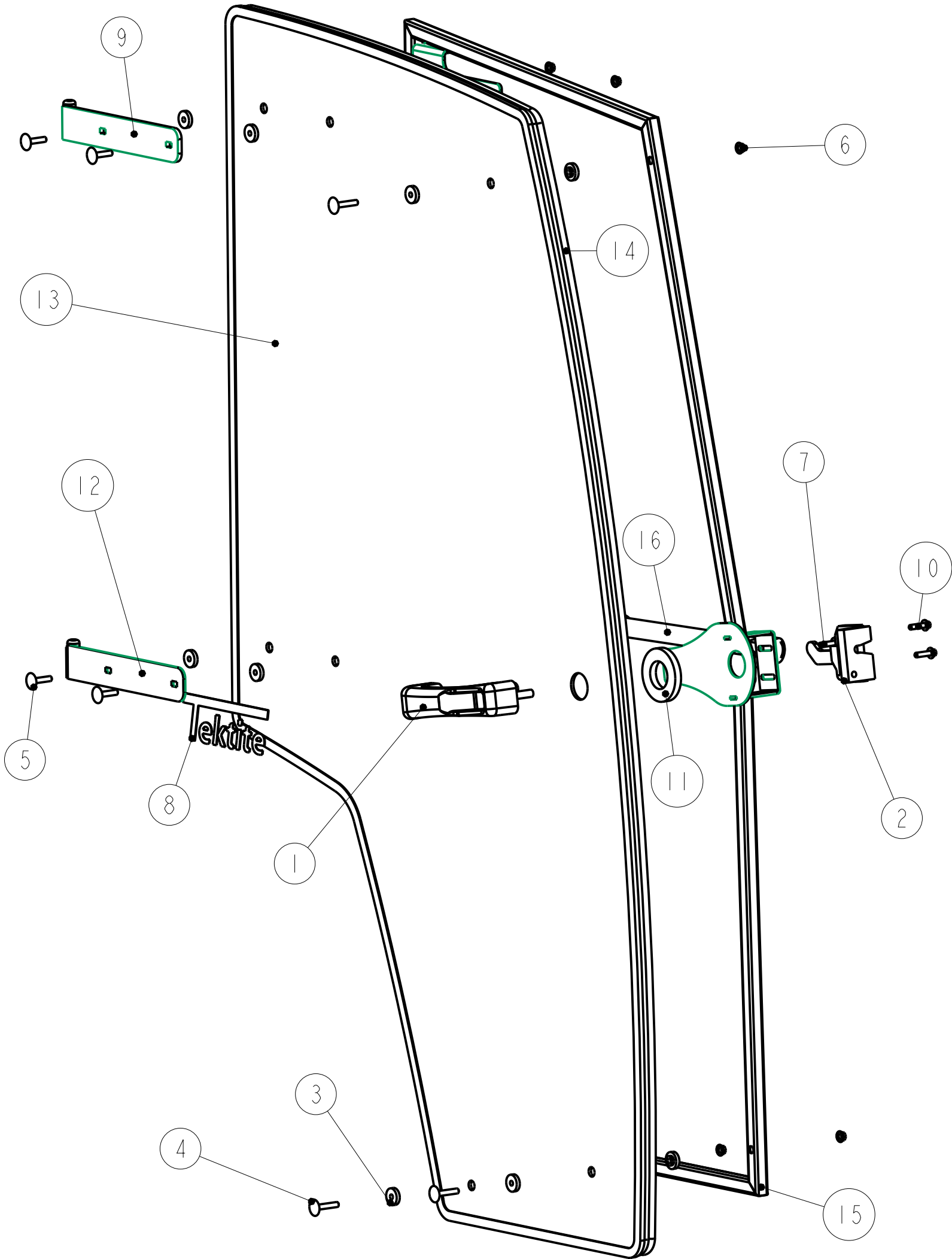
Notice of Confidentiality

This material is property of Tektite Manufacturing Inc and is not to be used by the recipient for any purpose other than the purpose for which it was transmitted. The material remains the property of Tektite and shall be returned upon request. The material may not be reproduced or disclosed to third parties without the written consent of Tektite.

Tolerances:
Unless otherwise specified
X.X = ±1/16"
Angular = ± 1.0°

Tektite Manufacturing Inc. 427 Buffalo Str, Box 639, Winkler MB, R6W 4A8, Canada			
Req'd: 1 req	CNC:	Description: Left Door Assembly	
Drawn By: <i>Daryl Furkalo</i>	Date: 2023-06-14	Units: Imp.	File Name: MF1526-ASM-008_OP
Checked By:	Date:	Size: B	<i>M08-0012</i>

Index	Service Part #	File Name	Description	Qty
1	A00-0001	DLP-HANDLE	Outside Push Button Handle	1
2	A00-0003	RIGHT-LATCH	Suicide Door Right Latch	1
3	A00-0013	TEKT-0009	5MM Bushing	15
4	A00-0018	STEP-BOLT1-4X1-1-2	Step Bolt, 1/4" x 1 1/2", MB	3
5	A00-0020	STEP-BOLT1-4X1-1-4	Step Bolt, 1/4" x 1 1/4", MB	4
6	A00-0021	FLANGE-NUT-1-4	Flange Nut, 1/4", YD	9
7	A00-0022	FLANGE_BOLT_M6X25	Flange Bolt, M6x25, YD	1
8	A00-0041	TEKTITE-DECAL	Tektite Cab Decal - Solid White	1
9	A00-0042	TEKT-ASM-001R	Right Cab Door Hinge Weldment, Upper	1
10	A00-0118	FLANGE_BOLT_1-4X1	Flange Bolt, 1/4" x 1", YD	2
11	A00-0177	TEKT-0068	Handle Washer Spacer	1
12	A00-0229	TEKT-ASM-029R	Right Door Hinge Weldment, Lower	1
13	M08-0003	MF1526-035	Door Glass	1
14	M08-0008	MF1526-063R	Door Seal	1
15	M08-0011	MF1526-ASM-011R	Right Door Frame Weldment	1
16	M08-0020	MF1526-062	Door Handle, MF 1526	1



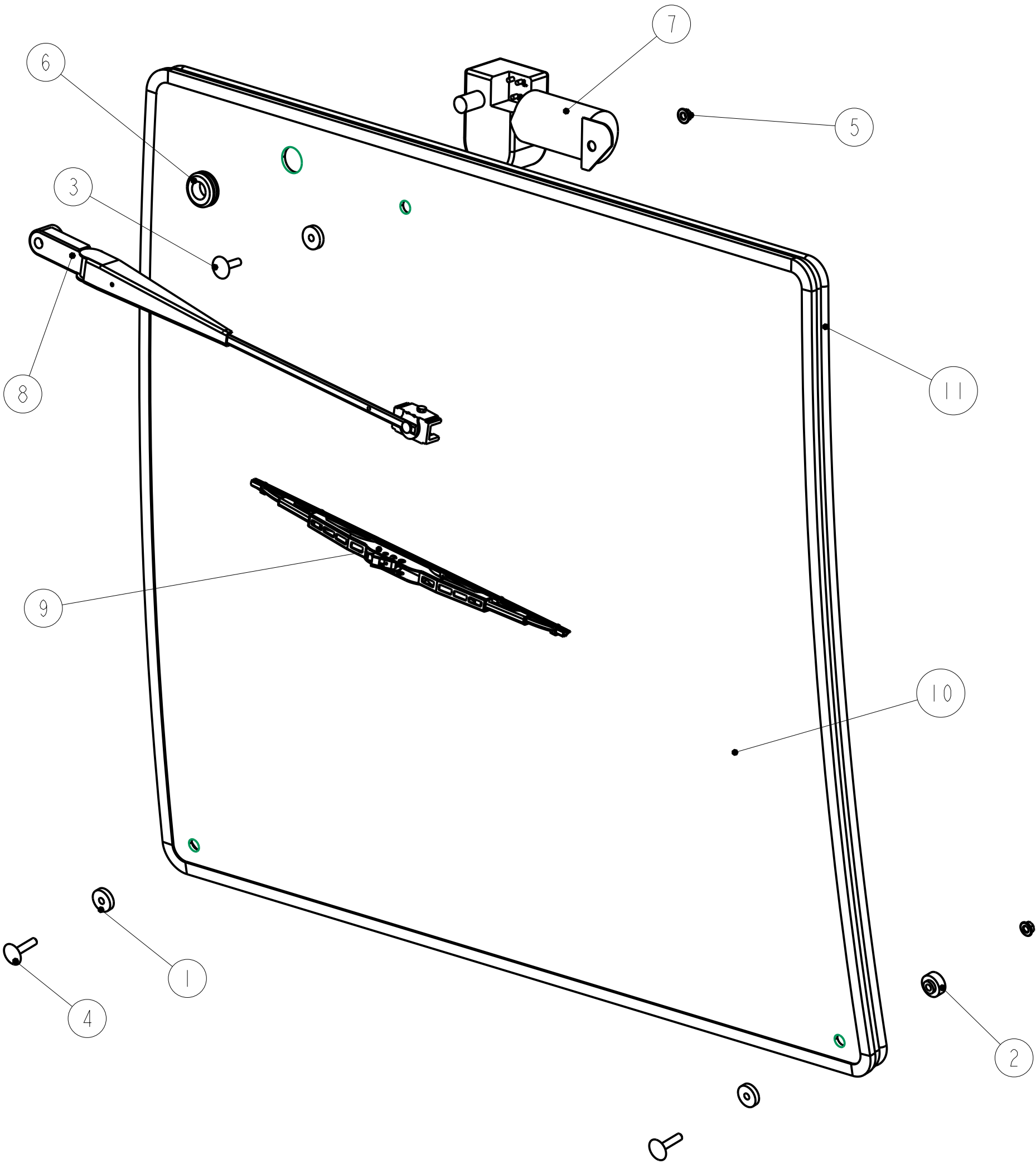
Notice of Confidentiality

This material is property of Tektite Manufacturing Inc and is not to be used by the recipient for any purpose other than the purpose for which it was transmitted. The material remains the property of Tektite and shall be returned upon request. The material may not be reproduced or disclosed to third parties without the written consent of Tektite.

Tolerances:
Unless otherwise specified
X.X = ±1/16"
Angular = ± 1.0°

Tektite Manufacturing Inc. 427 Buffalo Str, Box 639, Winkler MB, R6W 4A8, Canada			
Req'd:	CNC:	Description:	
1 req		Right Door Assembly	
Drawn By:	Date:	Units:	File Name:
Daryl Furkalo	2023-06-14	Imp.	MF1526-ASM-008R_OP
Checked By:	Date:	Size:	
		B	M08-0013

Index	Service Part #	File Name	Description	Qty
1	A00-0013	TEKT-0009	5MM Bushing	4
2	A00-0014	TEKT-0092	Thick Bushing	2
3	A00-0019	STEP-BOLT1-4X1	Step Bolt, 1/4" x 1", MB	1
4	A00-0020	STEP-BOLT1-4X1-1-4	Step Bolt, 1/4" x 1 1/4", MB	2
5	A00-0021	FLANGE-NUT-1-4	Flange Nut, 1/4", YD	3
6	A00-0033	315-080	Rear Wiper Shaft Grommet	1
7	A00-0043	WWF-MOTOR	WWF Wiper Motor, 1" Shaft	1
8	A00-0429	TEKT-ASM-074	WWF, Adjustable Radial Arm, J-Hook, Long	1
9	A00-0430	TEKT-ASM-073	Wiper Blade, 16", J-Hook	1
10	M08-0001	MF1526-033	Front UpperWindow Glass	1
11	M08-0006	MF1526_064	Windshield Seal	1



Tektite Manufacturing Inc.

427 Buffalo Str, Box 639, Winkler MB, R6W 4A8, Canada

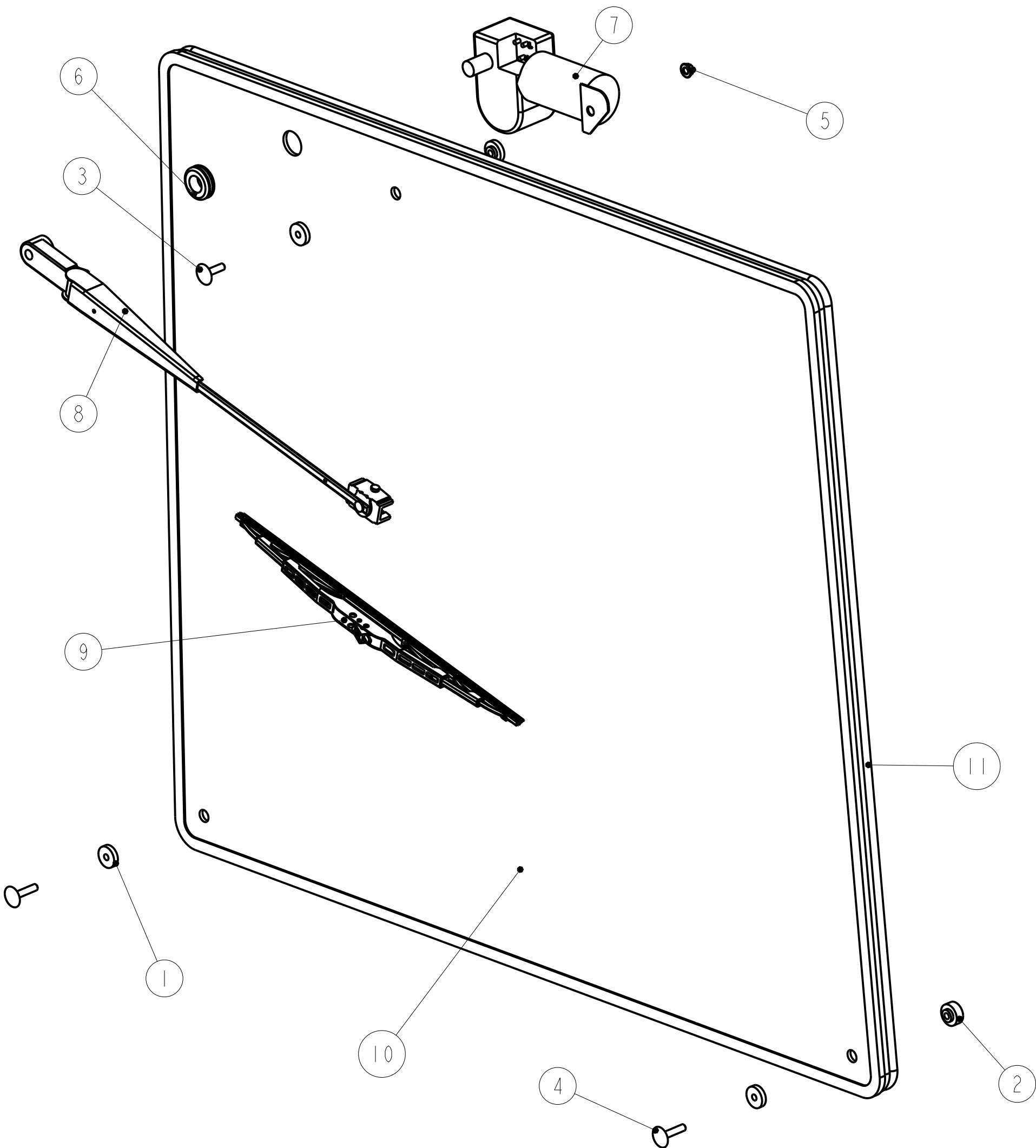
Req'd:	CNC:	Description:		
1 req		Windshield Assembly Breakdown		
Drawn By:	Date:	Units:	File Name:	
Daryl Furkalo	2023-06-14	Imp.	MF1526-ASM-016_OP	
Checked By:	Date:	Size:		M08-0017
		B		

Notice of Confidentiality

This material is property of Tektite Manufacturing Inc and is not to be used by the recipient for any purpose other than the purpose for which it was transmitted. The material remains the property of Tektite and shall be returned upon request. The material may not be reproduced or disclosed to third parties without the written consent of Tektite.

Tolerances:
Unless otherwise specified
X.X = ±1/16"
Angular = ± 1.0°

Index	Service Part #	File Name	Description	Qty
1	A00-0013	TEKT-0009	5MM Bushing	4
2	A00-0014	TEKT-0092	Thick Bushing	2
3	A00-0019	STEP-BOLT1-4X1	Step Bolt, 1/4" x 1", MB	1
4	A00-0020	STEP-BOLT1-4X1-1-4	Step Bolt, 1/4" x 1 1/4", MB	2
5	A00-0021	FLANGE-NUT-1-4	Flange Nut, 1/4", YD	3
6	A00-0033	315-080	Rear Wiper Shaft Grommet	1
7	A00-0043	WWF-MOTOR	WWF Wiper Motor, 1" Shaft	1
8	A00-0429	TEKT-ASM-074	WWF, Adjustable Radial Arm, J-Hook, Long	1
9	A00-0430	TEKT-ASM-073	Wiper Blade, 16", J-Hook	1
10	M08-0002	MF1526-032	Rear Window Glass	1
11	M08-0007	MF1526_065	Rear Window Seal	1



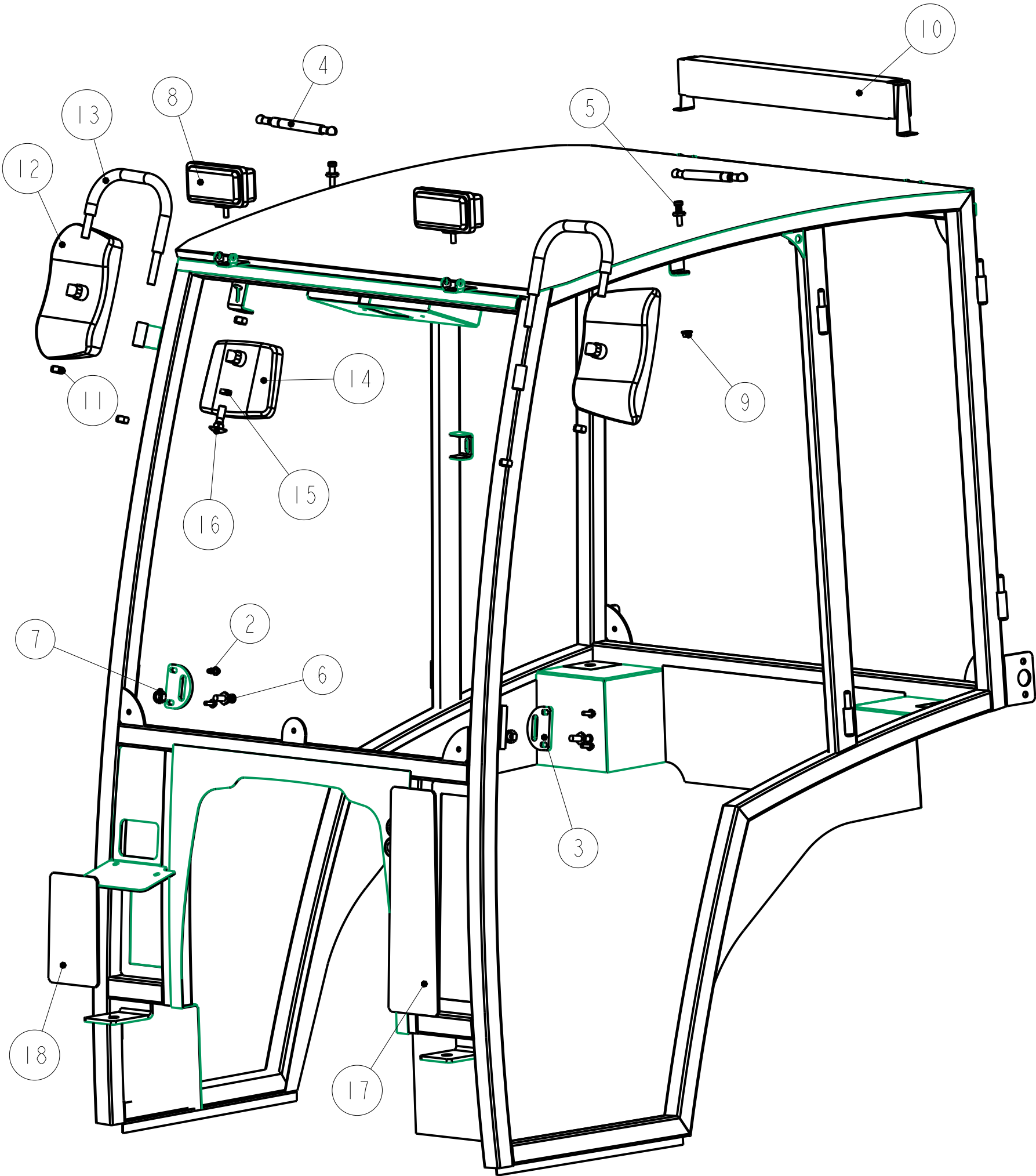
Notice of Confidentiality

This material is property of Tektite Manufacturing Inc and is not to be used by the recipient for any purpose other than the purpose for which it was transmitted. The material remains the property of Tektite and shall be returned upon request. The material may not be reproduced or disclosed to third parties without the written consent of Tektite.

Tolerances:
Unless otherwise specified
X.X = ±1/16"
Angular = ± 1.0°

Tektite Manufacturing Inc. 427 Buffalo Str, Box 639, Winkler MB, R6W 4A8, Canada			
Req'd:	CNC:	Description:	
1 req		Rear Window Assembly Breakdown	
Drawn By:	Date:	Units:	File Name:
Daryl Furkalo	2023-06-14	Imp.	MF1526-ASM-017_OP
Checked By:	Date:	Size:	
		B	M08-0016

Index	Service Part #	File Name	Description	Qty
1		MF1526-ASM-018		1
2	A00-0023	FLANGE_BOLT_1-4X3-4	Flange Bolt, 1/4" x 3/4", YD	4
3	A00-0061	TEKT-0021	Striker Mounting Plate	2
4	A00-0084	TEKT-0070	Gas Shock	2
5	A00-0085	TEKT-0069	Gas Shock Stud	2
6	A00-0101	STRIKER-PIN	Striker Pin	2
7	A00-0103	HEX-NUT-M12X1	Hex Nut, M12 x 1.0, YD	2
8	A00-0371	TEKT-0175	New LED Work Light (Blazer Intl)	2
9	A00-0413	FLANGE-NUT-5-16	Flange Nut, 5/16", YD	2
10	A00-0501	TEKT-0227	Upgrade Light Bar, Front/Rear	1
11	A00-0504	HEX-NUT-M12	Hex Nut, M12, Gr. 10.9, YD	5
12	A00-0519	TEKT-0244	Rectangular Mirror	2
13	A00-0520	TEKT-0243	Mirror Bracket Bar	2
14	A00-0535	TEKT-0249	Rectangular Interior Mirror	1
15	A00-0536	TEKT-0250	Spacer For Interior Mirror	1
16	A00-0537	CARRIAGE_BOLT_M12X40	Carriage Bolt, M12 x 40	1
17	M08-0005	MF1526-056	Lower LH Front Window	1
18	M08-0018	MF1526-057	Lower RH Front Window	1



Notice of Confidentiality

This material is property of Tektite Manufacturing Inc and is not to be used by the recipient for any purpose other than the purpose for which it was transmitted. The material remains the property of Tektite and shall be returned upon request. The material may not be reproduced or disclosed to third parties without the written consent of Tektite.

Tolerances:
Unless otherwise specified
X.X = ±1/16"
Angular = ± 1.0°

Tektite Manufacturing Inc.

427 Buffalo Str, Box 639, Winkler MB, R6W 4A8, Canada

Req'd:	CNC:	Description:	
1 req		Cab Assembly Parts	
Drawn By:	Date:	Units:	File Name:
Daryl Furkalo	2023-07-18	Imp.	MF1526-ASM-019
Checked By:	Date:	Size:	
		B	